

Appendix for Validating Migration Responses to Flooding Using Satellite and Vital Registration Data

By JOYCE J. CHEN, VALERIE MUELLER, YUANYUAN JIA, STEVEN KUO-HSIN TSENG

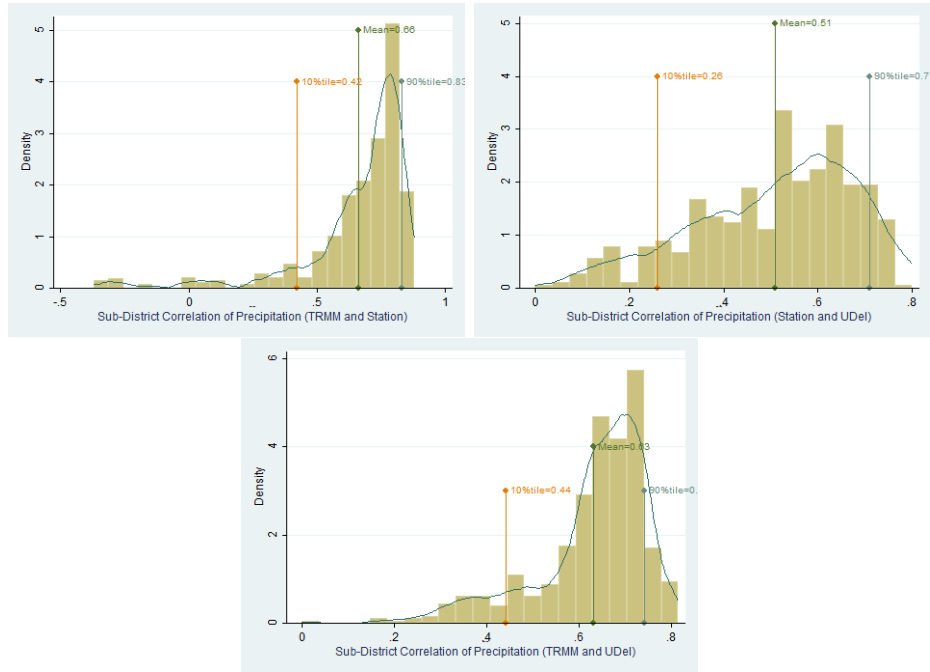


Figure 1. Epanechnikov Kernel Densities of Correlations between Data Products

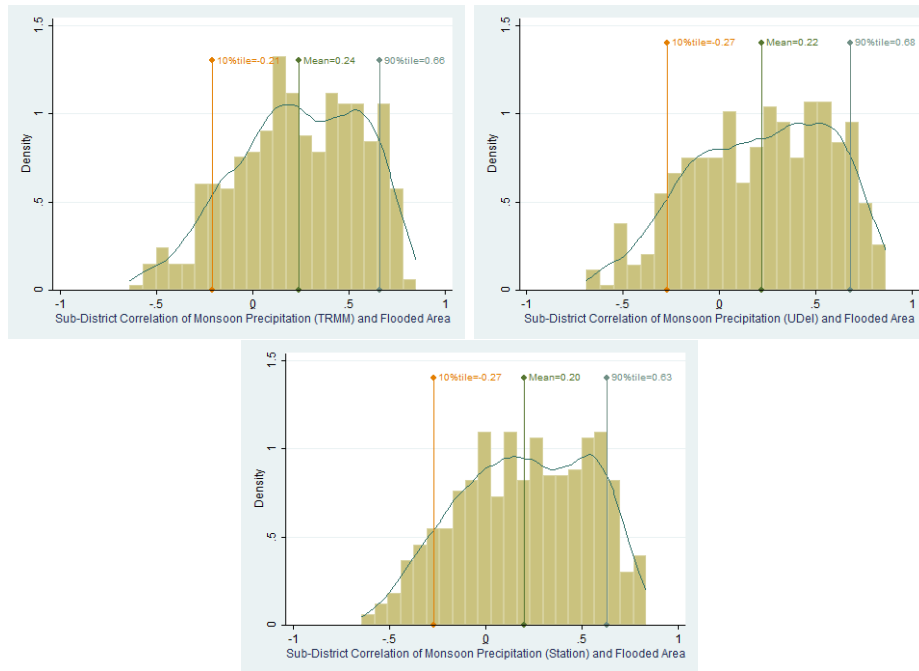


Figure 2. Epanechnikov Kernel Densities of Correlations between Monsoon Precipitation and Flood Measures

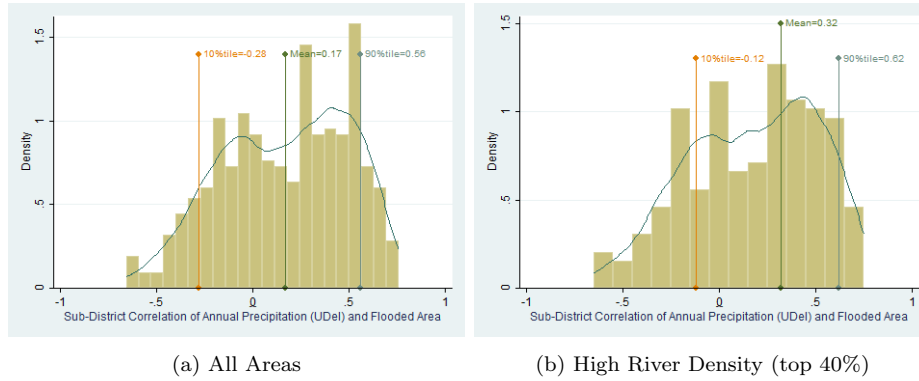


Figure 3. Epanechnikov Kernel Densities of Correlations between UDel Precipitation and Flood Measures

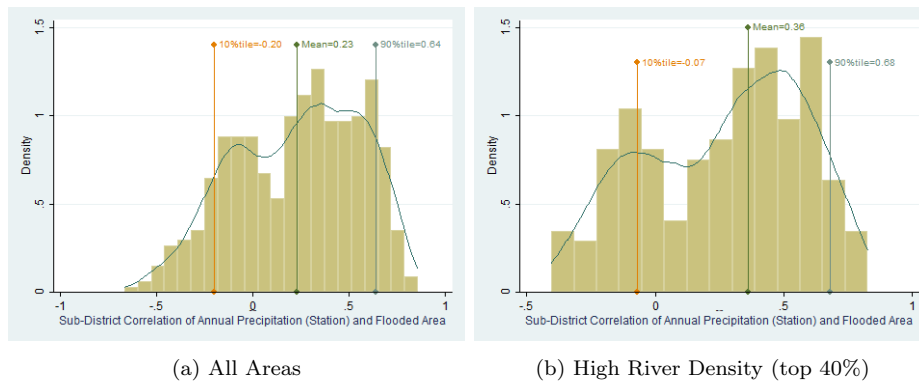


Figure 4. Epanechnikov Kernel Densities of Correlations between Station Precipitation and Flood Measures

Table 1—Summary Statistics

	Mean	Std.
Migration	0.05	0.22
Annual precipitation, station	2191.218	689.15
Annual precipitation, U. Del.	2073.026	1014.53
Annual precipitation, TRMM	2276.05	655.15
Flood	0.17	0.18
Degree days	5,874.80	216.58
30-year average degree days	5,713.01	151.92
30-year average precipitation	2,037.44	895.62
River density	0.17	0.096
Head is male	0.89	0.31
Head's age	45.22	13.76
Head is literate	0.50	0.50
Head is muslim	0.88	0.32
Head is hindu	0.10	0.30
No. of hh members	4.85	2.20
Male hh members 0-5 years old	0.31	0.56
Male hh members 6-16 years old	0.65	0.84
Male hh members 17-54 years old	1.25	0.87
Male hh members greater than 54 years old	0.23	0.43
Female hh members 0-5 years old	0.30	0.56
Female hh members 6-16 years old	0.61	0.83
Female hh members 17-54 years old	1.29	0.76
Female hh members greater than 54 years old	0.20	0.41
Primary water source comes from tap	0.08	0.28
Primary water source comes from well	0.90	0.30
Secondary water source comes from tap	0.09	0.28
Secondary water source comes from well	0.48	0.50
Has own water source	0.53	0.50
Has kerosene as source of light	0.46	0.50
Has electricity as source of light	0.53	0.50
Has kerosene as source of fuel	0.004	0.07
Has electricity as source of fuel	0.006	0.08
Has gas as source of fuel	0.09	0.29
Has modern or sanitary latrine	0.58	0.49

Note: N=1,931,954. U. Del.=University of Delaware.

Table 2—Out-Migration Rates

	Rural destination	Urban destination	Abroad
Rural origin	33.99	11.61	9.39
Urban origin	13.12	28.85	3.03