

Online Appendix to “The Economics of Rights: Does the Right to Counsel Increase Crime?”

Itai Ater
Tel-Aviv University

Yehonatan Givati
Hebrew University

Oren Rigbi
Ben-Gurion University

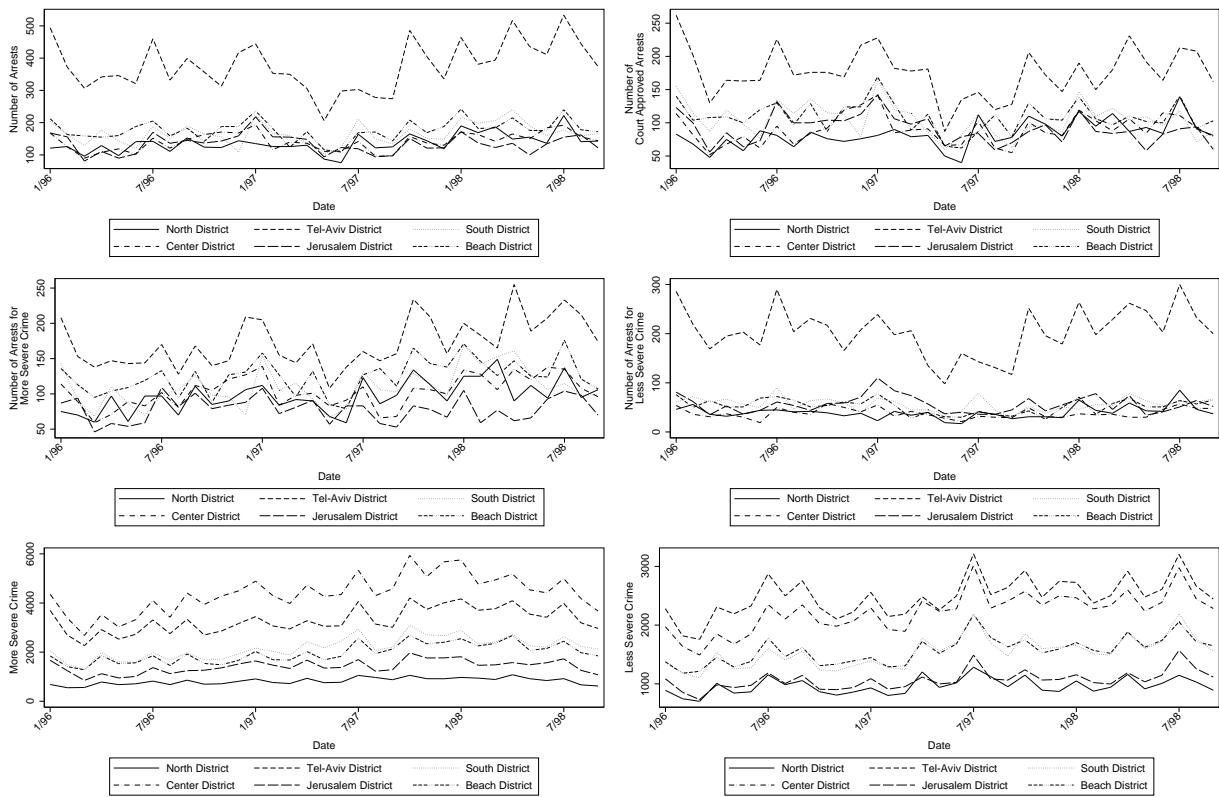
January 17, 2016

In this appendix we present the results of various checks referred to in the paper that demonstrate the robustness of the results and the graphical evidence. In tables 1 - 4 we present estimates of the parameter of interest (β) based on estimating Equation 1 in the paper. Figure 1 extends Figure 4 from the paper by including time series of various outcome variables.

The following robustness checks are presented -

1. Table 1 - including region demographic variables
2. Table 2 - weighting observations by regional population
3. Table 3 - normalizing outcome variables by region population
4. Table 4 - Defining more and less severe offenses as violent and non-violent offenses

Figure 1: Pre-reform Outcome Variables Regional Trends



Each figure presents the monthly value of the outcome variable for each region.

Table 1: Robustness to Including Regional Demographics

Dep. Variable:	log(arrest duration)				Share Not a Suspect		Share Charged	
	Court Approval		All arrests		All arrests		All arrests	
	(1)	(2)	(3)	(4)	(5)	(6)	(7)	(8)
Right to Counsel	-0.0484*** (0.00932)	-0.0507*** (0.00942)	-0.153*** (0.0275)	-0.164*** (0.0279)	0.0363** (0.0152)	-0.00977 (0.0105)	-0.0296*** (0.0109)	-0.0104 (0.00975)
Week/Region Fixed Effects	✓	✓	✓	✓	✓	✓	✓	✓
Region-specific Time Trend		✓		✓		✓		✓
Obs.	2,496	2,496	2,496	2,496	2,496	2,496	2,496	2,496
R^2	0.358	0.390	0.327	0.345	0.405	0.495	0.467	0.496

Dep. Variable:	log(number of arrests)							
	All arrests		Court Approved Arrests		More severe		Less severe	
	(9)	(10)	(11)	(12)	(13)	(14)	(15)	(16)
Right to Counsel	-0.0591*** (0.0209)	-0.0482** (0.0205)	-0.149*** (0.0278)	-0.143*** (0.0281)	-0.0347 (0.0260)	-0.0252 (0.0264)	-0.124*** (0.0416)	-0.116*** (0.0401)
Week/Region Fixed Effects	✓	✓	✓	✓	✓	✓	✓	✓
Region-specific Time Trend		✓		✓		✓		✓
Obs.	2,496	2,496	2,496	2,496	2,496	2,496	2,496	2,496
R^2	0.785	0.791	0.626	0.635	0.586	0.598	0.723	0.727

Dep. Variable:	log(number of arrests for less severe crimes)			
	Repeat Arrestee		New Arrestee	
	(17)	(18)	(19)	(20)
Right to Counsel	-0.0482 (0.0456)	-0.0138 (0.0453)	-0.0895** (0.0427)	-0.107** (0.0441)
Week/Region Fixed Effects	✓	✓	✓	✓
Region-specific Time Trend		✓		✓
Obs.	2,496	2,496	2,496	2,496
R^2	0.726	0.731	0.591	0.595

Dep. Variable:	log(crime)					
	All offenses		More severe		Less severe	
	(21)	(22)	(23)	(24)	(25)	(26)
Right to Counsel	0.0351** (0.0136)	0.0576*** (0.0101)	0.00383 (0.0166)	0.0313** (0.0125)	0.0906*** (0.0132)	0.109*** (0.0111)
Week/Region Fixed Effects	✓	✓	✓	3 ✓	✓	✓
Region-specific Time Trend		✓		✓		✓
Obs.	2,496	2,496	2,496	2,496	2,496	2,496
R^2	0.967	0.983	0.963	0.980	0.950	0.965

*** $p < 0.01$, ** $p < 0.05$, * $p < 0.1$

Table 2: Robustness to Weighting Observations by Regional Population

Dep. Variable:	log(arrest duration)				Share Not a Suspect		Share Charged	
	Court Approval		All arrests		All arrests		All arrests	
	(1)	(2)	(3)	(4)	(5)	(6)	(7)	(8)
Right to Counsel	-0.0476*** (0.00936)	-0.0479*** (0.00944)	-0.155*** (0.0283)	-0.162*** (0.0285)	0.0329** (0.0143)	-0.00590 (0.0103)	-0.0246** (0.0107)	-0.0110 (0.0100)
Week/Region Fixed Effects	✓	✓	✓	✓	✓	✓	✓	✓
Region-specific Time Trend		✓		✓		✓		✓
Obs.	2,496	2,496	2,496	2,496	2,496	2,496	2,496	2,496
R^2	0.339	0.383	0.326	0.356	0.392	0.478	0.464	0.513

Dep. Variable:	log(number of arrests)							
	All arrests		Court Approved Arrests		More severe		Less severe	
	(9)	(10)	(11)	(12)	(13)	(14)	(15)	(16)
Right to Counsel	-0.0664*** (0.0209)	-0.0558*** (0.0210)	-0.156*** (0.0280)	-0.146*** (0.0289)	-0.0495* (0.0263)	-0.0417 (0.0268)	-0.113*** (0.0411)	-0.106*** (0.0404)
Week/Region Fixed Effects	✓	✓	✓	✓	✓	✓	✓	✓
Region-specific Time Trend		✓		✓		✓		✓
Obs.	2,496	2,496	2,496	2,496	2,496	2,496	2,496	2,496
R^2	0.802	0.807	0.640	0.648	0.600	0.612	0.743	0.750

Dep. Variable:	log(number of arrests for less severe crimes)			
	Repeat Arrestee		New Arrestee	
	(17)	(18)	(19)	(20)
Right to Counsel	-0.0197 (0.0440)	0.000696 (0.0440)	-0.0805* (0.0436)	-0.0857* (0.0449)
Week/Region Fixed Effects	✓	✓	✓	✓
Region-specific Time Trend		✓		✓
Obs.	2,496	2,496	2,496	2,496
R^2	0.744	0.753	0.616	0.619

Dep. Variable:	log(crime)					
	All offenses		More severe		Less severe	
	(21)	(22)	(23)	(24)	(25)	(26)
Right to Counsel	0.0307** (0.0127)	0.0527*** (0.0104)	-0.000361 (0.0154)	0.0254** (0.0126)	0.0896*** (0.0131)	0.110*** (0.0117)
Week/Region Fixed Effects	✓	✓	✓	4 ✓	✓	✓
Region-specific Time Trend		✓		✓		✓
Obs.	2,496	2,496	2,496	2,496	2,496	2,496
R^2	0.971	0.985	0.967	0.983	0.953	0.966

*** $p < 0.01$, ** $p < 0.05$, * $p < 0.1$

Table 3: Robustness to Normalizing Outcomes by the Regional Population

Dep. Variable:	log(number of arrests)							
	All arrests		Court Approved Arrests		More severe		Less severe	
	(1)	(2)	(3)	(4)	(7)	(8)	(9)	(10)
Right to Consel	-0.0637*** (0.0209)	-0.0475** (0.0206)	-0.163*** (0.0279)	-0.142*** (0.0283)	-0.0377 (0.0261)	-0.0256 (0.0263)	-0.126*** (0.0408)	-0.113*** (0.0401)
Week/Region Fixed Effects	✓	✓	✓	✓	✓	✓	✓	✓
Region-specific Time Trend		✓		✓		✓		✓
Obs.	2,496	2,496	2,496	2,496	2,496	2,496	2,496	2,496
R^2	0.807	0.813	0.672	0.687	0.649	0.664	0.729	0.736

Dep. Variable:	log(number of arrests for less severe crimes)			
	Repeat Arrestee		New Arrestee	
	(11)	(12)	(13)	(14)
Right to Counsel	-0.0501 (0.0449)	-0.0212 (0.0449)	-0.103** (0.0423)	-0.0991** (0.0438)
Week/Region Fixed Effects	✓	✓	✓	✓
Region-specific Time Trend		✓		✓
Obs.	2,496	2,496	2,496	2,496
R^2	0.729	0.739	0.615	0.618

Dep. Variable:	log(crime)					
	All offenses		More severe		Less severe	
	(15)	(16)	(17)	(18)	(19)	(20)
Right to Consel	0.0263* (0.0142)	0.0604*** (0.0102)	-0.00569 (0.0173)	0.0335*** (0.0126)	0.0825*** (0.0135)	0.113*** (0.0112)
Week/Region Fixed Effects	✓	✓	✓	✓	✓	✓
Region-specific Time Trend		✓		✓		✓
Obs.	2,496	2,496	2,496	2,496	2,496	2,496
R^2	0.948	0.979	0.944	0.976	0.931	0.953

*** $p < 0.01$, ** $p < 0.05$, * $p < 0.1$

The table presents estimates of the parameter β from estimating Equation 1 using the number of arrests and reported crime as the outcome variables. Each of the outcome variables is normalized by the corresponding regional population.

Table 4: Robustness to Defining More and Less Severe Offenses as Violent and Non-Violent Offenses

Dep. Variable:	log(number of arrests)				log(crime)			
	Violent		Non-Violent		Violent		Non-Violent	
	(1)	(2)	(3)	(4)	(5)	(6)	(7)	(8)
Right to Counsel	-0.000520 (0.0558)	-0.0231 (0.0596)	-0.0634*** (0.0220)	-0.0514** (0.0220)	0.0249 (0.0313)	0.0586** (0.0296)	0.0328** (0.0132)	0.0591*** (0.0103)
Week/Region Fixed Effects	✓	✓	✓	✓	✓	✓	✓	✓
Region-specific Time Trend		✓		✓		✓		✓
Obs.	2,496	2,496	2,496	2,496	2,496	2,496	2,496	2,496
R^2	0.344	0.351	0.773	0.777	0.735	0.765	0.965	0.983

*** $p < 0.01$, ** $p < 0.05$, * $p < 0.1$

The table presents estimates of the parameter β from estimating Equation 1 using the number of arrests and crime as the dependent variables for violent and non-violent offenses.