

Term Structure of Interest Rates with Short-Run and Long-Run Risks*

Olesya V. Grishchenko[†] Zhaogang Song[‡] Hao Zhou[§]

December 2016

Abstract

Interest rate variance risk premium (IRVRP), the difference between implied and realized variances of interest rates, emerges as a strong predictor of Treasury bond returns of maturities ranging between one and ten years for return horizons up to six months. IRVRP is not subsumed by other predictors such as forward rate spread or equity variance risk premium. These results are robust in a number of dimensions. We rationalize our findings within a consumption-based model with long-run risk, economic uncertainty, and inflation non-neutrality. In the model interest rate variance risk premium is related to short-run risk only, while standard forward-rate-based factors are associated with both short-run and long-run risks in the economy. Our model qualitatively replicates the predictability pattern of IRVRP for bond returns.

JEL Classification: G12, G13, G14

Keywords: Interest rate variance risk premium, bond return predictability, term structure

_____ of interest rates, interest rate derivatives, long-run risk, economic uncertainty

*We are grateful to seminar participants at Penn State University, Monetary and Financial Market Analysis Section at the Federal Reserve Board, Luxembourg School of Finance, European Investment Bank, and Banque de France as well as conference participants at the 6th Risk Management Conference in Mont-Tremblant, Canada, 2014 Midwest Finance Association Meetings, 2014 Annual Missouri Economics Conference, 2014 Darla Moore School of Business Fixed Income Conference, 2014 CEPR Asset Pricing Workshop at Gerzensee, 2015 International Conference of the French Finance Association, 2016 Finance Down Under Conference, 2016 Society for Financial Econometrics (SoFiE) Annual Meeting in Hong Kong (Keynote Speech), 2016 SFS Cavalcade, and the 3d SAFE Asset pricing Workshop (2016) at the University of Goethe for useful comments. We thank Dobri Dobrev, Antonio Gargano, Alex Hsu, Dana Kiku, Don Kim, Canlin Li, Jeremy Stein, Julian Thimme, Min Wei, and Ram Yamarthi for helpful discussions. The opinions expressed in this paper are those of the authors and do not necessarily reflect those of others in the Federal Reserve System.

[†]Division of Monetary Affairs, Federal Reserve Board, Washington, DC 20551; Olesya.V.Grishchenko@frb.gov

[‡]Carey School of Business, John Hopkins University 100 International Drive, Baltimore, MD 21202; jsong8@jhu.edu

[§]PBC School of Finance, Tsinghua University, 43 Chengfu Road, Haidian District, Beijing, 100083, P. R. China; zhouh@pbcfsf.tsinghua.edu.cn

Term Structure of Interest Rates with Short-Run and Long-Run Risks

Abstract

Interest rate variance risk premium (IRVRP), the difference between implied and realized variances of interest rates, emerges as a strong predictor of Treasury bond returns of maturities ranging between one and ten years for return horizons up to six months. IRVRP is not subsumed by other predictors such as forward rate spread or equity variance risk premium. These results are robust in a number of dimensions, such as in various subsamples, with additional return predictors, and with alternative data sets for Treasury bond returns. We rationalize our findings within a consumption-based model with long-run risk, economic uncertainty, and inflation non-neutrality. In the model interest rate variance risk premium is related to short-run risk only, while standard forward-rate-based factors are associated with both short-run and long-run risks in the economy. Our model qualitatively replicates the predictability pattern of IRVRP for bond returns.

JEL Classification: G12, G13, G14

Keywords: Interest rate variance risk premium, bond return predictability, term structure of interest rates, interest rate derivatives, long-run risk, economic uncertainty

1 Introduction

The failure of the expectations hypothesis first documented by [Fama and Bliss \(1987\)](#) and [Campbell and Shiller \(1991b\)](#) has attracted enormous attention in the asset pricing literature over the past decades. Various plausible risk factors that appear to capture bond return predictability—forward spread ([Fama and Bliss, 1987](#)), forward rates factor ([Cochrane and Piazzesi, 2005](#)), jump risk measure ([Wright and Zhou, 2009](#)), hidden term structure factor ([Duffee, 2011](#)), and macroeconomic factor(s) ([Ludvigson and Ng, 2009](#); [Huang and Shi, 2012](#)), among many others—have been proposed. Despite this impressive progress, the fundamental challenge for uncovering a particular economic mechanism behind bond return variation still remains. Understanding such an economic mechanism is equally important for market participants as well as for monetary policy makers. Our paper focuses on (a) finding a robust empirical factor that would capture bond return variation across maturities and for different horizons and (b) rationalizing the this empirical factor within a consumption-based long-run risk model.

Our main empirical findings exploit the informational content of the interest-rate variance risk premium (IRVRP) constructed from the U.S. interest rate swaps and swaptions markets. The interest-rate derivatives markets represent the largest segment of the U.S. fixed-income market because interest-rate derivatives represent an important tool for corporate treasurers, asset managers, and public institutions to hedge interest rate risk.¹ According to the Bank of International Settlements, as of June 2012, the outstanding notional value of interest rate swaps and swaptions exceeded \$379 and \$50 trillion, respectively, on a net basis. This outstanding notional value combined together is much larger than the \$52 trillion of all exchange-traded interest rate futures and options, such as Treasury futures and futures options traded on Chicago Mercantile Exchange. In addition, a 2009 survey by the International Swaps and Derivatives Association reports that 88.3% of the Fortune Global 500 companies use swaps and swaptions for hedging interest rate risk. Last but not least, [Dai and Singleton \(2000\)](#) pointed to similarities between the U.S. Treasury yields,

¹Interest rate swaps play a central role in the whole financial system as swap rates reflect term financing rates of major financial institutions. In fact, the floating leg of a plain vanilla swap is usually tied to the 3-month LIBOR, which serves as a benchmark rate for corporate treasurers, mortgage lenders, and credit card agencies.

swap rates, and swaption prices. Thus, it appears likely that the interest-rate derivatives markets can be informative for explaining variation in Treasury yields.

Our first empirical finding connects the variation in the relatively short-horizon (one- to six-month) bond risk premiums to variation in the *interest-rate variance risk premium*, the factor that we term IRVRP, which is the difference between the risk-neutral and objective expectations of variation in interest rates. IRVRP always loads positively on Treasury excess returns in the data, and high (low) values of IRVRP are associated with subsequent high (low) Treasury excess returns. Depending on the return horizon and maturity of Treasury securities, IRVRP alone explains a nontrivial share of the variation in bond returns. Thus, for one-month holding period return and intermediate maturities (2 to 5 years) IRVRP explains from 75 to 56 percent of variation, respectively, for three-month holding period return and the same maturities it explains 62 to 28 percent of variation, and for six-month holding period return and the same maturities it explains 38 to 10 percent of variation. For longer maturities (6 to 10 years), IRVRP still explains a considerable, albeit smaller, amount of variation, than for intermediate maturities. For one-, three-, and six-month returns for longer maturities, it explains 50 to 32, 23 to 13, and 8 to 5 percent of variation, respectively. IRVRP is also significant for longest maturities (15 and 20 year) in our sample and for one- and three-month returns, but not for six-month returns. IRVRP is not significant for any maturities at one-year horizons. So sum up, IRVPR appears to capture relatively *short-run* variation in Treasury excess returns across entire term structure, that is, its informational and predictive content is most important for relatively short holding periods of Treasury securities.

Our second empirical result is that equity variance risk premium (EVRP), a robust predictor for equity excess returns ([Bollerslev, Tauchen, and Zhou, 2009](#)) does not explain well variation of Treasury excess returns, although its predictive content for Treasury excess returns increases slightly with maturity of Treasury securities.

Our third empirical finding is that forward spread (FS), a classical predictor of Treasury excess returns, also explains a nontrivial share of bond return variation. However, corresponding R^2

statistics are much lower than those implied by IRVRP regressions. In addition, FS-implied R^2 's increase with maturity with most explanatory power concentrated at maturities of 3 to 5 years.

Figure 2 is the main figure in our paper that illustrates these empirical findings. To summarize, IRVRP tends to capture variation in bond returns at shorter horizons, thus we associate IRVRP with the *short-run risks*, while EVRP and FS appear to capture variation of bond returns at longer horizons, thus, we associate these factors with *long-run risks*. We also find that neither EVRP, nor FS subsume significance and predictive power of the IRVRP. So, the informational content of IRVRP appears to go beyond standard predictors for equity and bond returns.

We also run a number of robustness checks. First, we perform a subsample analysis to verify that our results are not driven by short turbulent periods in the financial markets, such as financial crisis of 2008-2009. Second, we control for additional bond return predictors, such as [Cochrane and Piazzesi \(2005\)](#) factor as well as two macro factors including economic growth, expected inflation, as well as [Ludvigson and Ng \(2009\)](#) macro principal component factors. Lastly, we also consider an alternative data set of Treasury bond portfolios. None of these modifications of our empirical analysis materially change our results.

To rationalize our empirical findings, we propose a stylized general equilibrium model as an extension of long-run risk models in [Bansal and Yaron \(2004, BY\)](#) and short-run risk models in [Bollerslev, Tauchen, and Zhou \(2009, BTZ\)](#). [Bansal and Yaron \(2004\)](#) emphasize importance of the long-run risk in consumption growth for explaining the equity premium, while [Bollerslev, Tauchen, and Zhou \(2009\)](#) show that richer volatility dynamics in consumption growth can be successful in capturing short-horizon stock return predictability. Our model includes both long-run risk and certain nontrivial volatility dynamics in consumption growth. It generates a two-factor volatility structure for the endogenously determined bond risk premium, in which the factors are explicitly related to the underlying volatility dynamics of consumption growth where different volatility concepts load differently on the fundamental risk factors and capture separately short-run and long-run risks of Treasury excess returns. In particular, IRVRP effectively isolates the *short-run* risk factor associated with the volatility-of-volatility of consumption growth. The *long-run* risk

factor associated with volatility of consumption growth appears to be captured by [Fama and Bliss \(1987\)](#) forward spread.

Finally, our calibration exercise suggests that the model fits remarkably well the upward-sloping nominal yield curve. The key two ingredients in fitting the nominal yield curve are the presence of the long-run risk in the model and inflation non-neutrality. As such, the long-run risk state variable from the real side of the model affects nominal prices via inflation channel. We reasonably calibrate inflation process ([Zhou, 2011](#)), while leaving the real side model parameters similar to the ones in BY and BTZ. The most important feature of the inflation process is the negative correlation with consumption volatility shock, consistent with recent empirical findings ([Piazzesi and Shneider, 2007](#); [Campbell, Sunderam, and Viceira, 2013](#); [Bansal and Shaliastovich, 2013](#)). Without this feature, the nominal yield curve is downward-sloping.

The idea of economic uncertainty as a potential risk factor has gained attention recently, both for explaining variation in stock returns ([Bollerslev, Tauchen, and Zhou, 2009](#); [Bloom, 2009](#); [Drechsler, 2013](#)) and in bond returns ([Wright, 2011](#); [Bansal and Shaliastovich, 2013](#); [Giacoletti, Laursen, and Singleton, 2015](#)). The last two papers are especially relevant to our study. [Bansal and Shaliastovich \(2013\)](#) link bond excess return variation to variation in volatility of real activity and inflation—variables they interpret as uncertainty, although they do not explicitly model the uncertainty process. [Giacoletti, Laursen, and Singleton \(2015\)](#) find that dispersion of beliefs about future interest rates — interpreted as investors’ uncertainty about interest rates—is distinct from information about the macroeconomy and can be useful in explaining variation in bond returns.

While bond pricing empirical literature (see, [Fama and Bliss, 1987](#); [Campbell and Shiller, 1991b](#), among numerous studies) has documented predictability of long-horizon bond returns, bond predictability in the short run did not receive much attention until very recently ([Fama, 1984](#); [Stambaugh, 1988](#); [Zhou, 2009](#)). A growing literature argues for the existence of the short-run and long-run risk components of the aggregate volatility to study the variation of stock returns (see, [Adrian and Rosenberg, 2008](#); [Christoffersen, Jacobs, Ornathanalai, and Wang, 2008](#); [Branger, Rodrigues, and Schlag, 2011](#); [Zhou and Zhu, 2012, 2013](#), among others). A recent paper by

[Ghysels, Le, Park, and Zhu \(2014\)](#) emphasizes a short-run volatility component of bond yields as a useful predictor for future excess returns, as opposed to a long-run volatility component that has no predictive power.

To the best of our knowledge, our paper is the first one that explores short-horizon bond return predictability and explains the empirical findings within a consumption-based structural framework of two-factor volatility dynamics. While the volatility-of-volatility of consumption growth (short-run risk factor) seems to drive the variation in the short-horizon Treasury excess returns, the variation in long-horizon returns appears to be mainly driven by a different kind, possibly a longer-run risk factor of consumption growth. The long-run risk factor with money-non-neutrality is also important for matching the term structure of nominal interest rates.

The rest of the paper is organized as follows. [Section 2](#) describes all relevant data to our empirical exercise and methodology of constructing IRVRP, [Section 3](#) presents our empirical results and robustness checks, [Section 4](#) presents our long-run risk model with two different volatility factors and inflation non-neutrality, and derives asset pricing implications of the model, [Section 5](#) discusses calibration of the U.S. Treasury yield curve implied by our model, and [Section 6](#) concludes.

2 Data and Our Measures

2.1 Measure of Interest Rate Variance Risk Premium

2.1.1 Methodology

We measure the interest rate variance risk premium as the difference between the market's expectation of the interest rate variation under the risk-neutral measure and that under the physical measure. To capture the risk-neutral expectation, we employ a model-free approach and construct an implied variance measure of swap rates using interest rate swaptions, similar to [Bollerslev, Tauchen, and Zhou \(2009\)](#) and [Carr and Wu \(2009\)](#) in measuring equity variance risk premium using equity options. Specifically, let $D(t, T_m)$ be the time- t price of a zero-coupon bond maturing

at time T_m , and $S_{m,n}(t)$ be the time- t forward swap rate, i.e., the rate for a fixed versus floating interest rate swap contract with a start date T_m and maturity date T_n . The forward swap rate becomes the spot swap rate $S_{m,n}(T_m)$ at time $t = T_m$.

A swaption gives its holder the right but not the obligation to enter into an interest rate swap either as a fixed leg (payer swaption) or as a floating leg (receiver swaption) with a pre-specified fixed coupon rate. In particular, let T_m be the expiration date of the swaption, K be the coupon rate on the swap, and T_n be the final maturity date of the swap. The payer swaption allows the holder to enter into a swap at time T_m with a remaining term of $T_n - T_m$ and to pay the fixed annuity of K . At time t , this swaption is usually called a $(T_m - t)$ into $(T_n - T_m)$ payer swaption, also known as a $(T_m - t)$ by $(T_n - T_m)$ payer swaption, where $(T_m - t)$ is the option maturity and $(T_n - T_m)$ is the tenor of the underlying swap. Equivalently, the payer (receiver) swaption allows the holder to receive (pay) periodic coupon payments according to the floating influential interest rates. Hence, the payer (receive) swaption is effectively a call (put) option on the interest rate. By analogy to equity options, payer swaptions contain valuable information on the upside movements of interest rates, whereas receiver swaptions are about downside. The difference from equity options is that the underlying security of a swaption is a forward interest rate swap contract that has a maturity $(T_n - T_m)$, but the underlying of equity index option – the S&P 500 index – has an infinite maturity.

Let $\mathcal{P}_{m,n}(t; K)$ and $\mathcal{R}_{m,n}(t; K)$ denote the time- t value of a European payer and receiver swaption, respectively, expiring at T_m with strike K on a forward start swap for the time period between T_m and T_n . As shown by [Li and Song \(2014\)](#) and [Mele and Obayashi \(2012\)](#) extending the algorithm used by CBOE in constructing VIX to interest rate swaps, the markets risk-neutral expectation of the interest rate variation over $[t, T_m]$ can be computed as the following “model-free” portfolio of swaptions:

$$\mathbb{V}_{m,n}(t) \equiv \frac{2}{A_{m,n}(t)} \left\{ \int_{K > S_{m,n}(t)} \frac{1}{K^2} \mathcal{P}_{m,n}(t; K) dK + \int_{K < S_{m,n}(t)} \frac{1}{K^2} \mathcal{R}_{m,n}(t; K) dK \right\}, \quad (1)$$

where $A_{m,n}(t) \equiv \sum_{j=m+1}^n D(t, T_j)$ is the present value of an annuity associated with the fixed leg of the forward swap contract.²

In order to quantify the variation of interest rates under the physical measure, we follow [Bollerslev, Tauchen, and Zhou \(2009\)](#) to use the realized variance measure. Specifically, let $s_{m,n}(t)$ be the logarithm of the forward swap rate $S_{m,n}(t)$. The realized variation over the comparable to the $\mathbb{IV}_{m,n}(t)$ discrete-time interval $[t - (T_m - t), t]$ can then be measured in a “model-free” way as follows:

$$\mathbb{RV}_{m,n}(t) = \frac{1}{T_m - t} \sum_{i=1}^M \left[s_{m,n} \left(t - (T_m - t) + \frac{i}{M}(T_m - t) \right) - s_{m,n} \left(t - (T_m - t) + \frac{i-1}{M}(T_m - t) \right) \right]^2, \quad (2)$$

which will converge to the quadratic variation of $s_{m,n}$ over the interval $[t - (T_m - t), t]$ as $M \rightarrow \infty$, that is, on an increasing number of within-the-period observations (see [Carr and Madan \(2001\)](#), [Barndorff-Nielsen and Shephard \(2004\)](#), [Hansen and Lunde \(2006\)](#), and so on).

The interest rate variance risk premium measure is then computed as the difference between the market’s risk-neutral and physical expectations of the swap rate variation over $[t, T_m]$, proxied by $\mathbb{IV}_{m,n}(t)$ and $\mathbb{RV}_{m,n}(t)$, respectively:

$$\text{IRVRP}_{m,n}(t) \equiv \mathbb{IV}_{m,n}(t) - \mathbb{RV}_{m,n}(t). \quad (3)$$

2.1.2 Swaptions Data and Estimates

To construct the implied variance measure $\mathbb{IV}_{m,n}(t)$, we combine monthly (end-of-month) observations of (European) swaption prices from J.P. Morgan and Barclays Capital, two of the largest inter-dealer brokers in interest rate derivatives markets.³ The swaption prices from J.P. Morgan are available from March 1993 with five strikes, namely, at-the-money-forward (ATMF), $\text{ATMF} \pm$

²To be precise, this calculates the market’s expectation of the swap rate variation over $[t, T_m]$ under the so-called annuity measure $\mathbb{A}^{m,n}$, which is an equivalent probability measure to the risk-neutral measure \mathbb{Q} such that $\frac{d\mathbb{A}^{m,n}}{d\mathbb{Q}} = e^{-\int_t^{T_m} r(s)ds} \frac{A_{m,n}(T_m)}{A_{m,n}(t)}$.

³Market participants quote the swaption prices using both the log-normal implied volatility of [Black \(1976\)](#) and the normalized (absolute or basis point) implied volatility of a pricing formula based on normal distribution.

100, and ATMF ± 50 basis points. The swaption prices from Barclays are available from January 2005 with thirteen strikes, namely, ATMF, ATMF ± 200 , ATMF ± 150 , ATMF ± 100 , ATMF ± 75 , ATMF ± 50 , and ATMF ± 25 basis points. In our empirical analysis, we use swaption prices from J.P. Morgan from March 1993 through December 2004 and those from Barclays from January 2005 to February 2013. to obtain the maximum sample coverage.⁴ Moreover, we use 12-month swaptions on multiple tenors, including 1, 2, 5, 10, and 20 years, which are likely to eliminate idiosyncratic movements associated with one single tenor and help capture the common dynamics of the market volatility risk.

To compute $A_{m,n}(t)$ that is needed to compute the implied variance measure (see equation (1)), we obtain LIBOR rates with maturities of 3, 6, 9, and 12 months, as well as 2-, 3-, 4-, 5-, 7-, 10-, 15-, 20-, 25-, and 30-year spot swap rates over our sample period, from J.P. Morgan and Barclays. We use a standard bootstrap procedure to obtain zero-coupon curves from the swap rates, and then compute $A_{m,n}(t)$.⁵ We also compute the forward swap rates $S_{m,n}(t)$ based on these bootstrapped zero-coupon curves.

We approximate the integral involved in equation (1) by a discrete sum, a standard practice in the literature (Carr and Wu (2009); Bollerslev, Tauchen, and Zhou (2009); Gao, Gao, and Song (2015)). To obtain prices of payer swaption $\mathcal{P}_{m,n}(t; K)$ and receiver swaption $\mathcal{R}_{m,n}(t; K)$ on a dense set of strikes for the accuracy of the approximation, we follow the literature to interpolate implied volatilities across the range of observed strikes and use implied volatility of the lowest (highest) available strike to replace those of the strikes below (above). Specifically, we generate 200 implied volatility points that are equally spaced over a strike range with moneyness between $0.9 \times S_{m,n}(t)$ and $1.1 \times S_{m,n}(t)$, where $S_{m,n}(t)$ is the current forward swap rate on each day. This implied volatility/strike grid together with $A_{m,n}(t)$ and forward swap rates allows us to compute the empirical counterpart of the implied variance $\mathbb{IV}_{m,n}(t)$ in equation (1).

We then construct the realized variance $\mathbb{RV}_{m,n}(t)$ in (2) using daily series of 12-month forward

⁴All our empirical results remain little changed should we only use the J.P. Morgan swaption data.

⁵We first use a standard cubic spline algorithm to interpolate the swap rates at semiannual intervals from one year to 30 years. We then solve for the zero curve by bootstrapping the interpolated par curve with swap rates as par bond yields. The day count convention is 30/360 for the fixed leg, and Actual/360 for the floating leg.

swap rates on 1-, 2-, 5-, 10-, and 20-year tenors, with $M = 22$ (We use high-frequency intraday series of swap rates for robustness checks in [subsection 3.4](#)). We take the difference between the implied and realized variance measures to compute the interest rate variance risk premium measure $\text{IRVRP}_{m,n}(t)$, according to equation (3), for each of the five tenors $n=1, 2, 5, 10,$ and 20 years.⁶ To obtain the market-level measure of interest rate variance risk premium, we then use the simple average of the five individual measures:

$$\text{IRVRP}_t = \sum_{n=1,2,5,10,20} \text{IRVRP}_{m,n}(t)/5, \quad (4)$$

where $m=12$ months.

Panel A of [Table 1](#) reports summary statistics of IRVRP. We observe that IRVRP seems to be quite persistent with an AR(1) coefficient of 0.97. The top panel of [Figure 1](#) plots monthly series of the interest-rate variance risk premium measure IRVRP_t . We observe that IRVRP increased dramatically around 2002 and during the recent financial crisis. In addition, IRVRP also increased notably amid the European financial crisis in the second half of 2011.

2.2 Asset Returns

To compute Treasury bond returns, we use the zero-coupon Treasury yield data of [Gürkaynak, Sack, and Wright \(2007\)](#) with 2-, 3-, 4-, 5-, 6-, 7-, 8-, 9-, 10-, 15-, and 20-year maturities from March 1993 to February 2013. Specifically, let $p_t^{(\tau)}$ be the log price of a τ -year zero-coupon Treasury security at time t . Its h -period log return is

$$r_{t+h}^{(\tau)} = p_{t+h}^{(\tau-h)} - p_t^{(\tau)}, \quad (5)$$

⁶Note that such estimates essentially use the lagged time- t realized variance to proxy for the physical expectation of the future realized variance over $[t, T_m]$. Alternatively, we follow the literature to use the forecasting model *heterogeneous autoregressive volatility model of realized volatility* (HAR-RV) of [Andersen, Bollerslev, and Diebold \(2007\)](#) and [Corsi \(2009\)](#) in computing the physical expectation of the future realized variance (see [Andersen, Bollerslev, Christoffersen, and Diebold \(2006\)](#)) and [Bollerslev, Tauchen, and Zhou \(2009\)](#) for more discussions). Results using these alternative estimates are similar.

where $h = 1, 3, 6$, and 12 months. The corresponding excess returns are

$$rx_{t+h}^{(\tau)} = r_{t+h}^{(\tau)} - y_t^{(h)}, \quad (6)$$

where $y_t^{(h)}$ is the h -period zero-coupon rate at time t . Furthermore, we use the continuously compounded returns on the S&P 500 index at the monthly frequency, including dividends, from Center for Research in Security Press (CRSP), as equity market returns.

Summary statistics of annualized excess returns (in percentage points) of the Treasury securities and equity market are presented in Panel B of [Table 1](#). We observe that (time-series) average excess returns increase with the tenor of the underlying security for all four different holding horizons. Holding the tenor fixed, the average excess returns also increase monotonically with the holding horizon. In particular, average excess returns of Treasuries are mostly negative up to the 6-month holding horizon, and turn positive for the 12-month holding horizon. Moreover, the autocorrelation of the excess returns series is higher for shorter tenors and longer holding horizons, though being low for long-tenor assets including the Treasuries of longer than 10 years and equity market at the 1-month holding horizon.

2.3 Additional Return Predictors

In our empirical analysis, we compare our interest rate variance risk premium mainly with two established return predictors in the literature, the equity variance risk premium of [Bollerslev, Tauchen, and Zhou \(2009\)](#) and the forward spread of [Fama and Bliss \(1987\)](#). The equity variance risk premium is also constructed as the difference between option-implied variance and realized variance, and hence may capture a similar fashion of volatility risk as our interest rate variance risk premium. It is thus important to investigate if the IRVRP is associated with a distinctive channel of volatility risk and possess different return predictive power. The forward spread is considered because our interest rate variance risk premium is constructed using derivative prices on interest rates, and hence it is important to study whether the IRVRP only captures information that is

already in the yield curve.

The bottom panel of [Figure 1](#) plots monthly series of the equity variance risk premium measure, and panel A of [Table 1](#) reports its summary statistics. We observe that the equity variance risk premium spikes around 1998, and reaches a deeply negative value in 2008. Moreover, it is much less persistent, with the AR(1) coefficient about 0.23. In sum, the interest rate and equity variance risk premium seems to exhibit distinctive dynamics.

Panel A of [Table 1](#) also reports the summary statistics of the forward spreads, defined as the difference between one-year forward rate τ (2, 3, 4, 5, 6, 7, 8, 9, 10, 15, and 20) years ahead and the one-year zero coupon yield, using the Treasury yield data of [Gürkaynak, Sack, and Wright \(2007\)](#). We observe that the forward spread increases with the tenor τ , and is mostly as persistent as the interest rate variance risk premium, with AR(1) coefficients between 0.92 and 0.97.

In addition to the interest rate and equity variance risk premium as well as the forward spreads, we also consider two sets of bond and equity return predictors, respectively, as additional controls. For bond returns, we include the economic growth measured by the three-month moving average of the Chicago Fed National Activity Index and the expected inflation measured by the forecast consensus of future inflation from Blue Chip Financial Forecasts. These two macro variables have been shown to drive the term structure dynamics significantly ([Jostlin, Priebisch, and Singleton \(2014\)](#); [Ludvigson and Ng \(2009\)](#)). For the equity market return, we include traditional predictors including the log dividend price ratio, the log earnings price ratio, the net equity expansion factor of [Goyal and Welch \(2008\)](#) (obtained from Amit Goyal's webpage), and the default spread equal to the difference between Moodys BAA and AAA corporate bond spreads.

3 Empirical Results

In this section, we report empirical results of (both bond and equity) return predictive regressions for 1-, 3-, 6-, and 12-month holding horizons. We start with simple univariate regressions to document the role of our main explanatory variable, i.e., interest rate variance risk premium. We

then include the equity variance risk premium and forward spread in the predictive regressions to document the differential predictive power of these three factors for different tenors of the underlying assets. Finally, we control for other well-known predictors of bond and equity risk premia for robustness.

The start date for all regressions is March 1993. All regressions are standardized, in the sense that each variable is first demeaned and then divided by its standard deviation. Such standardized regressions make slope coefficients comparable across different regressors, allowing a comparison of both statistical and economic significance. We report t -statistics adjusted for [Newey and West \(1987\)](#) standard errors, with the optimal lag length determined according to [Newey and West \(1994\)](#) for each estimated coefficient.

3.1 Return Predictability with Interest Rate Variance Risk Premium

We first assess the predictive power of the interest rate variance risk premium for Treasury and equity excess returns by the following univariate regressions:

$$rx_{t+h}^{(\tau)} = \beta_0^{(\tau)} + \beta_1^{(\tau)}(h) \cdot \text{IRVRP}_t + \epsilon_{t+h}^{(\tau)}, \quad (7)$$

where $rx_{t+h}^{(\tau)}$ is the h -period excess return for a Treasury security with tenors of τ ($=2, 3, 4, 5, 6, 7, 8, 9, 10, 15,$ and 20) years, and the equity market portfolio with $\tau = \infty$ tenor, and IRVRP_t is the interest rate variance risk premium measure.

The regression results are reported in [Table 2](#). We observe that IRVRP significantly predicts short-horizon bond excess returns positively with solid t -statistics based on Newey-West robust standard errors, up to 6-month holding horizons. For example, one standard deviation increase in IRVRP leads to a 201 ($=0.568 \cdot 3.53\%$), 181 ($=0.364 \cdot 4.96\%$), and 146 ($=0.221 \cdot 6.60\%$) basis point increase (slope coefficient times the standard deviation of the 10-year bond excess return) increase in expected 10-year bond excess returns, at the 1-, 3-, and 6-month holding horizons, respectively. Adjusted R^2 s range from 5% for the 6-month holding horizon to 32% for the 1-month holding

horizon.

Furthermore, both the economic and statistical significance of IRVRP monotonically decrease with the tenor of the asset. For example, the regression coefficient, t -statistics, and adjusted R^2 s all decreasing functions of the asset tenor, and IRVRP loses the significance for equity market returns that has a tenor of ∞ . Top panels of [Figure 2](#) plot the univariate regression results for the 3-month holding horizon, with the estimated coefficient $\beta_1^\tau(3)$ of IRVRP in the top left panel, and the associated adjusted R^2 in the top right panel, against the tenor τ . The regression coefficients monotonically decrease from about 0.8 to 0.2 for Treasuries when the maturity increases from 2 years to 20 years and to about 0.1 for the equity market return. Correspondingly, the adjusted R^2 decreases from about 60% to 3% and to less than 2% for Treasuries and equities, respectively.

To summarize, IRVRP is a strong predictor of short-horizon asset excess returns, and its predictive power has a sharp monotonically decreasing pattern with the tenor of the asset.

3.2 Interest Rate vs Equity Variance Risk Premium

Our interest rate variance risk premium is constructed in a similar way to the equity variance risk premium – both are the difference between option-implied variance and realized variance. Moreover, as shown in the last subsection, the predictive power of IRVRP remains the strongest at short-holding horizons, the same pattern as the EVRP’s predictive power for the equity market return as first established by [Bollerslev, Tauchen, and Zhou \(2009\)](#). Hence, it is natural to expect that IRVRP and EVRP both capture a *similar* fashion of “short-horizon” volatility risk. But do they capture the *same* type of volatility risk? If not, what is the channel in distinguishing them?

In this subsection, we study the predictive power of the equity variance risk premium for both the bond and equity market excess returns. Most importantly, we document distinguishing patterns of return predictive power of IRVRP and EVRP, which shed light on different potential channels of volatility risk in driving asset prices. In particular, we first consider the univariate regressions:

$$rx_{t+h}^{(\tau)} = \beta_0^{(\tau)} + \beta_1^{(\tau)}(h) \cdot \text{EVRP}_t + \epsilon_{t+h}^{(\tau)}, \quad (8)$$

where $rx_{t+h}^{(\tau)}$ is the h -period excess return for a Treasury security with tenors of τ ($=2, 3, 4, 5, 6, 7, 8, 9, 10, 15,$ and 20) years, and the equity market portfolio with $\tau = \infty$ tenor, and EVRP_t is the equity variance risk premium measure constructed by [Bollerslev, Tauchen, and Zhou \(2009\)](#) using S&P 500 index options.

The regression results are reported in [Table 3](#). We observe that EVRP significantly predicts short-horizon excess returns of the long-term Treasury securities and equity market return. The regression coefficient for the equity market return is positive, and remains the most significant at the 3-month holding horizon with t -statistics about 8.67 and adjusted R^2 about 12%, consistent with [Bollerslev, Tauchen, and Zhou \(2009\)](#). For bond returns, the regression coefficient is negative, consistent with the negative correlation between the equity and Treasury in the recent decades, as documented in [Campbell, Pflueger, and Viceira \(2015\)](#).

To compare with the return predictive power of IRVRP, we report the univariate regression results for 3-month holding horizon in middle panels of [Figure 2](#), with the estimated coefficient $\beta_1^\tau(3)$ of EVRP in the middle left panel, and the associated adjusted R^2 in the middle right panel, against the tenor τ . For the convenience of comparing the economic significance, we report the absolute values of the regression coefficients on EVRP for bonds. We find that the regression coefficients and adjusted R^2 s of EVRP all monotonically *increase* with the tenor of the asset, in sharp contrast to the *decreasing* predictive power of IRVRP. This sharp contrast suggests distinguishing economic effects of interest rate and equity variance risk premium: IRVRP seems to capture the volatility risk of short tenor, while EVRP seems capture the volatility risk of long tenor.

Given the distinctive pattern of return predictive power of the interest rate and equity variance risk premium, we expect the return predictability of IRVRP is robust to the inclusion of EVRP.

To verify this conjecture, we run the following multivariate return predictive regressions:

$$rx_{t+h}^{(\tau)} = \beta_0^{(\tau)} + \beta_1^{(\tau)}(h) \cdot \text{IRVRP}_t + \beta_2^{(\tau)}(h) \cdot \text{EVRP}_t + \epsilon_{t+h}^{(\tau)}. \quad (9)$$

Results are reported in [Table 4](#). Controlling for the equity variance risk premium, the predictability of the interest rate variance risk premium is almost unchanged. Its monotonically decreasing significance as a function of the asset tenor remains the same.

3.3 Interest Rate Variance Risk Premium vs Forward Spread

It has been well established in the literature that yield-based factors are strong predictors of bond returns ([Fama and Bliss \(1987\)](#), [Campbell and Shiller \(1991a\)](#), and [Cochrane and Piazzesi \(2005\)](#)). As our interest rate variance risk premium measure is constructed using prices of swaptions that are derivatives on yields in principal, it is natural to ask whether IRVRP is a mere reflection of information already contained in the yield curve.

Most term structure models use the first three principal components of the yield curve as factors because they capture most of the variation in yields. Among the three principal components, the slope factor or the spread between long-term and short-term yields has been shown to possess significant predictive power for bond risk premia ([Fama and Bliss \(1987\)](#) and [Campbell and Shiller \(1991a\)](#)). In this subsection, we study the predictive power of the forward spread, as proposed in [Fama and Bliss \(1987\)](#), for both the bond and equity market excess returns, and compare its return predictive power with that of the interest rate variance risk premium. Importantly, we document that the pattern of return predictive power of IRVRP is distinct from and robust to that of the FS (We also differentiate the return predictive power of interest rate variance risk premium from that of the ten-shape yield factor of [Cochrane and Piazzesi \(2005\)](#) as a robustness check in [subsection 3.4](#)).

In particular, we first consider the following univariate regressions:

$$rx_{t+h}^{(\tau)} = \beta_0^{(\tau)} + \beta_1^{(\tau)}(h) \cdot \text{FS}_t^{(\tau)} + \epsilon_{t+h}^{(\tau)}, \quad (10)$$

where $rx_{t+h}^{(\tau)}$ is the h -period excess return for a Treasury security with tenors of τ ($=2, 3, 4, 5, 6, 7, 8, 9, 10, 15,$ and 20) years, and the equity market portfolio with $\tau = \infty$ tenor, and $\text{FS}_t^{(\tau)}$ is the forward spread between the one-year forward rate τ -year ahead and the on-year zero coupon yield.

The regression results are reported in [Table 5](#). We observe that the forward spread significantly predicts short-horizon Treasury excess returns, similar to both the interest rate and equity variance risk premium. The regression coefficient is positive with solid t -statistics based on Newey-West robust standard errors, consistent with [Fama and Bliss \(1987\)](#). Different from the interest rate and equity variance risk premium, however, neither the economic nor statistical significance of the forward spread is a monotonic function of the asset tenor; instead, its predictive power seems to peak at the medium tenor, around five years.

To have a sharp comparison, we report the univariate regression results of the forward spread for the 3-month holding horizon in bottom panels of [Figure 2](#), with the estimated coefficient $\beta_1^T(3)$ of FS in the bottom left panel, and the associated adjusted R^2 in the bottom right panel, against the tenor τ . We observe that both the regression coefficients and adjusted R^2 s of the forward spread increase from short tenor to medium tenor, and hence decrease moving to long tenor.

This distinctive pattern of return predictive power suggests that our interest rate variance risk premium captures a distinctive economic channel of risk premia than the forward spread, a well-established yield-based factor in the literature. To formally substantiate this conclusion, we run the following multivariate return predictive regressions:

$$rx_{t+h}^{(\tau)} = \beta_0^{(\tau)} + \beta_1^{(\tau)}(h) \cdot \text{IRVRP}_t + \beta_2^{(\tau)}(h) \cdot \text{FS}_t^{(\tau)} + \epsilon_{t+h}^{(\tau)}. \quad (11)$$

Results are reported in [Table 6](#). We find that controlling for the forward spread, the predictability

of the interest rate variance risk premium weakens somewhat, especially at the 6-month holding horizon. However, the strong return predictive power remains strongly at the very short holding horizons, especially at the 1-month horizon. Moreover, the pattern of monotonically decreasing significance as a function of the asset tenor remains the same.⁷ This empirical result is rationalized within our long-run-risk type model presented in Section 4, where we show that the IRVRP is driven by only one state variable, namely, vol-of-vol factor q_t (see eq. (A.44) in the Appendix A.6) that reflects the nature of short-run risks, whereas the forward spread is the function of all state variables (see eq. (A.33) in the Appendix A.5), and thus captures both short- and long-run risks.

3.4 Robustness Checks

3.4.1 Subsample Analysis

One may be concerned that the recent financial crisis could be the single important driver of our empirical results. To address this concern, we run the return predictive regressions for two subsamples, from March 1993 to December 2003 and from January 2004 to February 2013. Table 7 reports the subsample regression results. We find that the interest rate variance risk premium has similar significant return predictive power in the two subsample periods, and is in fact even stronger, if anything, in the first subsample excluding the recent financial crisis. The monotonically decreasing significance of the interest rate variance risk premium as a function of the asset tenor remains little changed.

3.4.2 Realized Variance based on High-Frequency Swap Rates

Our baseline measure of interest rate variance risk premium has the realized variance measure constructed using daily series of swap rates. In this section, we check the robustness of our results using high-frequency data of swap rates to construct the measure of realized variance. In particular,

⁷We also run multivariate regressions of asset excess returns on the interest rate variance risk premium, controlling for both the forward spreads and the equity variance risk premium, as reported in Table B1. Results further confirm the differential return predictive power of our interest rate variance risk premium factor from the other two.

we obtain the intraday 10-year swap rates from February 11, 2002 to January 31, 2013, provided by Barclays. We follow the literature to use the 5-minute series to strike a balance between the accuracy that increases with frequency in econometric theory and the microstructure issues such as price discreteness, bid-ask spreads, and non-synchronous trading effects that increase with frequency in practice (Andersen, Bollerslev, Diebold, and Labys (2000), Hansen and Lunde (2006), Bollerslev, Tauchen, and Zhou (2009)). In consequence, we use about 80 five-minute observations each day from 8:20 am to 3:00 pm US EST to estimate the realized variance according to (2). We then take the difference between the implied variance using swaptions on 10-year swap rate and this realized variance to get the alternative measure of interest rate variance risk premium, denoted as $\text{IRVRP}_t^{5-\text{min}}$.

Table 8 repeats our baseline regression (7) using the alternative measure $\text{IRVRP}_t^{5-\text{min}}$ of interest rate variance risk premium. The return predictive power becomes weaker than the baseline results in Table 2, probably because $\text{IRVRP}_t^{5-\text{min}}$ only captures information in the 10-year tenor while our baseline measure of interest rate variance risk premium combines information from multiple tenors. Yet, we still observe pretty significant predictive power of $\text{IRVRP}_t^{5-\text{min}}$ at the 1-month horizon. Most importantly, the sharp monotonically decreasing significance with the asset tenor remains the same as the baseline regressions.

3.4.3 Alternative Treasury Datasets

We check the robustness of the return predictive power of the interest rate variance risk premium using two alternative Treasury datasets in this section. First, we use the Fama-Bliss discount bond database from CRSP, which contains Treasury notes with maturities of 1, 2, 3, 4, and 5 years, to compute the Treasury excess returns. The Fama-Bliss database is also used in Fama and Bliss (1987), Cochrane and Piazzesi (2005), and so on. Panel A of Table 9 repeats our baseline regression (7) using the Treasury excess returns based on the Fama-Bliss database. We find that both the significant predictive power and the monotonically decreasing significance with the asset tenor, of the interest rate variance risk premium, remain the same.

Second, we use actual traded bonds from the Fama dataset in CRSP, different from the interpolated bond yields in both the [Gürkaynak, Sack, and Wright \(2007\)](#) and Fama-Bliss datasets, to compute the Treasury excess returns. This dataset combines actually traded Treasury bonds into portfolios of different maturity buckets, and computes an equal weighted average of 1-month holding period returns of all bonds in the portfolio. We obtain monthly return series and compute returns in excess of the 3-month T-bill rate. Panel B of [Table 9](#) repeats our baseline regression [\(7\)](#) using the Treasury excess returns based on this Fama bond portfolios. We observe that the interest rate variance risk premium still possess strong and significant return predictive power, with t -statistics above 11 and adjusted R^2 's above 37%. The monotonically decreasing significance with the asset tenor remains the same.

3.4.4 Control for Additional Return Predictors

We now control for additional predictors of Treasury and equity returns. For Treasuries, we control for the tent-shape yield factor of [Cochrane and Piazzesi \(2005\)](#) (CP) as well as two macro factors including the economic growth (GRO) and the expected inflation (INF) ([Table B2](#) in the Appendix reports the results controlling for the macro principal component factors of [Ludvigson and Ng \(2009\)](#)). For the equity market return, we control for traditional predictors including the log dividend price ratio (d/p), the log earnings price ratio (e/p), the net equity expansion (NTIS) factor of [Goyal and Welch \(2008\)](#), and the default spread (DS).

[Table 10](#) reports the regression of the Treasury and equity excess returns on the interest rate variance risk premium, controlling for these additional return predictors. We find that the interest rate variance risk premium still possess strong and significant return predictive power for Treasuries, controlling for the CP, GRO, and INF factors. Its return predictive power for the equity market excess returns becomes more significant, with t -statistics around two at the 1- and 3-month holding horizons, controlling for the traditional equity return predictors. The monotonically decreasing significance with the asset tenor remains the same as the baseline results.

4 Model and Asset Pricing

We have shown in Section 3 that the interest rate variance risk premium robustly predicts nominal Treasury bond returns especially at short maturities. We have also shown that its predictive power declines with the maturity of the Treasury security and the holding period horizon. In addition, we have shown that other predictors, such as forward spread, drive longer-maturity Treasury bond returns and at longer holding-period horizons. To reconcile these findings with the theory, we propose a consumption-based asset pricing model, which explains these predictability patterns with short-run and long-run risk factors. Specifically, we propose a long-run-risk-type consumption-based asset pricing model with consumption (short-run growth) risk, expected consumption (long-run growth) risk, consumption volatility (long-run volatility) risk, and consumption volatility-of-volatility (short-run volatility) risk. Such a framework delivers a two-factor structure for the bond risk premium, which is perfectly spanned by the bond variance risk premium (loaded only on short-run volatility) and forward spread (loaded on both short-run and long-run volatilities).

4.1 Preferences

We consider a discrete-time endowment economy with recursive preferences introduced by [Kreps and Porteus \(1978\)](#), [Epstein and Zin \(1989\)](#), and [Weil \(1989\)](#):

$$U_t = \left[(1 - \delta) C_t^{\frac{1-\gamma}{\theta}} + \delta (\mathbf{E}_t U_{t+1}^{1-\gamma})^{\frac{1}{\theta}} \right]^{\frac{\theta}{1-\gamma}}, \quad (12)$$

where δ is the time discount factor, $\gamma \geq 0$ is the risk aversion parameter, $\psi \geq 0$ is the intertemporal elasticity of substitution (IES), and $\theta = \frac{1-\gamma}{1-\frac{1}{\psi}}$. Preference for early resolution of uncertainty implies $\gamma > \frac{1}{\psi}$, which, in general, implies $\theta < 1$. We will assume throughout the paper that $\gamma > 1$ and $\psi > 1$, which implies $\theta < 0$ and refer to preference for early resolution of uncertainty as consistent with $\theta < 0$.⁸ A special case of recursive preferences—expected utility—corresponds to the case of

⁸[Bansal, Kiku, and Yaron \(2012, BKY\)](#) discuss the wide range of regression-based estimates of the IES in the literature and their sensitivity to the presence of measurement errors. They argue that a better approach is undertaken in [Bansal, Kiku, and Yaron \(2007\)](#) and [Hansen, Heaton, Lee, and Roussanov \(2007\)](#) who use a large set

$$\gamma = \frac{1}{\psi} (\theta = 1).$$

Epstein and Zin (1989) show that the log-linearized form of the associated real stochastic discount factor m_t is given by:

$$m_{t+1} = \theta \ln \delta - \frac{\theta}{\psi} g_{t+1} + (\theta - 1) r_{c,t+1}, \quad (13)$$

where $g_{t+1} = \log\left(\frac{C_{t+1}}{C_t}\right)$ is the log growth of the aggregate consumption, $r_{c,t+1}$ is the log return on an aggregate wealth portfolio that delivers aggregate consumption as its dividend each time period. Note that the return on wealth is different from the observed return on the market portfolio because aggregate consumption is not equal to aggregate dividends. Consequently, the return on wealth is not observable in the data. The nominal discount factor $m_{t+1}^{\$}$ is equal to the real discount factor minus expected inflation π_{t+1} :

$$m_{t+1}^{\$} = m_{t+1} - \pi_{t+1}. \quad (14)$$

4.2 Economy Dynamics

To solve for the equilibrium asset prices we specify consumption and inflation dynamics. Consumption dynamics features time-varying consumption growth rate g_t and expected consumption growth rate x_t , time-varying volatility of consumption growth $\sigma_{g,t}^2$ and time-varying volatility-of-

of instruments to estimate conditional Euler equations for the real bond and find that the IES is larger than one. Beeler and Campbell (2012) disagree in a sense that aggregate consumption growth does not appear to respond to the real risk-free rate fluctuations in a manner consistent with IES being greater than one. They report, however, that their instrumental variables estimation approach of the BKY model yields the median estimates above 1.3.

volatility of consumption growth q_t :

$$\begin{aligned}
x_{t+1} &= \rho_x x_t + \phi_e \sigma_{g,t} z_{x,t+1}, \\
g_{t+1} &= \mu_g + x_t + \sigma_{g,t} z_{g,t+1}, \\
\sigma_{g,t+1}^2 &= a_\sigma + \rho_\sigma \sigma_{g,t}^2 + \sqrt{q_t} z_{\sigma,t+1}, \\
q_{t+1} &= a_q + \rho_q q_t + \phi_q \sqrt{q_t} z_{q,t+1},
\end{aligned} \tag{15}$$

where the parameters satisfy $a_\sigma > 0$, $a_q > 0$, $|\rho_\sigma| < 1$, $|\rho_q| < 1$ and $\phi_q > 0$. The vector of shocks $(z_{x,t+1}, z_{g,t+1}, z_{\sigma,t+1}, z_{q,t+1})$ follows *i.i.d.* normal distribution with zero mean and unit variance and shocks are assumed to be uncorrelated among themselves. The second pair of equations in (15) is new compared to [Bansal and Yaron \(2004\)](#) and [Bansal and Shaliastovich \(2013\)](#). Stochastic volatility $\sigma_{g,t+1}^2$ represents time-varying economic uncertainty in consumption growth with time-varying volatility-of-volatility (vol-of-vol) measured by q_t .⁹ Since $\sigma_{g,t}^2$ directly affects variation in x_t , the predictable component in consumption growth, we will refer to $\sigma_{g,t}^2$ as the state variable that captures *the long-run risk*. The volatility-of-volatility process q_t can be thought of as the volatility risk or, *the short-run risk*. As we saw earlier, this terminology was supported by our empirical findings.

In order for the real economy model (15) to have realistic implications for nominal bond risk premiums, we conjecture a fairly rich inflation process motivated by previous literature. Indeed, [Bansal and Shaliastovich \(2013\)](#) allow for expected inflation shocks to be correlated (negatively) with expected consumption growth, and [Zhou \(2011\)](#) allows for a vol-of-vol shock to affect inflation. We incorporate both of these features into expected inflation dynamics π_{t+1} :

$$\pi_{t+1} = a_\pi + \rho_\pi \pi_t + \phi_\pi z_{\pi,t+1} + \phi_{\pi g} \sigma_{g,t} z_{g,t+1} + \phi_{\pi \sigma} \sqrt{q_t} z_{\sigma,t+1}, \tag{16}$$

where ρ_π is a persistence and $\frac{a_\pi}{1-\rho_\pi}$ is the long-run mean of the inflation process. There are three

⁹Recent studies provided empirical support in favor of time-varying consumption growth volatility, e.g., [Bekaert and Liu \(2004\)](#), [Bansal and Yaron \(2005\)](#), [Lettau, Ludvigson, and Wachter \(2008\)](#), [Bekaert, Engstrom, and Xing \(2009\)](#), among others.

shocks that drive inflation process: (1) a constant volatility part ϕ_π with an autonomous shock $z_{\pi,t+1}$; (2) a stochastic volatility part $\phi_{\pi\sigma}\sigma_{g,t}$ that works through consumption growth channel $z_{g,t+1}$; and (3) another stochastic volatility part $\phi_{\pi\sigma}\sqrt{q_t}$ that works through the volatility channel $z_{\sigma,t+1}$. Exogenous inflation shock $z_{\pi,t+1}$ does not generate inflation risk premium even in the presence of the time-varying volatility of this shock.¹⁰ In contrast, the second and the third shocks generate inflation risk premium because real side shocks (stochastic volatility of consumption growth and uncertainty) affect inflation. In addition, since $\phi_{\pi g}$ and $\phi_{\pi\sigma}$ control inflation exposures to the growth and uncertainty risks, this process implicitly violates inflation neutrality in the short run, but not in the long run.¹¹

4.3 Pricing kernel

In equilibrium, the log wealth-consumption ratio z_t is affine in expected consumption growth x_t , stochastic volatility of consumption growth σ_t^2 , and the vol-of-vol factor q_t :

$$z_t = A_0 + A_x x_t + A_\sigma \sigma_{g,t}^2 + A_q q_t. \quad (17)$$

Campbell and Shiller (1988) show that the return on this asset can be approximated as follows:

$$r_{c,t+1} = \kappa_0 + \kappa_1 z_{t+1} - z_t + g_{t+1}, \quad (18)$$

where $\kappa_0 = \ln(1 + \exp(\bar{z})) - \kappa_1 \bar{z}$, $\kappa_1 = \frac{\exp(\bar{z})}{1 + \exp(\bar{z})}$, and \bar{z} is the average wealth-consumption ratio:

$$\bar{z} = A_0(\bar{z}) + A_\sigma(\bar{z})\bar{\sigma}^2 + A_q(\bar{z})\bar{q}. \quad (19)$$

¹⁰The inability of the expected inflation process with only one (autonomous) shock even with stochastic volatility to generate inflation risk premium is examined in Zhou (2011).

¹¹There is no violation of inflation neutrality in the long run because unconditional expectation of inflation process (16) is $E\pi_t = \frac{\alpha_\pi}{1 - \rho_\pi}$.

The equilibrium loadings for (17) are derived in Appendix A.1:

$$\begin{aligned}
A_x &= \frac{1 - \frac{1}{\psi}}{1 - \kappa_1 \rho_x}, \\
A_\sigma &= \frac{1}{2\theta(1 - \kappa_1 \rho_\sigma)} \left[\left(\theta - \frac{\theta}{\psi} \right)^2 + (\theta \kappa_1 A_x \phi_e)^2 \right], \\
A_q &= \frac{1 - \kappa_1 \rho_q - \sqrt{(1 - \kappa_1 \rho_q)^2 - \theta^2 \kappa_1^4 \phi_q^2 A_\sigma^2}}{\theta(\kappa_1 \phi_q)^2}.
\end{aligned} \tag{20}$$

As in [Bansal and Yaron \(2004\)](#), recursive preferences along with the early resolution of uncertainty are crucial in determining the sign of the equilibrium loadings of the state variables in our model. When the intertemporal elasticity of substitution $\psi > 1$, the intertemporal substitution effect dominates the wealth effect. In response to higher expected consumption growth, agents invest more and, consequently, wealth-consumption ratio increases. Therefore, the wealth-consumption ratio loading on the expected consumption growth is positive ($A_x > 0$) whereas loadings on the volatility and volatility-of-volatility of consumption growth are both negative ($A_\sigma < 0$ and $A_q < 0$) as in times of high volatility and/or uncertainty agents sell off risky assets driving the wealth-consumption ratio down.¹²

The persistence of expected growth shock ρ_x and time-varying volatility ρ_σ magnify the effect of the changes in these state variables on the valuation ratio since investors perceive such macroeconomic changes as long-lasting. Contrary to that, persistence of the volatility-of-volatility, ρ_q , roughly cancels out in the A_q loading. This provides further support for interpretation of q_t as a state variable that captures relatively short-run economic risks.¹³

Using the solution for the wealth-consumption ratio above, we show in Appendix A.3 that the conditional mean of the stochastic discount factor m_{t+1} is linear in the fundamental state variables and the innovation in m_{t+1} pins down the fundamental sources of (and compensations for) risks

¹²The solution for A_q represents one of a pair of roots of a quadratic equation, but we pick the one presented in Eq. (20) as the more meaningful one. We elaborate on this choice in Section A.1.

¹³[Bansal, Kiku, and Yaron \(2012\)](#) check that their approximate solutions are very accurate when compared against numerical solutions, used, e.g., in [Binsbergen, Brandt, and Koijen \(2012\)](#).

in the economy:

$$m_{t+1} - E_t[m_{t+1}] = -\lambda_g \sigma_{g,t} z_{g,t+1} - \lambda_x \sigma_{g,t} z_{x,t+1} - \lambda_\sigma \sqrt{q_t} z_{\sigma,t+1} - \lambda_q \sqrt{q_t} z_{q,t+1}, \quad (21)$$

where the quantities of risks are time-varying volatility and volatility-of-volatility of consumption growth, $\sigma_{g,t}$ and $\sqrt{q_t}$, respectively; and λ_g , λ_x , λ_σ , λ_q represent the market prices of risk of consumption growth, expected consumption growth, volatility, and volatility-of-volatility:

$$\begin{aligned} \lambda_g &= \gamma, & \lambda_\sigma &= (1 - \theta) \kappa_1 A_\sigma, \\ \lambda_x &= (1 - \theta) \kappa_1 A_x \phi_e, & \lambda_q &= (1 - \theta) \kappa_1 A_q \phi_q. \end{aligned} \quad (22)$$

The market price of consumption risk λ_g is equal to the coefficient of relative risk aversion γ . Other risk prices crucially depend on our preference assumptions.

When agents have preference for early resolution of uncertainty ($\theta < 0$), the market price of expected consumption risk is positive: $\lambda_x > 0$. In this case, positive shocks to consumption and expected consumption cause risk premium to decrease as agents buy risky assets and drive wealth-consumption ratio up. On the contrary, market prices of risk of volatility and volatility-of-volatility are negative ($\lambda_\sigma < 0$ and $\lambda_q < 0$): Consistent with the so-called leverage effect, in response to either type of volatility positive shock, agents sell risky assets and drive wealth-consumption ratio down and volatility risk premiums up. It is worth noting that these effects are not based on the statistical linkages between return and volatility, as the endowment and volatility shocks are uncorrelated; but arise endogenously in the equilibrium. In the absence of recursive preference for an early resolution of uncertainty ($\gamma = \frac{1}{\psi}$ and $\theta = 1$), there would be no compensations for investors for bearing risks in expected consumption, volatility, or volatility-of-volatility.

4.4 Asset Prices

We focus in this paper on the nominal yield curve and nominal bond return predictability. Hence in this section we provide the model solutions for the nominal quantities in our economy.¹⁴

Nominal risk-free rate. The nominal risk-free rate is the negative of the (log) price of the nominal one-period bond. Thus, it is equal to the real risk-free rate plus inflation compensation. The closed form expression for the nominal risk-free rate is derived in Appendix A.3:

$$\begin{aligned}
r_{f,t}^{\$} &= -\theta \ln \delta + \gamma \mu_g + a_\pi - (\theta - 1)[\kappa_0 + (\kappa_1 - 1)A_0 + \kappa_1(A_\sigma a_\sigma + A_q a_q)] - \frac{1}{2}\phi_\pi^2 \\
&+ [\gamma - (\theta - 1)A_x(\kappa_1 \rho_x - 1)] x_t \\
&+ \left[-(\theta - 1)A_\sigma(\kappa_1 \rho_\sigma - 1) - \frac{1}{2}\gamma^2 - \frac{1}{2}(\theta - 1)^2(\kappa_1 A_x \phi_e)^2 - \frac{1}{2}\phi_{\pi g}^2 - \gamma \phi_{\pi g} \right] \sigma_{g,t}^2 \\
&+ \left[-(\theta - 1)A_q(\kappa_1 \rho_q - 1) - \frac{1}{2}(\theta - 1)^2 \kappa_1^2 (A_\sigma^2 + A_q^2 \phi_q^2) - \frac{1}{2}\phi_{\pi \sigma}^2 + (\theta - 1)\kappa_1 A_\sigma \phi_{\pi \sigma} \right] q_t \\
&+ \rho_\pi \pi_t.
\end{aligned} \tag{23}$$

Since inflation is not an autonomous process, it affects loadings on σ_t^2 and q_t in (23) via additional terms, related to $\phi_{\pi g}$ and $\phi_{\pi \sigma}$ coefficients, respectively, besides having a direct effect on the nominal rates, $\rho_\pi \pi_t$. This results in inflation short-run non-neutrality, which means that inflation is affected by future real growth in the economy.

Nominal n -period bond price. A general recursion for solving for the n -period nominal bond price is as follows:

$$P_t^{\$,n} = \mathbb{E}_t \left[M_{t+1}^{\$} P_{t+1}^{\$,n-1} \right]. \tag{24}$$

We assume that the (log) price of the n -period nominal bond $p_t^{\$,n}$ follows an affine representation of the real state variables x_t , σ_t^2 , q_t and inflation π_t :

$$p_t^{\$,n} = B_0^{\$,n} + B_1^{\$,n} x_t + B_2^{\$,n} \sigma_t^2 + B_3^{\$,n} q_t + B_4^{\$,n} \pi_t. \tag{25}$$

¹⁴The corresponding real quantities are can be computed similarly and available upon request.

We solve for the nominal bond state loadings $B_i^{\$,n}$, $i = 0, \dots, 4$ using initial conditions $B_i^{\$,0} = 0$, $i = 0, \dots, 4$ (since $p_t^{\$,0} = 0$) and the above recursion, see Appendix A.4.

Nominal bond risk premium. Nominal bond risk premium $\text{brp}_t^{\$,n}$ is given by the negative of covariance between the nominal pricing kernel $m_{t+1}^{\$,n-1}$ and the nominal bond price $p_{t+1}^{\$,n-1}$ (see Appendix ?? for details):

$$\begin{aligned}
\text{brp}_t^{\$,n} &= -\text{Cov}_t \left[m_{t+1}^{\$,n-1}, p_{t+1}^{\$,n-1} \right] \\
&= \left[(\gamma + \phi_{\pi g}) B_4^{\$,n-1} \phi_{\pi g} - (\theta - 1) \kappa_1 A_x B_1^{\$,n-1} \phi_e^2 \right] \sigma_{g,t}^2 \\
&\quad - \left[((\theta - 1) \kappa_1 A_\sigma - \phi_{\pi \sigma}) (B_2^{\$,n-1} + B_4^{\$,n-1} \phi_{\pi \sigma}) + (\theta - 1) \kappa_1 A_q B_3^{\$,n-1} \phi_q^2 \right] q_t \\
&\quad + B_4^{\$,n-1} \phi_\pi^2 \\
&\equiv \beta_1^{\$,n-1} \sigma_{g,t}^2 + \beta_2^{\$,n-1} q_t + B_4^{\$,n-1} \phi_\pi^2.
\end{aligned} \tag{26}$$

Bond risk premium (26) is driven by two volatility factors: consumption volatility factor $\sigma_{g,t}^2$ and volatility-of-volatility factor q_t .¹⁵

The effect of expected growth risk captured by A_x equilibrium loading on the wealth-consumption ratio amplifies the overall contribution of the consumption risk, $\sigma_{g,t}$. This effect is absent in Zhou (2011) and Mueller, Vedolin, and Zhou (2011), and thus, makes it more difficult to explain the upward sloping term structure of the nominal yield curve. The two volatility factors $\sigma_{g,t}^2$ and q_t are inherently latent factors in bond risk premium. While consumption volatility risk $\sigma_{g,t}^2$ represents the classic risk-return tradeoff and is the standard factor in consumption-based models, q_t factor did not receive a lot of attention with the exception of Bollerslev, Tauchen, and Zhou (2009) paper. The next section demonstrates how q_t factor can be empirically isolated from $\sigma_{g,t}^2$ factor.

Nominal bond variance risk premium. Bollerslev, Tauchen, and Zhou (2009) show that the equity variance risk premium—the difference in expectations of the equity variance under risk-neutral and physical measures—is driven entirely by the vol-of-vol factor q_t and is a useful predictor of time variation in aggregate stock returns. Motivated by this result, we derive the

¹⁵ The third constant term provides a correction for inflation risk through ϕ_π , due to the autonomous inflation shock π_t .

nominal bond variance risk premium (BVRP)—the difference in expectations of the bond return variance under risk-neutral and actual measures. We show in this section that the BVRP also loads entirely on the q_t factor.

By definition, nominal bond variance risk premium is given by the covariance of the nominal bond return variance $\sigma_{r^s,t+1}^2$ with the nominal stochastic discount factor m_{t+1}^s :

$$\mathbb{E}_t^{\mathbb{Q}} \left[\sigma_{r^s,t+1}^2 \right] - \mathbb{E}_t \left[\sigma_{r^s,t+1}^2 \right] = \text{Cov}_t \left[\sigma_{r^s,t+1}^2, m_{t+1}^s \right]. \quad (27)$$

In terms of the model parameters, the nominal bond variance risk premium is given by:

$$\begin{aligned} \text{BVRP}_t^{s,n} \left[\sigma_{r^s,t+1}^2 \right] &= \mathbb{E}_t^{\mathbb{Q}} \left[\sigma_{r^s,t+1}^2 \right] - \mathbb{E}_t \left[\sigma_{r^s,t+1}^2 \right] = \\ &(\theta - 1)\kappa_1 \left\{ (A_\sigma - \phi_{\pi\sigma}) \left[\left(B_1^{s,n-2} \phi_e \right)^2 + \left(B_4^{s,n-2} \phi_{\pi g} \right)^2 \right] + \right. \\ &\left. A_q \phi_q^2 \left[\left(B_2^{s,n-2} + B_4^{s,n-2} \phi_{\pi\sigma} \right)^2 + \left(B_3^{s,n-2} \phi_q \right)^2 \right] \right\} q_t. \end{aligned} \quad (28)$$

Appendix [A.6](#) provides derivation details for (28).

A first and central observation here is that the time variation in the nominal BVRP is solely due to the time variation in q_t state variable. If volatility-of-volatility is constant, $q_t = q$, eq. (28) reduces to a constant $(\theta - 1)\kappa_1 \left\{ (A_\sigma - \phi_{\pi\sigma}) \left[\left(B_1^{s,n-2} \phi_e \right)^2 + \left(B_4^{s,n-2} \phi_{\pi g} \right)^2 \right] \right\} q$, contrary to empirical evidence presented earlier in the paper that the nominal bond variance risk premium is time-varying. A second observation is that, although consumption growth risk $\sigma_{g,t}^2$ does not affect the nominal bond variance risk premium directly, it still has an indirect effect through the pricing solution. If consumption volatility $\sigma_{g,t}^2$ is not stochastic, then the wealth-consumption ratio equilibrium loadings $A_\sigma = 0$ and $A_q = 0$ by construction, and bond variance risk premium is zero. A third observation is that if there is no recursive preference ($\theta = 1$), then bond variance risk premium is zero by construction. Lastly, positivity of the nominal bond variance risk premium is guaranteed by negative θ along with negative A_σ and A_q .

5 Calibration

In this section we discuss calibration of the nominal yield curve implied by our model (15) and inflation process (16). We consider two benchmark cases, [Bansal and Yaron \(2004, BY\)](#) and [Bollerslev, Tauchen, and Zhou \(2009, BTZ\)](#). Compared to BY, BTZ incorporate the time-varying vol-of-vol factor, but in the absence of the long-run risk channel. We differ from BTZ in two aspects: (1) we have the long-run risk state variable in the real side model; and (2) we model inflation process in order to derive implications for the nominal bond prices. We present all three models' parameters (BY, BTZ, and ours) in [Table 11](#).

5.1 Calibration Parameters

Panel A provides calibration values for the real economy dynamics. We set preference parameters $\delta = 0.997$, $\gamma = 8$, and $\psi = 1.5$.¹⁶ Consumption growth parameters $\mu_g = 0.0015$, $\rho_x = 0.979$, $\phi_e = 0.001$ are consistent with BY (and BTZ except for $\rho_x = \phi_e \equiv 0$). Volatility persistence $\rho_\sigma = 0.978$ is the same as in BY and BTZ, and $a_\sigma = (1 - \rho_\sigma)E\sigma$ is set so that the unconditional expectation $E\sigma_t^2 = 0.0234^2$, which is slightly higher than in BY and BTZ because we find that this value matches better the nominal yield curve in the model. We set the expected volatility-of-volatility level $Eq = a_q(1 - \rho_q)^{-1} = 10^{-9}$ so that $a_q = 2^{-10}$ given $\rho_q = 0.8$. In addition, $\phi_q = 10^{-4}$. Our choice of ρ_σ and ρ_q is broadly consistent with the estimates of [Bollerslev, Xu, and Zhou \(2013\)](#), who find that the long-run risk (proxied by $\sigma_{g,t}^2$) is more persistent than the short-run risk (proxied by q_t). Thus, the calibrated model is connected with the earlier empirical section where we show that these two types of risks in the nominal bond premium are disentangled.

Panel B provides calibration parameters for the inflation dynamics. We set the average annualized inflation rate $E\pi = 2\%$ and persistence parameter $\rho_\pi = 0.95$ in accordance with the current Fed's inflation target and Great Moderation period overall.¹⁷ Implied a_π on a monthly basis is

¹⁶BY and BTZ use $\gamma = 10$, but in our model slightly lower value of γ works reasonably well.

¹⁷These numbers may be justified by the data after 1980s and especially after 2008, when Fed launched unprecedented measures of accommodative monetary policy, namely, quantitative easing. Our expected inflation rate is lower than the one in [Bansal and Shaliastovich \(2013\)](#), who set it at 3.61% (see their Table 5).

equal to $E\pi(1 - \rho_\pi) = 0.02/12 \times 0.05 = 8 \times 10^{-5}$. The total unconditional variance of the inflation process (16) is given by:

$$\text{Var}(\pi) = \frac{1}{1 - \rho_\pi^2} (\phi_\pi^2 + \phi_{\pi g}^2 E\sigma^2 + \phi_{\pi\sigma}^2 E q). \quad (29)$$

We calibrate variance-related parameters of (29) so that the total annualized unconditional inflation volatility is 2%. Since $\rho_\pi = 0.95$, $E\sigma^2 = 0.0234^2$, $E q = 10^{-9}$, the term in parentheses in (29) on a monthly basis is: $\phi_\pi^2 + \phi_{\pi g}^2 \times 0.0234^2 + \phi_{\pi\sigma}^2 \times 10^{-9} = 0.02^2/12 \times (1 - 0.95^2) = 3.25 \times 10^{-6}$. Further, we assume that the first (autonomous) shock contributes one half to the total variance while the other two shocks contribute equally to the remaining half of the total variance of the inflation process.¹⁸ Thus, the contribution of the first shock to the total inflation variance is $0.5 \times 3.25 \times 10^{-6} = 1.625 \times 10^{-6}$, implying $\phi_\pi = 0.0013$. The contribution of the second and third shocks are equal to each other and to $0.25 \times 3.25 \times 10^{-6} = 8.125 \times 10^{-7}$. Therefore, the implied $\phi_{\pi g} = (8.125 \times 10^{-7}/0.0234^2)^{1/2} = -0.0385$. The negative sign of $\phi_{\pi g}$ is motivated by previous empirical findings (Piazzesi and Shneider, 2007; Campbell, Sunderam, and Viceira, 2013; Bansal and Shaliastovich, 2013). In particular, Bansal and Shaliastovich (2013) use SPF survey data for one-year ahead consensus inflation forecast over 1969-2010 sample and a latent factor for the expected consumption growth to estimate relationship between the two. They find that expected inflation negatively affects future consumption growth thus suggesting non-neutrality of inflation. Last, the implied $\phi_{\pi\sigma} = (8.125 \times 10^{-7}/10^{-9})^{1/2} = 28.5$.

5.2 Calibration Results

Figure 3 reports our calibration results. Both panels show the average nominal yield curve out to 10 years (blue solid line) in sample period from January 1991 to December 2010 and the calibrated nominal yield curve (red dashed line) implied by our model (Panel A) and by our modified model in the absence of the long-run risk channel x_t (Panel B). It is obvious from Panel A that our model

¹⁸Equal distribution of variance among the shocks results in slight overshooting of the model-implied interest rates levels relative to those in the sample.

matches very well the levels of the nominal yields and captures the slope of the yield curve too. The 1-, 5-, and 10-year model-implied yields are 3.71%, 5.14% and 5.58% relative to observed yields of 4%, 4.95%, and 5.65% at corresponding maturities. Panel B of Figure 3 shows that without long-run risk the model is not successful in fitting the nominal upward-sloping yield curve as it generates downward-sloping yield curve, even with the presence of time-varying economic uncertainty.¹⁹

To understand the effect of the long-run risk factor better, it is useful to write down the nominal yields as an affine combination of state variables:

$$y_t^{\$,n} = -\frac{1}{n} \left[B_0^{\$,n} + B_1^{\$,n} x_t + B_2^{\$,n} \sigma_t^2 + B_3^{\$,n} q_t + B_4^{\$,n} \pi_t \right], \quad (30)$$

where $B_1^{\$,n}$, $B_2^{\$,n}$, $B_3^{\$,n}$, $B_4^{\$,n}$ are model-implied nominal bond price loadings provided in Appendix A.4. The equilibrium nominal yield loadings are plotted in Figure 4.²⁰ In our model, nominal yields hedge expected consumption and inflation risks. As the top left panel of Figure 4 shows, nominal yields increase when expected consumption is high because $-B_1^{\$,n} > 0$, and the effect is stronger for higher n . Intuitively, a negative shock to expected consumption drives bond prices up and yields down and a positive shock to expected consumption drives bond prices down and yields up. The same effect is obvious for expected inflation as $-B_4^{\$,n} > 0$ and this loading is also increasing with maturity (bottom right panel). The top right panel shows the effect of consumption volatility shock on nominal yields. Corresponding loading $-B_3^{\$,n}$ manifests negative correlation of expected inflation and consumption growth that we discussed above. Initial effect of both positive consumption volatility and volatility-of-volatility shocks on yields is negative although this effect mean-reverts in the long-run. Given that the steady state values of consumption volatility and volatility-of-volatility processes are relatively small, long-run risk has the largest effect on nominal yields and helps to fit the upward-sloping nominal yields curve predominantly. Therefore,

¹⁹Bansal and Shaliastovich (2013) fit the term structure of interest rates for the short- and intermediate-term yields (up to five years only), whereas our model quantitatively matches the level and slope of the nominal term structure from one- to ten-year interest rates.

²⁰Nominal yield loadings are nominal bond price loadings with a negative sign.

the slope of the term structure of interest rates appears to be tightly linked to the slow-moving predictable component in consumption growth.

5.3 Model-implied Predictability

In this section we discuss model-implied predictability results using the model-implied slope and R^2 coefficients of bond risk premiums on the bond variance risk premiums regressions provided in the Appendix A.7. Figure 5 shows the model-implied slope coefficient b from regression (A.45). Consistent with our empirical evidence, the model-implied slope coefficient is positive everywhere, highest at the shortest maturities and declines rapidly with the horizon in a similar fashion to the top panels of Figure 2.

6 Conclusion

We study the bond pricing implications in the context of the long-run risks asset-pricing model with two types of volatility risks—long-run consumption volatility and short-run consumption volatility-of-volatility risks—and inflation non-neutrality. The model is promising in explaining important stylized facts of the Treasury market returns.

First, our reasonably calibrated version of the model with long-run and short-run volatility risks matches well the upward-sloping yield curve out to ten years, and the long-run risk plus inflation non-neutrality appear to be the main driving forces behind this result. Second, the interest-rate variance risk premium (IRVRP) constructed from interest rate derivatives markets drives short-horizon (one- and three-month) Treasury excess returns, while other popular predictive variables, such as Fama-Bliss forward spread or Cochrane-Piazzessi forward-rate factor drive variation in longer-horizon (one-year) Treasury excess returns.

Inside our model, time-varying bond risk premium is driven by two volatility factors—volatility of consumption and volatility-of-volatility of consumption; whereas bond variance risk premium loads entirely on the vol-of-vol factor, forward rate loads on both consumption volatility and vol-

of-vol factors plus growth and inflation factors. Since variance risk premium explains a significant part in variation in short-horizon Treasury excess returns, we interpret vol-of-vol factor as a short-run volatility risk factor. Since the forward-rate-related factors appear to explain time-variation in long-horizon Treasury excess returns, we interpret these factors as related to the long-run volatility risk factor. Thus, our model and empirical findings provide useful insights on different volatility risks in driving bond risk premium dynamics. These insights should be useful for market participants and monetary policy makers in practice.

References

- Adrian, T., and J. Rosenberg, 2008, “Stock Returns and Volatility: Pricing the Short-Run and Long-Run Components of Market Risk,” *Journal of Finance*, 63, 2997–3030.
- Andersen, T. G., T. Bollerslev, P. Christoffersen, and F. X. Diebold, 2006, “Volatility and Correlation Forecasting,” in *Handbook of Financial Forecasting*, ed. by G. Elliott, C. W. J. Granger, and A. Timmermann. Elsevier, Amsterdam.
- Andersen, T. G., T. Bollerslev, and F. X. Diebold, 2007, “Roughing it up: Including Jump Components in the Measurement, Modeling, and Forecasting of Return Volatility,” *Review of Economics and Statistics*, 89, 701–720.
- Andersen, T. G., T. Bollerslev, F. X. Diebold, and P. Labys, 2000, “Great Realizations,” *Risk*, 50, 331–367.
- Bansal, R., D. Kiku, and A. Yaron, 2007, “Risks for the Long-run: Estimation and Inference,” University of Pennsylvania, working paper.
- , 2012, “An Empirical Evaluation of the Long-Run Risks Model for Asset Prices,” *Critical Finance Review*, 1, 183–221.
- Bansal, R., and I. Shaliastovich, 2013, “A Long-Run Risks Explanation of Predictability Puzzles in Bond and Currency Markets,” *Review of Financial Studies*, 26(1), 1–33.
- Bansal, R., and A. Yaron, 2004, “Risks for the Long Run: A Potential Resolution of Asset Pricing Puzzles,” *Journal of Finance*, 59(4), 1481–1509.
- , 2005, “Interpretable Asset Markets?,” *European Economic Review*, 49, 531–560.
- Barndorff-Nielsen, O., and N. Shephard, 2004, “Power and Bipower Variation with Stochastic Volatility and Jumps,” *Journal of Financial Econometrics*, 2, 1–48.
- Beeler, J., and J. Campbell, 2012, “The Long-run Risks Model and Aggregate Asset Prices: An Empirical Assessment,” *Critical Finance Review*, 1, 183–221.
- Bekaert, G., E. Engstrom, and Y. Xing, 2009, “Risk, Uncertainty, and Asset Prices,” *Journal of Financial Economics*, 91(1), 59–82.
- Bekaert, G., and J. Liu, 2004, “Conditioning Information and Variance Bounds on Pricing Kernels,” *Review of Financial Studies*, 17, 339–78.
- Binsbergen, J. H. V., M. Brandt, and R. S. Koijen, 2012, “On the Timing and Pricing of Dividends,” *American Economic Review*, 102(4), 1596–1618.
- Black, F., 1976, “The Pricing of Commodity Contracts,” *Journal of Financial Economics*, 3, 16–179.
- Bloom, N., 2009, “The Impact of Uncertainty Shocks,” *Econometrica*, 77(3), 623–685.
- Bollerslev, T., G. Tauchen, and H. Zhou, 2009, “Expected Stock Returns and Variance Risk Premia,” *Review of Financial Studies*, 22(11), 4463–4492.

- Bollerslev, T., L. Xu, and H. Zhou, 2013, “Stock Return and Cash Flow Predictability: The Role of Volatility Risk,” *Journal of Econometrics*, 187(2), 458–471.
- Branger, N., P. Rodrigues, and C. Schlag, 2011, “Long-Run Risks in Economic Uncertainty and Implications for Equity Premium Puzzles,” Working paper, http://papers.ssrn.com/sol3/papers.cfm?abstract_id=2021070.
- Campbell, J., and R. Shiller, 1991a, “Yield Spreads and Interest Rate Movements: A Bird’s Eye View,” *Review of Economic Studies*, 58, 495–514.
- Campbell, J. Y., C. Pflueger, and L. Viceira, 2015, “Monetary Policy Drivers of Bond and Equity Risks,” Working Paper, Harvard University.
- Campbell, J. Y., and R. J. Shiller, 1988, “The Dividend-price Ratio and Expectations of Future Dividends and Discount Factors,” *Review of Financial Studies*, 1, 195–228.
- Campbell, J. Y., and R. J. Shiller, 1991b, “Yield Spreads and Interest Rate Movements: A Bird’s Eye View,” *Review of Economic Studies*, 58, 495–514.
- Campbell, J. Y., A. Sunderam, and L. Viceira, 2013, “Inflation Bets or Deflation Hedges? The Changing Risks of Nominal Bonds,” Working Paper, Harvard University.
- Carr, P., and D. Madan, 2001, “Towards a Theory of Volatility Trading,” *Option Pricing, Interest Rates and Risk Management, Handbooks in Mathematical Finance*, pp. 458–476.
- Carr, P., and L. Wu, 2009, “Variance Risk Premiums,” *Review of Financial Studies*, 22, 1311–1341.
- Christoffersen, P., K. Jacobs, C. Ornathanalai, and Y. Wang, 2008, “Option Valuation with Long-Run and Short-Run Volatility Components,” *Journal of Financial Economics*, 90, 272–297.
- Cochrane, J., and M. Piazzesi, 2005, “Bond Risk Premia,” *American Economic Review*, 95, 138–160.
- Corsi, F., 2009, “A Simple Approximate Long-Memory Model of Realized Volatility,” *Journal of Financial Econometrics*, 7(2), 174–196.
- Dai, Q., and K. Singleton, 2000, “Specification Analysis of Affine Term Structure Models,” *Journal of Finance*, LV, 1943–1978.
- Drechsler, I., 2013, “Uncertainty, Time-Varying Fear, and Asset Prices,” *Journal of Finance*, 68, 1843–1889.
- Duffee, G. R., 2011, “Information in (and not in) the Term Structure,” *Review of Financial Studies*, 24(9), 2895–2934.
- Epstein, L., and S. Zin, 1989, “Substitution, Risk Aversion and the Temporal Behavior of Consumption and Asset Returns: A Theoretical Framework,” *Econometrica*, 57, 937–969.
- Fama, E., 1984, “Term Premiums in Bond Returns,” *Journal of Financial Economics*, 13, 529–546.
- Fama, E., and R. Bliss, 1987, “The Information in Long-Maturity Forward Rates,” *The American Economic Review*, 77(4), 680–692.

- Gao, G., P. Gao, and Z. Song, 2015, “Do Hedge Funds Exploit Rare Disaster Concerns?,” Working Paper.
- Ghysels, E., A. Le, S. Park, and H. Zhu, 2014, “Risk and Return Trade-off in the U.S. Treasury Market,” SSRN library: <http://ssrn.com/abstract=2403483>.
- Giacoletti, M., K. T. Laursen, and K. J. Singleton, 2015, “Learning, Dispersion of Beliefs, and Risk Premiums in an Arbitrage-free Term Structure Model,” Stanford University Graduate School of Business Research Paper No. 15-45.
- Goyal, A., and I. Welch, 2008, “A Comprehensive Look at the Empirical Performance of Equity Premium Prediction,” *Review of Financial Studies*, 21, 1455–1508.
- Gürkaynak, R., B. Sack, and J. H. Wright, 2007, “The U.S. Treasury Yield Curve: 1961 to the Present,” *Journal of Monetary Economics*, 54, 2291–2304.
- Hansen, L. P., J. Heaton, J. Lee, and N. Roussanov, 2007, “Intertemporal Substitution and Risk Aversion,” in *Handbook of Econometrics*, ed. by J. J. Heckman, and E. Leamer. Elsevier, The Netherlands, vol. 6.
- Hansen, P. R., and A. Lunde, 2006, “Realized Variance and Market Microstructure Noise,” *Journal of Business and Economic Statistics*, 24, 127–161.
- Huang, J.-Z., and Z. Shi, 2012, “Determinants of Bond Risk Premia,” Working paper, Penn State University.
- Jostlin, S., M. Priebsch, and K. Singleton, 2014, “Risk Premiums in Dynamic Term Structure Models with Unspanned Macro Risks,” *Journal of Finance*, 3, 1197–1233.
- Kreps, D. M., and E. L. Porteus, 1978, “Temporal Resolution of Uncertainty and Dynamic Choice Theory,” *Econometrica*, 46, 185–200.
- Lettau, M., S. Ludvigson, and J. Wachter, 2008, “The Declining Equity Premium: What Role Does Macroeconomic Risk Play?,” *Review of Financial Studies*, 21, 1653–2991687.
- Li, H., and Z. Song, 2014, “Tail Risk in Fixed-Income Markets,” Working Paper, Cheung Kong Graduate School of Business and Federal Reserve Board.
- Ludvigson, S., and S. Ng, 2009, “Macro Factors in Bond Risk Premia,” *Review of Financial Studies*, 22, 5027–5067.
- Mele, A., and Y. Obayashi, 2012, “An Interest Rate Swap Volatility Index and Contract,” *Technical white paper*.
- Mueller, P., A. Vedolin, and H. Zhou, 2011, “Short-run Bond Risk Premia,” Working paper, London School of Economics and Federal Reserve Board.
- Newey, W., and K. West, 1994, “Automatic Lag Selection in Covariance Matrix Estimation,” *Review of Economic Studies*, 61(4), 631–653.
- Newey, W. K., and K. D. West, 1987, “A Simple Positive Semi-definite, Heteroskedasticity and Autocorrelation Consistent Covariance Matrix,” *Econometrica*, 55(3), 703–708.

- Piazzesi, M., and M. Shneider, 2007, “Equilibrium Yield Curves,” in *NBER Macroeconomics Annual*. MIT Press, Cambridge, vol. 21, pp. 389–472.
- Stambaugh, R., 1988, “The Information in Forward Rates: Implications for Models of the Term Structure,” *Journal of Financial Economics*, 21, 41–70.
- Tauchen, G., 2011, “Stochastic Volatility in General Equilibrium,” *Quarterly Journal of Finance*, 01(04), 707–731.
- Weil, P., 1989, “The Equity Premium Puzzle and the Riskfree Rate Puzzle,” *Journal of Monetary Economics*, 24, 401–421.
- Wright, J. H., 2011, “Term Premia and Inflation Uncertainty: Empirical Evidence from International Panel Dataset,” *American Economic Review*, 101, 1514–1534.
- Wright, J. H., and H. Zhou, 2009, “Bond Risk Premia and Realized Jump Risk,” *Journal of Banking and Finance*, 33(12), 2333 – 2345.
- Zhou, G., and Y. Zhu, 2012, “Volatility Trading: What is the Role of the Long-Run Volatility Component?,” *Journal of Financial and Quantitative Analysis*, 47(2), 273–307.
- , 2013, “The Long-run Risks Model: What Differences Can an Extra Volatility Factor Make?,” Working paper, http://papers.ssrn.com/sol3/papers.cfm?abstract_id=1403869.
- Zhou, H., 2009, “Variance Risk Premia, Asset Predictability Puzzles, and Macroeconomic Uncertainty,” Working paper, <http://ssrn.com/abstract=1400049>.
- , 2011, “Term Structure of Interest Rates with Inflation Uncertainty,” Technical Document, Federal Reserve Board.

Table 1: Summary Statistics

	Mean	SD	Min	Max	AR(1)		Mean	SD	Min	Max	AR(1)
A: Variance Risk Premium Measures and Forward Spreads											
IRVRP	1.54	0.91	0.58	3.86	0.97	FS 7y	2.18	1.65	-0.40	5.37	0.97
EVRP	0.17	0.23	-2.19	1.16	0.23	FS 8y	2.39	1.73	-0.37	5.72	0.97
FS 2y	0.46	0.53	-0.64	1.96	0.93	FS 9y	2.55	1.78	-0.39	5.82	0.98
FS 3y	0.88	0.87	-0.78	3.02	0.95	FS 10y	2.67	1.80	-0.43	5.72	0.98
FS 4y	1.27	1.15	-0.71	3.53	0.96	FS 15y	2.75	1.77	-0.64	5.69	0.98
FS 5y	1.62	1.37	-0.56	4.09	0.97	FS 20y	2.40	1.72	-0.80	5.35	0.97
FS 6y	1.93	1.53	-0.44	4.72	0.97						
B: Asset Returns											
	1-month holding period						3-month holding period				
2y	-3.18	2.16	-6.63	0.56	0.94		-2.52	1.93	-6.26	0.93	0.95
3y	-3.12	2.27	-6.72	1.04	0.88		-2.36	2.28	-7.36	2.99	0.90
4y	-3.07	2.41	-7.29	1.66	0.80		-2.21	2.68	-8.49	4.80	0.86
5y	-3.03	2.57	-7.99	2.36	0.72		-2.07	3.09	-9.47	6.34	0.83
6y	-2.98	2.75	-8.62	3.86	0.65		-1.93	3.48	-10.61	7.62	0.80
7y	-2.94	2.93	-9.18	5.40	0.59		-1.82	3.87	-11.73	8.69	0.78
8y	-2.91	3.13	-9.68	6.93	0.53		-1.72	4.24	-12.77	10.34	0.77
9y	-2.88	3.33	-10.13	8.39	0.47		-1.63	4.60	-13.75	12.40	0.75
10y	-2.86	3.53	-10.85	9.77	0.42		-1.56	4.96	-14.65	14.40	0.74
15y	-2.78	4.48	-15.64	14.89	0.26		-1.32	6.61	-18.83	23.38	0.70
20y	-2.74	5.31	-19.35	17.35	0.19		-1.19	8.23	-22.83	31.61	0.69
Equity	6.02	52.50	-204.90	130.50	0.09		6.08	31.79	-133.26	93.31	0.73
	6-month holding period						12-month holding period				
2y	-1.55	1.64	-5.19	2.62	0.94		0.23	1.18	-2.70	3.12	0.94
3y	-1.24	2.35	-6.56	5.79	0.90		0.86	2.33	-5.15	6.69	0.93
4y	-0.94	3.06	-7.78	8.58	0.88		1.46	3.34	-7.10	9.67	0.92
5y	-0.67	3.74	-8.84	10.95	0.86		2.01	4.24	-8.67	12.12	0.91
6y	-0.42	4.38	-9.86	12.93	0.85		2.50	5.07	-10.36	14.13	0.91
7y	-0.20	4.98	-11.11	14.55	0.84		2.93	5.85	-11.94	15.90	0.90
8y	-0.01	5.55	-12.28	15.88	0.83		3.30	6.58	-13.56	17.64	0.89
9y	0.15	6.09	-13.38	16.94	0.82		3.62	7.28	-15.09	19.14	0.89
10y	0.29	6.60	-14.41	17.91	0.82		3.88	7.95	-16.55	20.80	0.88
15y	0.72	8.96	-18.74	26.74	0.80		4.72	10.86	-23.18	30.68	0.87
20y	0.96	11.24	-26.64	35.58	0.80		5.16	13.55	-30.21	39.01	0.87
Equity	6.09	24.04	-102.99	68.33	0.86		6.16	18.11	-54.24	42.65	0.94

Note: This table presents summary statistics, including the mean, standard deviation (SD), minimum (Min), maximum (Max), and AR(1) coefficient, of our interest rate variance risk premium measure (IRVRP), the equity variance risk premium measure of [Bollerslev, Tauchen, and Zhou \(2009\)](#) using S&P 500 index options, and forward spreads equal to the difference between one-year forward rate τ years ahead and the one-year zero coupon yield (in Panel A), and of the Treasury and equity market excess returns (in Panel B). Both the forward spreads are excess returns are in percentage points. We consider forward spreads and Treasury excess returns with tenors of $\tau=2, 3, 4, 5, 6, 7, 8, 9, 10, 15,$ and 20 years. Four holding horizons of returns are included, 1-, 3-, 6-, and 12-months. Data is monthly and runs from March 1993 through February 2013.

Table 2: Univariate Predictive Regressions: Interest Rate Variance Risk Premium

	2y	3y	4y	5y	6y	7y	8y	9y	10y	15y	20y	Equity
1-month holding period												
IRVRP	0.871** (12.570)	0.836** (12.374)	0.794** (12.407)	0.752** (12.630)	0.711** (13.101)	0.672** (13.590)	0.635** (12.868)	0.600** (11.269)	0.568** (9.648)	0.437** (9.319)	0.346** (6.355)	0.068 (1.273)
R ²	0.759	0.699	0.631	0.565	0.505	0.451	0.403	0.360	0.322	0.191	0.120	0.005
3-month holding period												
IRVRP	0.792** (10.532)	0.682** (9.436)	0.595** (8.611)	0.531** (7.941)	0.484** (7.435)	0.447** (6.990)	0.416** (6.549)	0.388** (6.125)	0.364** (5.710)	0.259** (3.707)	0.172* (2.067)	0.125 (1.532)
R ²	0.627	0.465	0.354	0.282	0.234	0.199	0.173	0.151	0.132	0.067	0.030	0.016
6-month holding period												
IRVRP	0.621** (7.093)	0.455** (5.196)	0.369** (4.235)	0.320** (3.639)	0.289** (3.230)	0.267** (2.930)	0.249** (2.698)	0.234* (2.508)	0.221* (2.343)	0.156 (1.602)	0.089 (0.844)	0.179 (1.554)
R ²	0.386	0.207	0.136	0.102	0.083	0.071	0.062	0.055	0.049	0.024	0.008	0.032
12-month holding period												
IRVRP	-0.037 (-0.307)	0.019 (0.151)	0.060 (0.473)	0.089 (0.666)	0.109 (0.779)	0.122 (0.842)	0.130 (0.877)	0.135 (0.892)	0.136 (0.894)	0.112 (0.741)	0.057 (0.374)	0.254 ⁺ (1.725)
R ²	0.001	0.000	0.004	0.008	0.012	0.015	0.017	0.018	0.019	0.012	0.003	0.065

Note: This table reports the univariate regression

$$rx_{t+h}^{(\tau)} = \beta_0^{(\tau)} + \beta_1^{(\tau)}(h) \cdot \text{IRVRP}_t + \epsilon_{t+h}^{(\tau)},$$

where $rx_{t+h}^{(\tau)}$ is the h -period excess return for a Treasury security with tenors of τ ($=2, 3, 4, 5, 6, 7, 8, 9, 10, 15,$ and 20) years, and the equity market portfolio with $\tau = \infty$ tenor, and IRVRP_t is the interest rate variance risk premium measure. The t -statistics presented in parentheses are calculated using Newey and West (1987) standard errors with the optimal lag length determined according to Newey and West (1994). All variables are standardized to have mean zero and a standard deviation of one. Data is monthly and runs from March 1993 through February 2013. Significance levels: ** for $p < 0.01$, * for $p < 0.05$, and ⁺ for $p < 0.1$, where p is the p -value.

Table 3: Univariate Predictive Regressions: Equity Variance Risk Premium

	2y	3y	4y	5y	6y	7y	8y	9y	10y	15y	20y	Equity
1-month holding period												
EVRP	0.023 (0.255)	0.009 (0.101)	-0.010 (-0.116)	-0.031 (-0.388)	-0.052 (-0.688)	-0.073 (-0.995)	-0.092 (-1.294)	-0.109 (-1.579)	-0.124+ (-1.845)	-0.173** (-2.946)	-0.199** (-3.762)	0.265** (5.727)
R ²	0.001	0.000	0.000	0.001	0.003	0.005	0.008	0.012	0.015	0.030	0.039	0.070
3-month holding period												
EVRP	0.012 (0.130)	-0.017 (-0.221)	-0.048 (-0.774)	-0.077 (-1.115)	-0.102 (-1.631)	-0.123* (-2.075)	-0.139* (-2.439)	-0.151** (-2.725)	-0.159** (-2.948)	-0.164** (-3.597)	-0.156** (-3.876)	0.351** (8.673)
R ²	0.000	0.000	0.002	0.006	0.010	0.015	0.019	0.023	0.025	0.027	0.024	0.123
6-month holding period												
EVRP	0.014 (0.139)	-0.020 (-0.224)	-0.052 (-0.640)	-0.079 (-1.088)	-0.103 (-1.525)	-0.122+ (-1.928)	-0.137* (-2.297)	-0.147** (-2.800)	-0.154** (-2.940)	-0.150* (-2.453)	-0.128+ (-1.849)	0.274** (5.286)
R ²	0.000	0.000	0.003	0.006	0.011	0.015	0.019	0.022	0.024	0.023	0.016	0.075
12-month holding period												
EVRP	0.032 (0.342)	0.015 (0.166)	0.004 (0.045)	-0.009 (-0.101)	-0.021 (-0.215)	-0.032 (-0.336)	-0.042 (-0.459)	-0.050 (-0.563)	-0.056 (-0.650)	-0.066 (-0.872)	-0.058 (-0.859)	0.156** (2.576)
R ²	0.001	0.000	0.000	0.000	0.000	0.001	0.002	0.003	0.003	0.004	0.003	0.024

Note: This table reports the univariate regression

$$rx_{t+h}^{(\tau)} = \beta_0^{(\tau)} + \beta_1^{(\tau)}(h) \cdot \text{EVRP}_t + \epsilon_{t+h}^{(\tau)}$$

where $rx_{t+h}^{(\tau)}$ is the h -period excess return for a Treasury security with tenors of τ ($=2, 3, 4, 5, 6, 7, 8, 9, 10, 15$, and 20) years, and the equity market portfolio with $\tau = \infty$ tenor, and EVRP_t is the equity variance risk premium measure constructed by [Bollerslev, Tauchen, and Zhou \(2009\)](#) using S&P 500 index options. The t -statistics presented in parentheses are calculated using [Newey and West \(1987\)](#) standard errors with the optimal lag length determined according to [Newey and West \(1994\)](#). All variables are standardized to have mean zero and a standard deviation of one. Data is monthly and runs from March 1993 through February 2013. Significance levels: ** for $p < 0.01$, * for $p < 0.05$, and + for $p < 0.1$, where p is the p -value.

Table 4: Multivariate Predictive Regressions: Interest Rate and Equity Variance Risk Premium

	2y	3y	4y	5y	6y	7y	8y	9y	10y	15y	20y	Equity
1-month holding period												
IRVRP	0.871** (12.384)	0.836** (12.238)	0.795** (12.481)	0.753** (12.731)	0.713** (12.932)	0.674** (13.068)	0.638** (13.100)	0.604** (13.010)	0.571** (12.796)	0.442** (10.353)	0.352** (5.346)	0.061 (1.221)
EVRP	-0.001 (-0.043)	-0.014 (-0.513)	-0.032 (-1.015)	-0.051 (-1.398)	-0.072+ (-1.697)	-0.092* (-1.960)	-0.110* (-2.200)	-0.126* (-2.423)	-0.140** (-2.632)	-0.185** (-3.454)	-0.208** (-3.210)	0.263** (5.999)
R ²	0.759	0.699	0.632	0.568	0.510	0.459	0.415	0.376	0.342	0.225	0.163	0.074
3-month holding period												
IRVRP	0.792** (10.606)	0.683** (9.458)	0.596** (8.613)	0.534** (7.842)	0.487** (7.106)	0.450** (6.597)	0.420** (6.135)	0.393** (5.903)	0.369** (5.596)	0.264** (3.689)	0.176* (2.105)	0.116 (1.645)
EVRP	-0.010 (-0.361)	-0.036 (-1.341)	-0.064* (-2.366)	-0.092** (-3.055)	-0.116** (-3.382)	-0.136** (-3.606)	-0.151** (-3.722)	-0.162** (-3.896)	-0.169** (-4.011)	-0.171** (-4.065)	-0.161** (-3.936)	0.348** (7.839)
R ²	0.627	0.466	0.358	0.290	0.247	0.218	0.195	0.177	0.161	0.096	0.055	0.137
6-month holding period												
IRVRP	0.621** (7.061)	0.456** (4.995)	0.371** (3.937)	0.322** (3.305)	0.292** (2.914)	0.270** (2.732)	0.253** (2.626)	0.238* (2.469)	0.225* (2.308)	0.160 (1.595)	0.093 (0.860)	0.172+ (1.763)
EVRP	-0.003 (-0.055)	-0.033 (-0.626)	-0.062 (-1.216)	-0.088+ (-1.743)	-0.111* (-2.204)	-0.130** (-2.621)	-0.144** (-2.997)	-0.154** (-3.234)	-0.160** (-3.354)	-0.155** (-2.779)	-0.130+ (-1.880)	0.269** (4.616)
R ²	0.386	0.208	0.140	0.110	0.096	0.088	0.083	0.078	0.074	0.048	0.025	0.105
12-month holding period												
IRVRP	-0.038 (-0.310)	0.018 (0.145)	0.060 (0.459)	0.089 (0.648)	0.109 (0.767)	0.123 (0.843)	0.132 (0.878)	0.136 (0.894)	0.138 (0.896)	0.113 (0.745)	0.058 (0.381)	0.250+ (1.843)
EVRP	0.033 (0.321)	0.015 (0.151)	0.002 (0.021)	-0.011 (-0.120)	-0.024 (-0.269)	-0.036 (-0.418)	-0.046 (-0.555)	-0.054 (-0.675)	-0.060 (-0.776)	-0.069 (-1.003)	-0.060 (-0.910)	0.149* (2.014)
R ²	0.002	0.001	0.004	0.008	0.012	0.016	0.019	0.021	0.022	0.017	0.007	0.087

Note: This table reports the multivariate regression:

$$rx_{t+h}^{(\tau)} = \beta_0^{(\tau)} + \beta_1^{(\tau)}(h) \cdot \text{IRVRP}_t + \beta_2^{(\tau)}(h) \cdot \text{EVRP}_t + \epsilon_{t+h}^{(\tau)},$$

where $rx_{t+h}^{(\tau)}$ is the h -period excess return for a Treasury security with tenors of τ ($=2, 3, 4, 5, 6, 7, 8, 9, 10, 15, \text{ and } 20$) years, and the equity market portfolio with $\tau = \infty$ tenor, IRVRP_t is the interest rate variance risk premium measure, and EVRP_t is the equity variance risk premium measure constructed by [Bollerslev, Tauchen, and Zhou \(2009\)](#) using S&P 500 index options. The t -statistics presented in parentheses are calculated using [Newey and West \(1987\)](#) standard errors with the optimal lag length determined according to [Newey and West \(1994\)](#). All variables are standardized to have mean zero and a standard deviation of one. Data is monthly and runs from March 1993 through February 2013. Significance levels: ** for $p < 0.01$, * for $p < 0.05$, and + for $p < 0.1$, where p is the p -value.

Table 5: Univariate Predictive Regressions: Forward Spread

	2y	3y	4y	5y	6y	7y	8y	9y	10y	15y	20y	Equity
1-month holding period												
FS	0.409**	0.612**	0.688**	0.706**	0.698**	0.678**	0.652**	0.624**	0.594**	0.459**	0.366**	0.039
	(3.246)	(7.997)	(9.152)	(10.639)	(11.851)	(12.142)	(11.975)	(11.330)	(10.675)	(8.233)	(6.398)	(0.777)
R ²	0.167	0.374	0.474	0.499	0.488	0.460	0.425	0.389	0.353	0.210	0.134	0.002
3-month holding period												
FS	0.408**	0.548**	0.568**	0.553**	0.528**	0.500**	0.473**	0.447**	0.421**	0.317**	0.252**	0.067
	(3.122)	(4.657)	(5.712)	(6.287)	(6.439)	(6.291)	(5.991)	(5.640)	(5.291)	(3.968)	(3.219)	(0.830)
R ²	0.167	0.300	0.323	0.305	0.278	0.250	0.224	0.200	0.177	0.100	0.064	0.004
6-month holding period												
FS	0.360*	0.440**	0.438**	0.420**	0.399**	0.378**	0.357**	0.338**	0.319**	0.248*	0.208*	0.084
	(2.217)	(3.020)	(3.371)	(3.548)	(3.569)	(3.483)	(3.340)	(3.175)	(3.008)	(2.361)	(1.975)	(0.845)
R ²	0.129	0.193	0.192	0.176	0.159	0.143	0.128	0.114	0.102	0.061	0.043	0.007
12-month holding period												
FS	0.049	0.100	0.155	0.198	0.225	0.240 ⁺	0.246 ⁺	0.246 ⁺	0.241 ⁺	0.204	0.181	0.199
	(0.248)	(0.521)	(0.890)	(1.244)	(1.519)	(1.697)	(1.786)	(1.810)	(1.793)	(1.503)	(1.265)	(1.496)
R ²	0.002	0.010	0.024	0.039	0.051	0.058	0.061	0.060	0.058	0.042	0.033	0.039

Note: This table reports the univariate regression:

$$rx_{t+h}^{(\tau)} = \beta_0^{(\tau)} + \beta_1^{(\tau)}(h) \cdot FS_t^{(\tau)} + \epsilon_{t+h}^{(\tau)},$$

where $rx_{t+h}^{(\tau)}$ is the h -period excess return for a Treasury security with tenors of τ ($=2, 3, 4, 5, 6, 7, 8, 9, 10, 15,$ and 20) years, and the equity market portfolio with $\tau = \infty$ tenor, and $FS_t^{(\tau)}$ is the forward spread between the one-year forward rate τ years ahead and the one-year zero coupon yield. The t -statistics presented in parentheses are calculated using [Newey and West \(1987\)](#) standard errors with the optimal lag length determined according to [Newey and West \(1994\)](#). All variables are standardized to have mean zero and a standard deviation of one. Data is monthly and runs from March 1993 through February 2013. Significance levels: ** for $p < 0.01$, * for $p < 0.05$, and ⁺ for $p < 0.1$, where p is the p -value.

Table 6: Multivariate Predictive Regressions: Interest Rate Variance Risk Premium and Forward Spread

	2y	3y	4y	5y	6y	7y	8y	9y	10y	15y	20y	Equity
1-month holding period												
IRVRP	0.830** (14.542)	0.704** (11.418)	0.597** (8.106)	0.509** (5.998)	0.439** (4.762)	0.382** (4.005)	0.336** (3.471)	0.300** (3.127)	0.272** (2.890)	0.209** (2.619)	0.172* (2.131)	0.083 (0.816)
FS	0.290** (4.592)	0.339** (5.512)	0.369** (5.545)	0.389** (5.392)	0.401** (5.282)	0.405** (5.205)	0.403** (5.111)	0.396** (5.041)	0.385** (4.903)	0.300** (4.072)	0.243** (3.238)	-0.021 (-0.217)
R ²	0.842	0.796	0.728	0.658	0.592	0.531	0.476	0.427	0.383	0.228	0.148	0.005
3-month holding period												
IRVRP	0.749** (11.286)	0.552** (6.424)	0.407** (3.777)	0.305* (2.443)	0.233 ⁺ (1.704)	0.181 (1.270)	0.144 (0.977)	0.117 (0.784)	0.098 (0.655)	0.042 (0.302)	-0.019 (-0.136)	0.159 (1.225)
FS	0.301** (3.319)	0.333** (3.252)	0.350** (3.077)	0.363** (2.961)	0.370** (2.880)	0.371** (2.756)	0.367** (2.668)	0.358* (2.567)	0.346* (2.456)	0.285* (2.125)	0.266* (2.007)	-0.047 (-0.347)
R ²	0.715	0.559	0.441	0.362	0.308	0.266	0.233	0.205	0.181	0.101	0.064	0.017
6-month holding period												
IRVRP	0.582** (6.707)	0.334** (2.916)	0.189 (1.339)	0.095 (0.592)	0.033 (0.188)	-0.008 (-0.046)	-0.035 (-0.182)	-0.051 (-0.259)	-0.060 (-0.302)	-0.079 (-0.415)	-0.124 (-0.664)	0.246 ⁺ (1.942)
FS	0.276 ⁺ (1.959)	0.310 ⁺ (1.940)	0.337* (1.969)	0.361* (2.006)	0.377* (2.023)	0.384* (2.008)	0.383* (1.961)	0.376 ⁺ (1.892)	0.365 ⁺ (1.815)	0.308 (1.555)	0.296 (1.509)	-0.093 (-0.633)
R ²	0.461	0.288	0.217	0.182	0.160	0.143	0.128	0.115	0.103	0.064	0.050	0.036
12-month holding period												
IRVRP	-0.045 (-0.372)	-0.024 (-0.162)	-0.032 (-0.177)	-0.056 (-0.271)	-0.082 (-0.361)	-0.103 (-0.421)	-0.116 (-0.450)	-0.121 (-0.453)	-0.120 (-0.442)	-0.106 (-0.404)	-0.152 (-0.618)	0.230 (1.384)
FS	0.056 (0.281)	0.109 (0.499)	0.172 (0.742)	0.232 (0.960)	0.281 (1.121)	0.314 (1.219)	0.332 (1.260)	0.337 (1.262)	0.334 (1.241)	0.285 (1.108)	0.290 (1.121)	0.033 (0.188)
R ²	0.004	0.011	0.025	0.041	0.054	0.063	0.067	0.067	0.064	0.046	0.044	0.065

Note: This table reports the univariate regression:

$$r x_{t+h}^{(\tau)} = \beta_0^{(\tau)} + \beta_1^{(\tau)}(h) \cdot \text{IRVRP}_t + \beta_2^{(\tau)}(h) \cdot \text{FS}_t^{(\tau)} + \epsilon_{t+h}^{(\tau)}$$

where $r x_{t+h}^{(\tau)}$ is the h -period excess return for a Treasury security with tenors of τ ($=2, 3, 4, 5, 6, 7, 8, 9, 10, 15,$ and 20) years, and the equity market portfolio with $\tau = \infty$ tenor, IRVRP_t is the measure of interest rate variance risk premium, and $\text{FS}_t^{(\tau)}$ is the forward spread between the one-year forward rate τ years ahead and the one-year zero coupon yield. The t -statistics presented in parentheses are calculated using Newey and West (1987) standard errors with the optimal lag length determined according to Newey and West (1994). All variables are standardized to have mean zero and a standard deviation of one. Data is monthly and runs from March 1993 through February 2013. Significance levels: ** for $p < 0.01$, * for $p < 0.05$, and ⁺ for $p < 0.1$, where p is the p -value.

Table 7: Subsample Analysis

	2y	3y	4y	5y	6y	7y	8y	9y	10y	15y	20yy	Equity
A: Sample Period: 1993 - 2003 (N=129)												
1-month holding period												
IRVRP	1.290** (10.013)	1.228** (10.074)	1.150** (9.656)	1.069** (9.213)	0.991** (6.931)	0.919** (8.193)	0.854** (8.774)	0.794** (9.772)	0.741** (9.387)	0.550** (7.666)	0.432** (6.209)	0.125 (1.100)
R ²	0.662	0.576	0.488	0.411	0.349	0.299	0.258	0.225	0.198	0.111	0.067	0.004
3-month holding period												
IRVRP	1.226** (9.278)	1.052** (11.816)	0.892** (9.789)	0.767** (7.986)	0.670** (6.662)	0.594** (5.697)	0.533** (4.970)	0.481** (4.403)	0.438** (3.946)	0.291* (2.525)	0.195 ⁺ (1.705)	0.166 (0.891)
R ²	0.517	0.349	0.241	0.175	0.133	0.105	0.084	0.069	0.058	0.026	0.013	0.009
6-month holding period												
IRVRP	1.004** (6.438)	0.713** (4.770)	0.533** (3.373)	0.420** (2.604)	0.341* (2.108)	0.284 ⁺ (1.757)	0.240 (1.492)	0.205 (1.282)	0.176 (1.109)	0.078 (0.508)	0.005 (0.035)	0.147 (0.574)
R ²	0.287	0.135	0.075	0.047	0.031	0.022	0.016	0.012	0.009	0.002	0.000	0.008
12-month holding period												
IRVRP	0.061 (0.248)	0.039 (0.162)	0.033 (0.144)	0.028 (0.133)	0.025 (0.123)	0.021 (0.110)	0.017 (0.092)	0.012 (0.069)	0.007 (0.039)	-0.032 (-0.195)	-0.085 (-0.527)	0.247 (0.808)
R ²	0.001	0.000	0.000	0.000	0.000	0.000	0.000	0.000	0.000	0.000	0.002	0.019
B: Sample Period: 2004 - 2013 (N=110)												
1-month holding period												
IRVRP	0.752** (9.136)	0.721** (8.848)	0.687** (8.597)	0.653** (8.445)	0.622** (8.359)	0.592** (8.282)	0.564** (8.165)	0.536** (7.978)	0.509** (7.717)	0.389** (5.723)	0.294** (3.679)	0.119 ⁺ (1.911)
R ²	0.798	0.733	0.656	0.580	0.509	0.445	0.387	0.337	0.294	0.156	0.087	0.017
3-month holding period												
IRVRP	0.677** (7.099)	0.577** (5.425)	0.501** (4.543)	0.450** (4.102)	0.414** (3.875)	0.387** (3.738)	0.365** (3.621)	0.345** (3.484)	0.326** (3.308)	0.224* (2.029)	0.122 (0.893)	0.230* (2.164)
R ²	0.666	0.480	0.353	0.276	0.228	0.194	0.167	0.146	0.127	0.056	0.015	0.054
6-month holding period												
IRVRP	0.547** (5.300)	0.386** (2.771)	0.305* (2.133)	0.263 ⁺ (1.911)	0.239 ⁺ (1.955)	0.224 (1.590)	0.214 (1.487)	0.205 (1.454)	0.196 (1.420)	0.136 (0.986)	0.056 (0.357)	0.344* (2.023)
R ²	0.440	0.220	0.134	0.097	0.078	0.067	0.059	0.053	0.048	0.021	0.003	0.110
12-month holding period												
IRVRP	0.023 (0.116)	0.033 (0.239)	0.058 (0.341)	0.084 (0.562)	0.107 (0.780)	0.126 (0.684)	0.141 (0.709)	0.152 (0.754)	0.159 (0.804)	0.141 (0.751)	0.068 (0.350)	0.452** (3.517)
R ²	0.001	0.002	0.006	0.012	0.018	0.025	0.030	0.034	0.036	0.025	0.005	0.216

Note: This table presents results of the univariate regression (7) for two subsample periods: March 1993 to December 2003 and January 2004 to February 2013. The t -statistics presented in parentheses are calculated using [Newey and West \(1987\)](#) standard errors with the optimal lag length determined according to [Newey and West \(1994\)](#). All variables are standardized to have mean zero and a standard deviation of one. Data is monthly and runs from March 1993 through February 2013. Significance levels: ** for $p < 0.01$, * for $p < 0.05$, and ⁺ for $p < 0.1$, where p is the p -value.

Table 8: Realized Variance based on High-Frequency Swap Rates

	2y	3y	4y	5y	6y	7y	8y	9y	10y	15y	20y	Equity
1-month holding period												
IRVRP ^{5-min}	0.600**	0.566**	0.531**	0.499**	0.469**	0.442**	0.416**	0.392**	0.368**	0.263**	0.181 ⁺	0.115
	(4.992)	(4.751)	(4.568)	(4.432)	(4.188)	(3.992)	(3.898)	(3.698)	(3.566)	(2.667)	(1.695)	(1.373)
R ²	0.505	0.434	0.363	0.303	0.254	0.214	0.181	0.154	0.131	0.061	0.028	0.013
3-month holding period												
IRVRP ^{5-min}	0.505**	0.401**	0.326*	0.277 ⁺	0.245 ⁺	0.223 ⁺	0.205	0.189	0.174	0.087	-0.007	0.255*
	(3.503)	(2.690)	(2.196)	(1.928)	(1.789)	(1.698)	(1.622)	(1.542)	(1.461)	(0.763)	(-0.060)	(2.537)
R ²	0.348	0.204	0.127	0.088	0.067	0.054	0.044	0.037	0.031	0.007	0.000	0.055
6-month holding period												
IRVRP ^{5-min}	0.373*	0.213	0.130	0.085	0.058	0.042	0.031	0.023	0.015	-0.040	-0.118	0.377**
	(2.156)	(1.237)	(0.774)	(0.522)	(0.376)	(0.282)	(0.217)	(0.161)	(0.105)	(-0.321)	(-0.807)	(2.816)
R ²	0.177	0.054	0.020	0.008	0.004	0.002	0.001	0.001	0.000	0.002	0.014	0.116
12-month holding period												
IRVRP ^{5-min}	-0.069	-0.066	-0.061	-0.057	-0.052	-0.047	-0.043	-0.041	-0.040	-0.074	-0.153	0.453**
	(-0.365)	(-0.364)	(-0.350)	(-0.336)	(-0.320)	(-0.321)	(-0.595)	(-0.266)	(-0.237)	(-0.417)	(-0.831)	(3.870)
R ²	0.006	0.006	0.005	0.004	0.004	0.003	0.002	0.002	0.002	0.006	0.025	0.198

Note: This table presents results of the univariate regression (7) using the alternative measure of interest rate variance risk premium, IRVRP^{5-min}. The t -statistics presented in parentheses are calculated using Newey and West (1987) standard errors with the optimal lag length determined according to Newey and West (1994). All variables are standardized to have mean zero and a standard deviation of one. Data is monthly and runs from March 1993 through February 2013. Significance levels: ** for $p < 0.01$, * for $p < 0.05$, and ⁺ for $p < 0.1$, where p is the p -value.

Table 9: Bond Returns using the Fama-Bliss and Fama Maturity Portfolio Dataset

		A: Fama-Bliss			
		2y	3y	4y	5y
<hr/>					
1-month holding period					
IRVRP		0.888** (11.792)	0.850** (11.686)	0.802** (11.693)	0.768** (13.364)
R ²		0.747	0.685	0.610	0.559
<hr/>					
3-month holding period					
IRVRP		0.816** (10.652)	0.696** (9.624)	0.602** (8.315)	0.552** (8.119)
R ²		0.612	0.445	0.333	0.280
<hr/>					
6-month holding period					
IRVRP		0.648** (7.607)	0.476** (5.759)	0.397** (4.697)	0.369** (4.458)
R ²		0.372	0.201	0.140	0.121
<hr/>					
12-month holding period					
IRVRP		0.028 (0.225)	0.073 (0.586)	0.139 (1.105)	0.216 ⁺ (1.709)
R ²		0.001	0.004	0.015	0.037
<hr/>					
B: Fama Maturity Portfolios					
		$\tau < 2y$	$\tau < 5y$	$5y \leq \tau < 10y$	$\tau \geq 10y$
IRVRP		0.886** (12.325)	0.821** (13.319)	0.787** (13.719)	0.614** (11.546)
R ²		0.784	0.674	0.620	0.377

Note: This table presents results of the univariate regression (7) using two alternative Treasury datasets to calculate the Treasury excess returns. The first is the Fama-Bliss discount bond database from CRSP, which contains Treasury notes with maturities of 1, 2, 3, 4, and 5 years, while the second is the Fama dataset from CRSP, which contains actually traded Treasury securities combined into portfolios of different maturity buckets. The t -statistics presented in parentheses are calculated using Newey and West (1987) standard errors with the optimal lag length determined according to Newey and West (1994). All variables are standardized to have mean zero and a standard deviation of one. Data is monthly and runs from March 1993 through February 2013. Significance levels: ** for $p < 0.01$, * for $p < 0.05$, and + for $p < 0.1$, where p is the p -value.

Table 10: Additional Controls

	2y	3y	4y	5y	6y	7y	8y	9y	10y	15y	20y	Equity
A: 1-month holding period												
IRVRP	0.872** (12.066)	0.845** (12.726)	0.816** (13.441)	0.788** (13.967)	0.761** (14.148)	0.735** (13.946)	0.709** (13.456)	0.683** (12.693)	0.657** (11.749)	0.539** (8.656)	0.449** (6.187)	IRVRP (2.075)
CP	4.519* (2.082)	5.425* (2.533)	6.302** (2.981)	7.083** (3.343)	7.718** (3.562)	8.189** (3.637)	8.500** (3.608)	8.673** (3.511)	8.734** (3.391)	8.187** (2.820)	7.438* (2.367)	d/p (1.754)
GRO	0.084 (0.965)	0.084 (0.945)	0.093 (1.031)	0.106 (1.166)	0.119 (1.321)	0.131 (1.476)	0.141 (1.621)	0.149 ⁺ (1.756)	0.155 ⁺ (1.883)	0.165* (2.283)	0.163 ⁺ (1.779)	e/p (-0.199)
INF	-0.241 (-1.078)	-0.233 (-1.113)	-0.215 (-1.104)	-0.193 (-1.056)	-0.168 (-0.978)	-0.143 (-0.881)	-0.120 (-0.776)	-0.100 (-0.669)	-0.082 (-0.568)	-0.025 (-0.177)	0.003 (0.019)	NTIS (0.565)
R ²	0.778	0.722	0.660	0.600	0.546	0.496	0.451	0.410	0.372	0.236	0.158	DS (-1.132)
B: 3-month holding period												
IRVRP	0.789** (9.541)	0.698** (7.929)	0.637** (6.729)	0.598** (6.554)	0.574** (6.129)	0.556** (5.429)	0.540** (5.470)	0.525** (5.248)	0.509** (5.034)	0.415** (3.895)	0.320** (2.745)	IRVRP (1.956)
CP	6.147* (2.191)	8.000** (2.644)	9.417** (3.071)	10.486** (3.529)	11.254** (3.888)	11.746** (4.224)	11.993** (4.527)	12.036** (4.619)	11.914** (4.627)	10.018** (4.055)	7.884** (3.219)	d/p (1.754)
GRO	0.043 (0.411)	0.059 (0.536)	0.091 (0.834)	0.124 (1.018)	0.154 (1.354)	0.177 ⁺ (1.720)	0.195* (2.053)	0.209* (2.265)	0.218* (2.421)	0.230* (2.465)	0.225* (2.131)	e/p (-0.265)
INF	-0.248 (-1.141)	-0.241 (-1.149)	-0.217 (-1.030)	-0.185 (-0.742)	-0.149 (-0.579)	-0.113 (-0.518)	-0.079 (-0.396)	-0.048 (-0.243)	-0.020 (-0.105)	0.067 (0.363)	0.101 (0.564)	NTIS (1.049)
R ²	0.659	0.514	0.417	0.357	0.318	0.290	0.267	0.247	0.227	0.140	0.081	DS (-1.282)
												Equity (0.129)

	2y	3y	4y	5y	6y	7y	8y	9y	10y	15y	20y	Equity
C: 6-month holding period												
IRVRP	0.599** (5.071)	0.461** (3.888)	0.408** (3.078)	0.390** (2.891)	0.386** (2.821)	0.387** (2.803)	0.389** (2.799)	0.389** (2.793)	0.386** (2.776)	0.341* (2.447)	0.269 ⁺ (1.856)	IRVRP (1.686)
CP	9.119* (2.257)	11.384** (2.773)	12.868** (2.917)	13.948** (3.336)	14.709** (3.759)	15.180** (4.148)	15.395** (4.466)	15.392** (4.681)	15.212** (4.776)	12.831** (3.903)	10.021** (2.636)	d/p (1.447)
GRO	-0.073 (-0.475)	-0.027 (-0.170)	0.036 (0.284)	0.091 (0.784)	0.137 (1.261)	0.173 ⁺ (1.700)	0.200* (2.078)	0.221* (2.372)	0.236* (2.570)	0.264** (2.576)	0.272* (2.346)	e/p (0.132)
INF	-0.264 (-1.064)	-0.268 (-0.823)	-0.255 (-0.911)	-0.229 (-0.824)	-0.195 (-0.707)	-0.158 (-0.578)	-0.121 (-0.447)	-0.085 (-0.319)	-0.052 (-0.198)	0.062 (0.247)	0.111 (0.464)	NTIS (1.591)
R ²	0.474	0.321	0.264	0.242	0.231	0.225	0.218	0.211	0.201	0.139	0.088	DS (1.5334)
D: 12-month holding period												
IRVRP	-0.021 (-0.109)	0.041 (0.219)	0.113 (0.617)	0.176 (0.990)	0.230 (1.328)	0.273 (1.623)	0.307 ⁺ (1.873)	0.333* (2.078)	0.351* (2.238)	0.367* (2.477)	0.323* (2.143)	IRVRP (1.494)
CP	14.480** (2.770)	16.796** (3.155)	18.837** (3.849)	20.508** (4.564)	21.750** (5.204)	22.575** (5.688)	23.033** (5.983)	23.196** (6.104)	23.135** (6.092)	21.181** (5.232)	18.785** (4.277)	d/p (1.673)
GRO	-0.109 (-0.610)	-0.018 (-0.140)	0.084 (0.813)	0.174* (2.006)	0.248** (3.263)	0.308** (4.279)	0.356** (4.820)	0.393** (4.941)	0.422** (4.837)	0.512** (4.146)	0.578** (4.274)	e/p (1.345)
INF	-0.203 (-0.425)	-0.368 (-0.799)	-0.437 (-0.950)	-0.458 (-1.011)	-0.450 (-1.014)	-0.426 (-0.982)	-0.393 (-0.928)	-0.359 (-0.862)	-0.325 (-0.794)	-0.214 (-0.545)	-0.187 (-0.491)	NTIS (2.179)
R ²	0.203	0.240	0.276	0.310	0.338	0.359	0.370	0.375	0.373	0.323	0.276	DS (1.555)

Note: This table presents results of the multivariate regression:

$$r_{t+h}^{(\tau)} = \beta_0^{(\tau)} + \beta_1^{(\tau)}(h) \cdot \text{IRVRP}_t + \beta_2^{(\tau)}(h) \cdot \text{Factor}_t + \epsilon_{t+h}^{(\tau)},$$

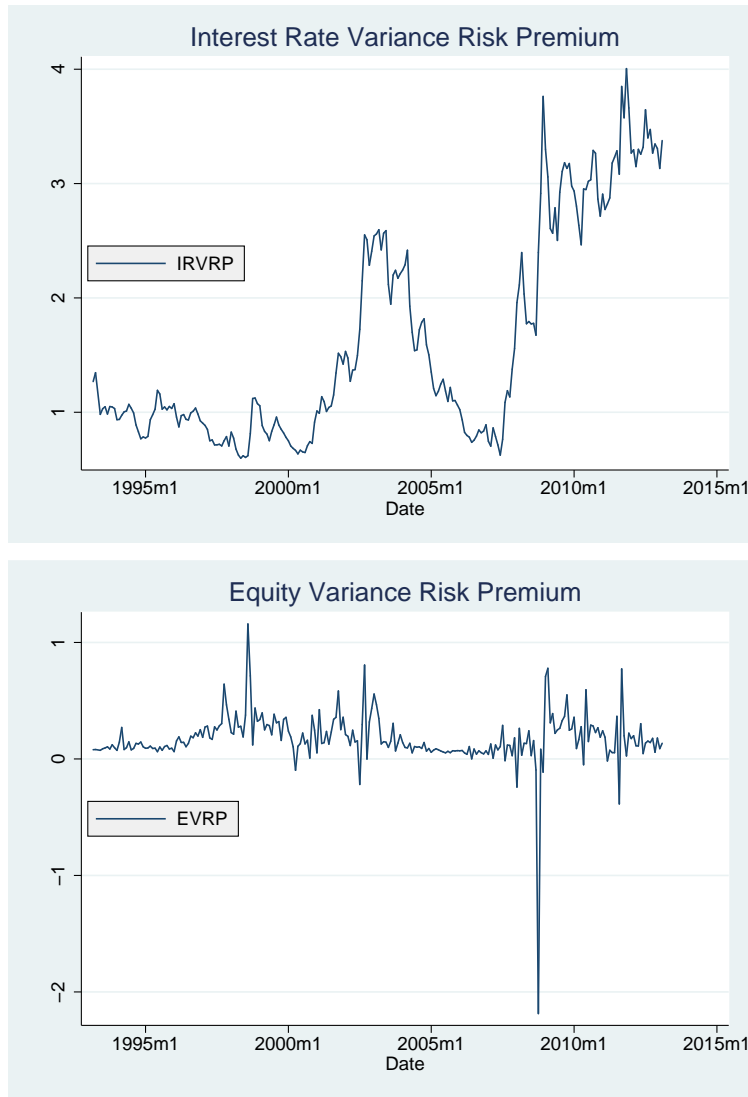
where $r_{t+h}^{(\tau)}$ is the h -period excess return for a Treasury security with tenors of τ ($=2, 3, 4, 5, 6, 7, 8, 9, 10, 15$, and 20) years, and the equity market portfolio with $\tau = \infty$ tenor, and IRVRP_t is the measure of interest rate variance risk premium. For Treasuries, the Factor_t contains the CP variable as well as two macro factors GRO and INF. For the equity, Factor_t contains the log dividend price ratio (d/p), the log earnings price ratio (e/p), the net equity expansion (NTIS) factor of [Goyal and Welch \(2008\)](#) (obtain from Amit Goyal's webpage), and the default spread (DS). The t -statistics presented in parentheses are calculated using [Newey and West \(1987\)](#) standard errors with the optimal lag length determined according to [Newey and West \(1994\)](#). All variables are standardized to have mean zero and a standard deviation of one. Data is monthly and runs from March 1993 through February 2013. Significance levels: ** for $p < 0.01$, * for $p < 0.05$, and ⁺ for $p < 0.1$, where p is the p -value.

Table 11: Model calibration

Type	Parameters	BY	BTZ	GSZ
<u>Panel A: Real economy dynamics</u>				
Preferences	δ	0.997	0.997	0.997
	γ	10	10	8
	ψ	1.5	1.5	1.5
Endowment	μ_g	0.0015	0.0015	0.0015
	ρ_x	0.979	0	0.979
	ϕ_e	0.001	0	0.001
	a_σ	1.20463e-05	1.20463e-05	1.20463e-05
	ρ_σ	0.978	0.978	0.978
Uncertainty	a_q		2e-07	2e-10
	ρ_q		0.8	0.8
	ϕ_q		0.001	0.0001
<u>Panel B: Inflation dynamics</u>				
Constant	a_π			8.33333e-05
Persistence	ρ_π			0.95
Autonomous	ϕ_π			0.0013
Consumption	$\phi_{\pi g}$			-0.0385
Uncertainty	$\phi_{\pi\sigma}$			28.5044
<u>Panel C: Campbell-Shiller constants</u>				
	κ_0	0.3251	0.3251	0.3251
	κ_1	0.9	0.9	0.9

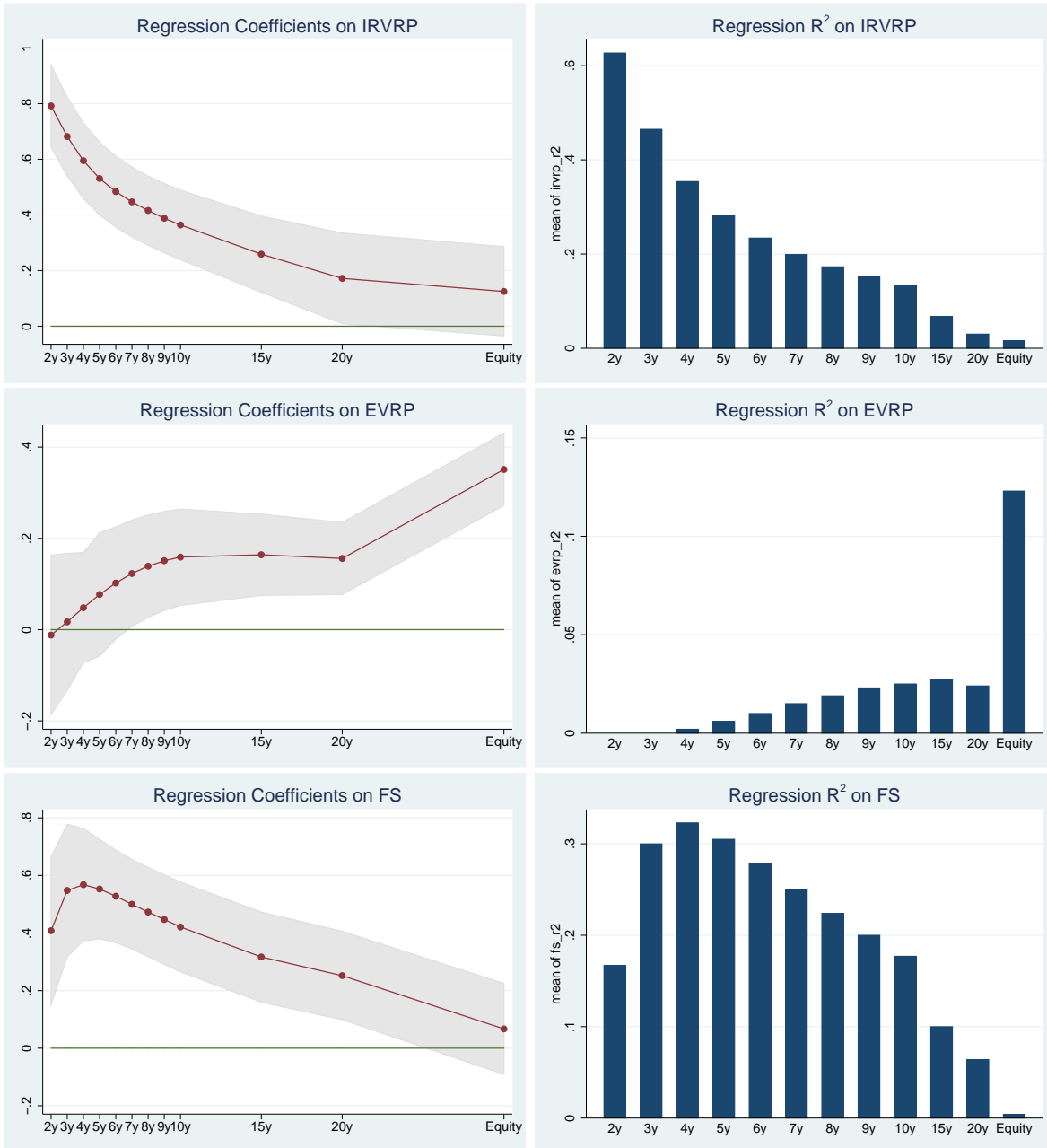
Note: This table reports the calibrated parameters used in previous studies and in our paper. Column “BY” refers to the choice of parameters in [Bansal and Yaron \(2004\)](#), column “BTZ” — to that in [Bollerslev, Tauchen, and Zhou \(2009\)](#), and column “GSZ” refers to our choice of parameters.

Figure 1: Time series of interest rate and equity variance risk premium



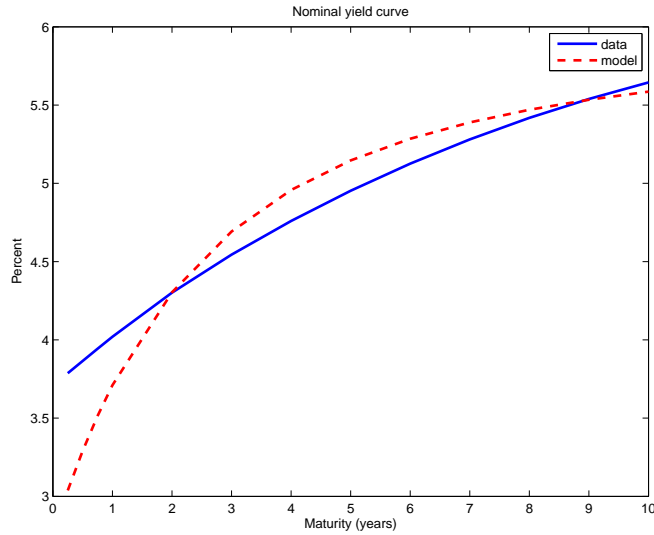
This figure plots monthly series of the interest rate variance risk premium (top panel) and equity variance risk premium (bottom panel). The former is computed as the simple average of the five individual interest rate variance risk premium measures on 1-, 2-, 5-, 10-, and 20-year tenors based on 12-month swaptions on corresponding tenors, while the latter is based on S&P 500 index options, as in [Bollerslev, Tauchen, and Zhou \(2009\)](#). The sample period is March 1993 – February 2013.

Figure 2: Univariate regression coefficients

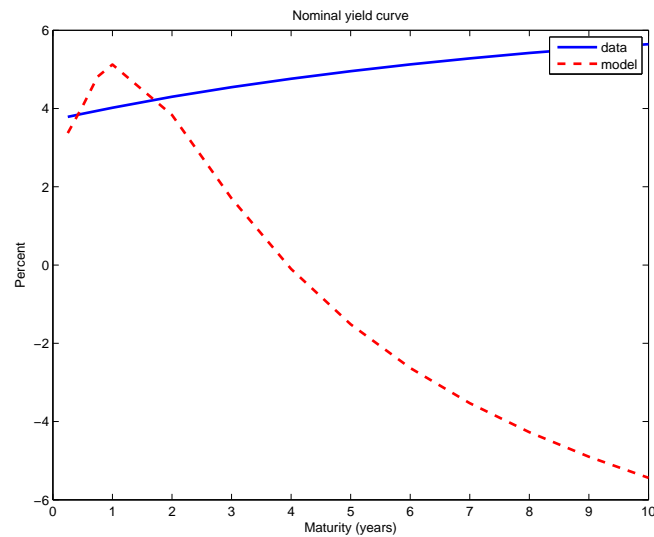


This figure plots the estimated coefficients (left panels) and adjusted R^2 s (right panels) of univariate regressions of the Treasury and equity market excess returns on the interest rate variance risk premium, the equity variance risk premium, and the forward spread, in top, middle, and bottom panels, respectively. The shaded areas in the left panels represent confidence levels of the regression coefficients at the 95% significance level. All variables are standardized to have mean zero and a standard deviation of one. Data is monthly and runs from March 1993 through February 2013. The holding horizon of the excess returns is three months, and both the estimated coefficients and adjusted R^2 s are plotted against the asset tenor τ , equal to 2, 3, 4, 5, 6, 7, 8, 9, 10, 15, and 20 years for Treasuries, and ∞ for the equity market portfolio.

Figure 3: The model-implied nominal yield curve



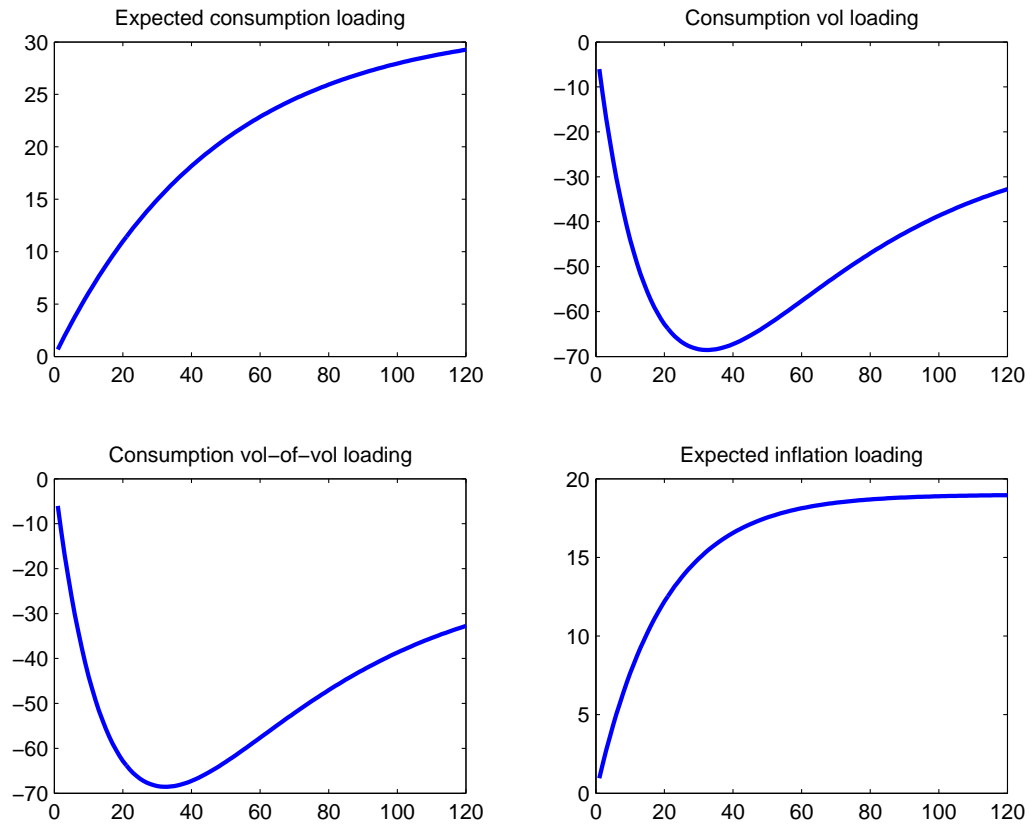
(a) With LRR component



(b) No LRR component

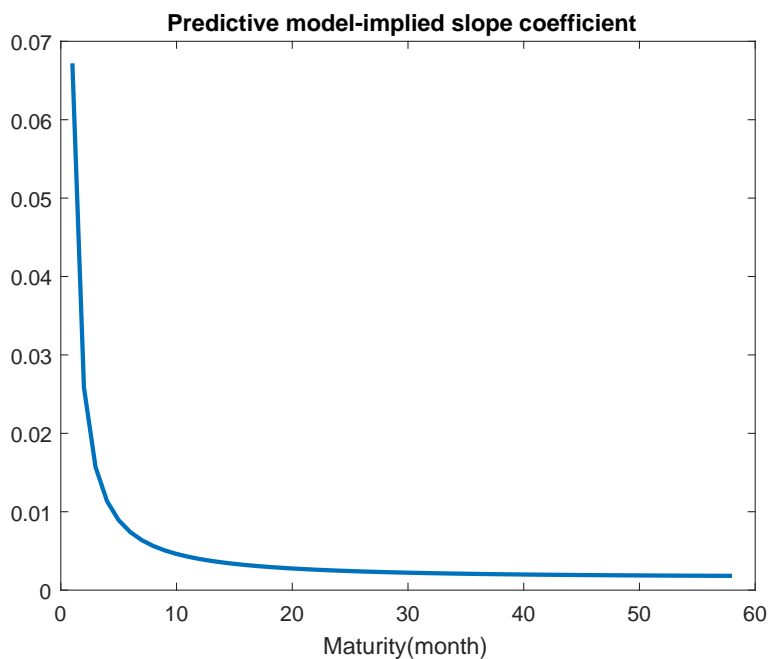
The figure plots the average zero-coupon nominal Treasury yield curve as observed in the data using the sample of January 1991 - December 2010 monthly data as the solid blue line in both Panels (a) and (b). The figure also plots the model-implied yield curve with the long-run risk component (Panel (a)) and without the long-run risk component (Panel (b)) as the dashed red line.

Figure 4: Equilibrium nominal bond yield loadings



The figure plots the model-implied nominal bond yield loadings on expected consumption growth (top left panel), consumption volatility (top right panel), consumption volatility-of-volatility (bottom left panel), and expected inflation (bottom right panel). Maturity on horizontal axes is in months.

Figure 5: Model-implied predictability



The figure plots the model-implied slope of the predictive regression of the nominal bond risk premium to the nominal bond variance risk premium: $\text{brp}_t^{\$,n} = a + b \times \text{BVRP}_t^{\$,n} \left[\sigma_{r^{\$,t+1}}^2 \right] + \epsilon$. Maturity on horizontal axes is in months.

A Appendix

A.1 Solution for the consumption-wealth ratio coefficients

Euler equation imposes equilibrium restrictions on the asset prices:

$$\mathbb{E}[\exp(m_{t+1} + r_{t+1})] = 1. \quad (\text{A.1})$$

Since this Euler equation should hold for any asset, it should also hold for the wealth-consumption ratio z_t . Thus, the return on this asset $r_{c,t+1}$ should satisfy (A.1). Using it and the wealth return equation (18), obtain:

$$\mathbb{E}_t [\exp(m_{t+1} + r_{c,t+1})] = \mathbb{E}_t \left[\exp \left(\theta \ln \delta - \frac{\theta}{\psi} g_{t+1} + \theta r_{c,t+1} \right) \right] = 1, \quad (\text{A.2})$$

or, in log-linearized dynamics:

$$\mathbb{E}_t \left[\theta \ln \delta - \frac{\theta}{\psi} g_{t+1} + \theta r_{c,t+1} \right] + \frac{1}{2} \text{Var}_t \left[\theta \ln \delta - \frac{\theta}{\psi} g_{t+1} + \theta r_{c,t+1} \right] = 0. \quad (\text{A.3})$$

Substituting out $r_{c,t+1}$ in terms of z_t dynamics (17) and consumption growth g_{t+1} , we can solve for the equilibrium wealth-consumption ratio loadings A_0 , A_x , A_{σ^2} , A_q :

$$\begin{aligned} & \mathbb{E}_t \left[\theta \ln \delta - \frac{\theta}{\psi} (\mu_g + x_t + \sigma_{g,t} z_{g,t+1}) + \theta (\kappa_0 + \kappa_1 (A_0 + A_x x_{t+1} + A_{\sigma} \sigma_{g,t+1}^2 + A_q q_{t+1}) - \right. \\ & \left. A_0 - A_x x_t - A_{\sigma} \sigma_{g,t}^2 - A_q q_t + \mu_g + x_t + \sigma_{g,t} z_{g,t+1}) \right] + \\ & \frac{1}{2} \text{Var}_t \left[\theta \ln \delta - \frac{\theta}{\psi} (\mu_g + x_t + \sigma_{g,t} z_{g,t+1}) + \theta (\kappa_0 + \kappa_1 (A_0 + A_x x_{t+1} + A_{\sigma} \sigma_{g,t+1}^2 + A_q q_{t+1}) - \right. \\ & \left. A_0 - A_x x_t - A_{\sigma} \sigma_{g,t}^2 - A_q q_t + \mu_g + x_t + \sigma_{g,t} z_{g,t+1}) \right] = 0. \end{aligned} \quad (\text{A.4})$$

To solve for A_0 , set constant terms under the expectation in (A.4) equal to zero:

$$\begin{aligned} & \theta \ln \delta + \theta (\kappa_0 + \kappa_1 (A_0 + A_{\sigma} a_{\sigma} + A_q a_q)) - A_0 + \left(\theta - \frac{\theta}{\psi} \right) \mu_g = 0 \quad \Rightarrow \\ & A_0 = \frac{1}{1 - \kappa_1} \left[\ln \delta + \kappa_0 + \kappa_1 (A_{\sigma} a_{\sigma} + A_q a_q) + \left(1 - \frac{1}{\psi} \right) \mu_g \right]. \end{aligned} \quad (\text{A.5})$$

To solve for A_x , match the terms in front of x_t :

$$-\frac{\theta}{\psi} + \theta (\kappa_1 A_x \rho_x - A_x + 1) = 0 \quad \Rightarrow \quad A_x = \frac{1 - \frac{1}{\psi}}{1 - \kappa_1 \rho_x}. \quad (\text{A.6})$$

To solve for A_σ , match the terms in front of $\sigma_{g,t}^2$:

$$\begin{aligned}
& (\theta\kappa_1 A_\sigma \rho_\sigma - \theta A_\sigma) \sigma_{g,t}^2 + \frac{1}{2} \text{Var}_t \left[-\frac{\theta}{\psi} \sigma_{g,t}^2 z_{g,t+1} + \theta\kappa_1 A_x \phi_e \sigma_{g,t} z_{x,t+1} + \theta \sigma_{g,t} z_{g,t+1} \right] = \\
& \theta A_\sigma (\kappa_1 \rho_\sigma - 1) \sigma_{g,t}^2 + \frac{1}{2} \text{Var}_t \left[\left(\theta - \frac{\theta}{\psi} \right) \sigma_{g,t} z_{g,t+1} + \theta\kappa_1 A_x \phi_e \sigma_{g,t} z_{x,t+1} \right] = 0 \quad \Rightarrow \\
& \theta A_\sigma (\kappa_1 \rho_\sigma - 1) + \frac{1}{2} \left[\left(\theta - \frac{\theta}{\psi} \right)^2 + (\theta\kappa_1 A_x \phi_e)^2 \right] = 0 \quad \Rightarrow \\
& A_\sigma = \frac{1}{2\theta(1 - \kappa_1 \rho_\sigma)} \left[\left(\theta - \frac{\theta}{\psi} \right)^2 + (\theta\kappa_1 A_x \phi_e)^2 \right].
\end{aligned} \tag{A.7}$$

To solve for A_q , match the terms in front of q_t and set equal to zero:

$$\begin{aligned}
& (\theta\kappa_1 A_q \rho_q - \theta A_q) q_t + \frac{1}{2} \text{Var}_t [\theta\kappa_1 A_\sigma \sqrt{q_t} z_{\sigma_{t+1}} + \theta\kappa_1 A_q (\rho_q q_t + \phi_q \sqrt{q_t} z_{q_{t+1}}) - \theta A_q q_t] = \\
& \theta A_q (\kappa_1 \rho_q - 1) q_t + \frac{1}{2} \text{Var}(\theta\kappa_1 A_\sigma \sqrt{q_t} z_{\sigma_{t+1}} + \theta\kappa_1 A_q \phi_q \sqrt{q_t} z_{q_{t+1}}) = 0 \quad \Rightarrow \\
& \frac{1}{2} (\theta\kappa_1 \phi_q)^2 A_q^2 + \theta(\kappa_1 \rho_q - 1) A_q + \frac{1}{2} (\theta\kappa_1 A_\sigma)^2 = 0 \quad \text{or, equivalently,} \\
& (\theta\kappa_1 \phi_q)^2 A_q^2 + 2\theta(\kappa_1 \rho_q - 1) A_q + (\theta\kappa_1 A_\sigma)^2 = 0.
\end{aligned} \tag{A.8}$$

The solution for A_q represents the solution to a quadratic equation and is given by:

$$A_q^\pm = \frac{1 - \kappa_1 \rho_q \pm \sqrt{(1 - \kappa_1 \rho_q)^2 - (\theta\kappa_1^2 \phi_q A_\sigma)^2}}{\theta(\kappa_1 \phi_q)^2}. \tag{A.9}$$

As [Tauchen \(2011\)](#) notes, a “positive” root A_q^+ has an unfortunate property $\lim_{\phi_q \rightarrow 0} \phi_q^2 A_q^+ \neq 0$, which is, essentially, a violation of the transversality condition in this setting: though uncertainty q_t vanishes with $\phi_q \rightarrow 0$, the effect of it on prices is not. Therefore, we choose A_q^- root as a viable solution for A_q :

$$A_q = \frac{1 - \kappa_1 \rho_q - \sqrt{(1 - \kappa_1 \rho_q)^2 - \theta^2 \kappa_1^4 \phi_q^2 A_\sigma^2}}{\theta(\kappa_1 \phi_q)^2}. \tag{A.10}$$

To insure that the determinant in [\(A.10\)](#) is positive, we also impose a constraint on ϕ_q —the magnitude of the shock $z_{q,t+1}$:

$$\phi_q^2 \leq \frac{(1 - \kappa_1 \rho_q)^2}{\theta^2 \kappa_1^4 A_\sigma^2}. \tag{A.11}$$

A.2 Solution for the real pricing kernel and the real risk-free rate

Using the solutions for A 's obtained in A.1, we solve for the expected value $E_t[m_{t+1}]$ and the variance $\text{Var}_t[m_{t+1}]$ of the real pricing kernel m_{t+1} :

$$\begin{aligned}
E_t[m_{t+1}] &= \theta \ln \delta - \frac{\theta}{\psi} E_t[g_{t+1}] + (\theta - 1) E_t[r_{c,t+1}] = \\
&= \theta \ln \delta - \frac{\theta}{\psi} (\mu_g + x_t) + (\theta - 1) E_t(\kappa_0 + \kappa_1 z_{t+1} + g_t - z_t) \\
&= \theta \ln \delta - \frac{\theta}{\psi} (\mu_g + x_t) + (\theta - 1) [\kappa_0 + \kappa_1 (A_0 + A_x \rho_x x_t + A_\sigma (a_\sigma + \rho_\sigma \sigma_{g,t}^2) + A_q (a_q + \rho_q q_t)) \\
&\quad + \mu_g + x_t - A_0 - A_x x_t - A_\sigma \sigma_{g,t}^2 - A_q q_t] \\
&= \theta \ln \delta + \underbrace{\left((\theta - 1) - \frac{\theta}{\psi} \right)}_{-\gamma} \mu_g + (\theta - 1) [\kappa_0 + (\kappa_1 - 1) A_0 + \kappa_1 (A_\sigma a_\sigma + A_q a_q)] \\
&\quad - \frac{\theta}{\psi} x_t + (\theta - 1) [(A_x (\kappa_1 \rho_x - 1) + 1) x_t + A_\sigma (\kappa_1 \rho_\sigma - 1) \sigma_{g,t}^2 + A_q (\kappa_1 \rho_q - 1) q_t] \\
&= \theta \ln \delta - \gamma (\mu_g + x_t) + (\theta - 1) [\kappa_0 + (\kappa_1 - 1) A_0 + \kappa_1 (A_\sigma a_\sigma + A_q a_q)] \\
&\quad + (\theta - 1) [A_x (\kappa_1 \rho_x - 1) x_t + A_\sigma (\kappa_1 \rho_\sigma - 1) \sigma_{g,t}^2 + A_q (\kappa_1 \rho_q - 1) q_t].
\end{aligned} \tag{A.12}$$

and

$$\begin{aligned}
\text{Var}_t[m_{t+1}] &= \text{Var}_t \left[\theta \ln \delta - \frac{\theta}{\psi} g_{t+1} + (\theta - 1) r_{c,t+1} \right] \\
&= \text{Var}_t \left[-\frac{\theta}{\psi} g_{t+1} + (\theta - 1) [\kappa_1 (A_0 + A_x x_{t+1} + A_\sigma \sigma_{g,t+1}^2 + A_q q_{t+1}) + g_{t+1}] \right] \\
&= \text{Var}_t \left[\left((\theta - 1) - \frac{\theta}{\psi} \right) \sigma_{g,t} z_{g,t+1} + (\theta - 1) \kappa_1 (A_x \phi_e \sigma_{g,t} z_{x,t+1} + A_\sigma \sqrt{q_t} z_{\sigma,t+1} + A_q \phi_q \sqrt{q_t} z_{q,t+1}) \right] \\
&= \gamma^2 \sigma_{g,t}^2 + (\theta - 1)^2 \kappa_1^2 [A_x^2 \phi_e^2 \sigma_{g,t}^2 + (A_\sigma^2 + A_q^2 \phi_q^2) q_t].
\end{aligned} \tag{A.13}$$

The real risk-free rate is the negative of the (log) real pricing kernel with the Jensen's correction. Using the solutions (A.12) and (A.13) for the real pricing kernel, the model-implied real risk-free rate is given by:

$$\begin{aligned}
r_{f,t} &= -p_t^1 = -E_t[m_{t+1}] - \frac{1}{2} \text{Var}_t[m_{t+1}] \\
&= -\theta \ln \delta + \gamma \mu_g - (\theta - 1) [\kappa_0 + (\kappa_1 - 1) A_0 + \kappa_1 (A_\sigma a_\sigma + A_q a_q)] \\
&\quad + [\gamma - (\theta - 1) A_x (\kappa_1 \rho_x - 1)] x_t \\
&\quad + \left[-(\theta - 1) A_\sigma (\kappa_1 \rho_\sigma - 1) - \frac{1}{2} (\theta - 1)^2 \kappa_1^2 A_x^2 \phi_e^2 - \frac{1}{2} \gamma^2 \right] \sigma_{g,t}^2 \\
&\quad + \left[-(\theta - 1) A_q (\kappa_1 \rho_q - 1) - \frac{1}{2} (\theta - 1)^2 \kappa_1^2 (A_\sigma^2 + A_q^2 \phi_q^2) \right] q_t.
\end{aligned} \tag{A.14}$$

Note that the time variation of the risk-free rate (A.14) crucially depends on the assumption of the preference for early resolution of uncertainty ($\theta < 0$). Without it ($\theta = 1$) the time variation in the risk-free rate depends only on the variation of the predictable consumption growth component x_t (long-run risk) and equals to: $r_{f,t} = -\ln \delta + \gamma(\mu_g + x_t) - \frac{1}{2}\gamma^2\sigma_{g,t}^2$. Moreover, in the absence of the long-run risk, it is nearly constant (ignoring the time-varying Jensen's inequality correction): $r_{f,t} = -\ln \delta + \gamma\mu_g - \frac{1}{2}\gamma^2\sigma_{g,t}^2$. In the steady state the real risk-free rate can be written as:

$$r_f = -[c_0 \ c_1 \ c_2 \ c_3] \times [1 \ E_x \ E_{\sigma^2} \ E_q]'. \quad (\text{A.15})$$

where steady-state loadings c_i , $i = 0, \dots, 3$ are given by:

$$\begin{aligned} c_0 &= \theta \ln \delta - \gamma\mu_g + (\theta - 1)[\kappa_0 + (\kappa_1 - 1)A_0 + \kappa_1(A_\sigma a_\sigma + A_q a_q)], \\ c_1 &= -\gamma + (\theta - 1)A_x(\kappa_1 \rho_x - 1), \\ c_2 &= \frac{1}{2}\gamma^2 + \frac{1}{2}(\theta - 1)^2 \kappa_1^2 A_x^2 \phi_e^2 + (\theta - 1)A_\sigma(\kappa_1 \rho_\sigma - 1), \\ c_3 &= \frac{1}{2}(\theta - 1)^2 \kappa_1^2 (A_\sigma^2 + A_q^2 \phi_q^2) + (\theta - 1)A_q(\kappa_1 \rho_q - 1). \end{aligned} \quad (\text{A.16})$$

A.3 Solution for the nominal one-period risk-free rate

Similarly to the real risk-free rate (A.14), the nominal one-period risk-free rate is the negative of the (log) nominal pricing kernel with the Jensen's correction:

$$\begin{aligned} r_{f,t}^\$ &= -E_t [m_{t+1}^\$] - \frac{1}{2}\text{Var}_t [m_{t+1}^\$] \\ &= -E_t [m_{t+1} - \pi_{t+1}] - \frac{1}{2}\text{Var}_t [m_{t+1}] - \frac{1}{2}\text{Var}_t [\pi_{t+1}] + \text{Cov}_t [m_{t+1}, \pi_{t+1}] \\ &= r_{f,t} + E_t [\pi_{t+1}] - \frac{1}{2}\text{Var}_t [\pi_{t+1}] + \text{Cov}_t [m_{t+1}, \pi_{t+1}] \\ &= r_{f,t} + a_\pi + \rho_\pi \pi_t - \frac{1}{2}[\phi_\pi^2 + \phi_{\pi g}^2 \sigma_{g,t}^2 + \phi_{\pi \sigma}^2 q_t] + \text{Cov}_t [m_{t+1}, \pi_{t+1}]. \end{aligned} \quad (\text{A.17})$$

We need to compute the last term in (A.17) to complete the expression for the nominal risk-free rate in closed form:

$$\text{Cov}_t [m_{t+1}, \pi_{t+1}] = E_t [(m_{t+1} - E_t m_{t+1}) \times (\pi_{t+1} - E_t \pi_{t+1})]. \quad (\text{A.18})$$

The unexpected components of the pricing kernel m_{t+1} and inflation π_{t+1} are given by:

$$\begin{aligned} m_{t+1} - E_t [m_{t+1}] &= -\gamma\sigma_{g,t}z_{g,t+1} + (\theta - 1)\kappa_1(A_x\phi_e z_{x,t+1} + A_\sigma\sqrt{q_t}z_{\sigma,t+1} + A_q\phi_q\sqrt{q_t}z_{q,t+1}), \\ \pi_{t+1} - E_t [\pi_{t+1}] &= \phi_\pi z_{\pi,t+1} + \phi_{\pi g}\sigma_{g,t}z_{g,t+1} + \phi_{\pi \sigma}\sqrt{q_t}z_{\sigma,t+1}, \end{aligned} \quad (\text{A.19})$$

which implies for (A.18):

$$E_t [(m_{t+1} - E_t m_{t+1}) \times (\pi_{t+1} - E_t \pi_{t+1})] = -\gamma\phi_{\pi g}\sigma_{g,t}^2 + (\theta - 1)\kappa_1 A_\sigma \phi_{\pi \sigma} q_t. \quad (\text{A.20})$$

Combining together (A.14), (A.17), and (A.20), we obtain the closed-form expression for the

nominal risk-free rate in terms of the model parameters and state variables:

$$\begin{aligned}
r_{f,t}^{\$} &= -\theta \ln \delta + \gamma \mu_g + a_\pi - (\theta - 1)[\kappa_0 + (\kappa_1 - 1)A_0 + \kappa_1(A_\sigma a_\sigma + A_q a_q)] - \frac{1}{2}\phi_\pi^2 \\
&+ [\gamma - (\theta - 1)A_x(\kappa_1 \rho_x - 1)] x_t \\
&+ \left[-(\theta - 1)A_\sigma(\kappa_1 \rho_\sigma - 1) - \frac{1}{2}\gamma^2 - \frac{1}{2}(\theta - 1)^2(\kappa_1 A_x \phi_e)^2 - \frac{1}{2}\phi_{\pi g}^2 - \gamma \phi_{\pi g} \right] \sigma_{g,t}^2 \\
&+ \left[-(\theta - 1)A_q(\kappa_1 \rho_q - 1) - \frac{1}{2}(\theta - 1)^2 \kappa_1^2 (A_\sigma^2 + A_q^2 \phi_q^2) - \frac{1}{2}\phi_{\pi \sigma}^2 + (\theta - 1)\kappa_1 A_\sigma \phi_{\pi \sigma} \right] q_t \\
&+ \rho_\pi \pi_t.
\end{aligned} \tag{A.21}$$

The nominal steady-state risk-free rate can be expressed similarly to that of the real risk-free rate:

$$r_f^{\$} = -[c_0^{\$} \ c_1^{\$} \ c_2^{\$} \ c_3^{\$} \ c_4^{\$}] \times [1 \ E_x \ E_{\sigma^2} \ E_q \ E_\pi]', \tag{A.22}$$

where the nominal risk-free rate loadings $c_i^{\$}$, $i = 0, \dots, 4$ are related to the real risk-free rate loadings c_i , $i = 0, \dots, 3$ as:

$$\begin{aligned}
c_0^{\$} &= c_0 - a_\pi + \frac{1}{2}\phi_\pi^2, \\
c_1^{\$} &= c_1, \\
c_2^{\$} &= c_2 + \frac{1}{2}\phi_{\pi g}^2 + \gamma \phi_{\pi g}, \\
c_3^{\$} &= c_3 + \frac{1}{2}\phi_{\pi \sigma}^2 - (\theta - 1)\kappa_1 A_\sigma \phi_{\pi \sigma}, \\
c_4^{\$} &= -\rho_\pi.
\end{aligned} \tag{A.23}$$

A.4 Solution for the nominal n -period bond price

The nominal n -period bond (log) price $p_t^{\$,n}$ is given by:

$$p_t^{\$,n} = E_t [m_{t+1}^{\$}] + \frac{1}{2} \text{Var}_t [m_{t+1}^{\$}] + E_t [p_{t+1}^{\$,n-1}] + \frac{1}{2} \text{Var}_t [p_{t+1}^{\$,n-1}] + \text{Cov}_t [m_{t+1}^{\$}, p_{t+1}^{\$,n-1}]. \tag{A.24}$$

The first and the second terms in (A.24) are known from the nominal risk-free rate calculations (A.17). The last three terms can be computed using an affine pricing conjecture:

$$p_t^{\$,n} = B_0^{\$,n} + B_1^{\$,n} x_t + B_2^{\$,n} \sigma_t^2 + B_3^{\$,n} q_t + B_4^{\$,n} \pi_t. \tag{A.25}$$

Then the expected nominal bond price is:

$$\begin{aligned}
\mathbb{E}_t \left[p_{t+1}^{\$,n-1} \right] &= B_0^{\$,n-1} + B_1^{\$,n-1} \rho_x x_t + B_2^{\$,n-1} (a_\sigma + \rho_\sigma \sigma_{g,t}^2) \\
&\quad + B_3^{\$,n-1} (a_q + \rho_q q_t) + B_4^{\$,n-1} (a_\pi + \rho_\pi \pi_t) \\
&= \left[B_0^{\$,n-1} + B_2^{\$,n-1} a_\sigma + B_3^{\$,n-1} a_q + B_4^{\$,n-1} a_\pi \right] \\
&\quad + B_1^{\$,n-1} \rho_x x_t + B_2^{\$,n-1} \rho_\sigma \sigma_{g,t}^2 + B_3^{\$,n-1} \rho_q q_t + B_4^{\$,n-1} \rho_\pi \pi_t.
\end{aligned} \tag{A.26}$$

The shock to the nominal bond price is given by:

$$\begin{aligned}
p_{t+1}^{\$,n-1} - \mathbb{E}_t \left[p_{t+1}^{\$,n-1} \right] &= B_1^{\$,n-1} \phi_e \sigma_{g,t} z_{x,t+1} + B_2^{\$,n-1} \sqrt{q_t} z_{\sigma,t+1} + B_3^{\$,n-1} \phi_q \sqrt{q_t} z_{q,t+1} \\
&\quad + B_4^{\$,n-1} [\phi_\pi z_{\pi,t+1} + \phi_{\pi g} \sigma_{g,t} z_{g,t+1} + \phi_{\pi \sigma} \sqrt{q_t} z_{\sigma,t+1}].
\end{aligned} \tag{A.27}$$

Thus, the variance of the nominal bond price is given by:

$$\begin{aligned}
\text{Var}_t [p_{t+1}^{\$,n-1}] &= \mathbb{E}_t \left[p_{t+1}^{\$,n-1} - \mathbb{E}_t \left[p_{t+1}^{\$,n-1} \right] \right]^2 = \left[(B_1^{\$,n-1} \phi_e)^2 + (B_4^{\$,n-1} \phi_{\pi g})^2 \right] \sigma_{g,t}^2 \\
&\quad + \left[\left(B_2^{\$,n-1} + B_4^{\$,n-1} \phi_{\pi \sigma} \right)^2 + \left(B_3^{\$,n-1} \phi_q \right)^2 \right] q_t + \left(B_4^{\$,n-1} \phi_\pi \right)^2.
\end{aligned} \tag{A.28}$$

Lastly, covariance between between the nominal pricing kernel and the nominal bond price equals to:

$$\text{Cov}_t \left[m_{t+1}^{\$,n-1}, p_{t+1}^{\$,n-1} \right] = \mathbb{E}_t \left[\left(m_{t+1}^{\$} - \mathbb{E}_t m_{t+1}^{\$} \right) \times \left(p_{t+1}^{\$,n-1} - \mathbb{E}_t p_{t+1}^{\$,n-1} \right) \right], \tag{A.29}$$

where the shock to the nominal pricing kernel in terms of state variables is:

$$\begin{aligned}
m_{t+1}^{\$} - \mathbb{E}_t m_{t+1}^{\$} &= m_{t+1} - \mathbb{E}_t m_{t+1} - (\pi_{t+1} - \mathbb{E}_t \pi_{t+1}) \\
&= -\gamma \sigma_{g,t} z_{g,t+1} + (\theta - 1) \kappa_1 (A_x \phi_e \sigma_{g,t} z_{x,t+1} + A_\sigma \sqrt{q_t} z_{\sigma,t+1} + A_q \phi_q \sqrt{q_t} z_{q,t+1}) \\
&\quad - \phi_\pi z_{\pi,t+1} - \phi_{\pi g} \sigma_{g,t} z_{g,t+1} - \phi_{\pi \sigma} \sqrt{q_t} z_{\sigma,t+1},
\end{aligned} \tag{A.30}$$

and the shock to the nominal bond price, $p_{t+1}^{\$,n-1} - \mathbb{E}_t p_{t+1}^{\$,n-1}$, is given in (A.27). Thus, a final expression for a covariance term in (A.24) is:

$$\begin{aligned}
\text{Cov}_t \left[m_{t+1}^{\$,n-1}, p_{t+1}^{\$,n-1} \right] &= \left[(\theta - 1) \kappa_1 A_x B_1^{\$,n-1} \phi_e^2 - (\gamma + \phi_{\pi g}) B_4^{\$,n-1} \phi_{\pi g} \right] \sigma_{g,t} \\
&\quad + \left[((\theta - 1) \kappa_1 A_\sigma - \phi_{\pi \sigma}) (B_2^{\$,n-1} + B_4^{\$,n-1} \phi_{\pi \sigma}) + (\theta - 1) \kappa_1 A_q B_3^{\$,n-1} \phi_q^2 \right] q_t \\
&\quad - B_4^{\$,n-1} \phi_\pi^2.
\end{aligned} \tag{A.31}$$

Combining together (A.17), (A.26), (A.28), and (A.31), the nominal n -period bond price is:

$$\begin{aligned}
B_0^{\$,n} &= c_0 - a_\pi + \left[B_0^{\$,n-1} + B_2^{\$,n-1} a_\sigma + B_3^{\$,n-1} a_q + B_4^{\$,n-1} a_\pi \right] + \frac{1}{2} \phi_\pi^2 \left(B_4^{\$,n-1} - 1 \right)^2 \\
B_1^{\$,n} &= c_1 + B_1^{\$,n-1} \rho_x \\
B_2^{\$,n} &= B_2^{\$,n-1} \rho_\sigma + (\theta - 1) A_\sigma (\kappa_1 \rho_\sigma - 1) + \frac{1}{2} (\gamma + \phi_{\pi g})^2 + \frac{1}{2} \phi_e^2 \left[(\theta - 1) \kappa_1 A_x + B_1^{\$,n-1} \right]^2 \\
&\quad + \frac{1}{2} (B_4^{\$,n-1} \phi_{\pi g})^2 - (\gamma + \phi_{\pi g}) B_4^{\$,n-1} \phi_{\pi g} \\
B_3^{\$,n} &= B_3^{\$,n-1} \rho_q + (\theta - 1) A_q (\kappa_1 \rho_q - 1) + \frac{1}{2} \left[(\theta - 1) \kappa_1 A_\sigma + B_2^{\$,n-1} + \phi_{\pi\sigma} \left(B_4^{\$,n-1} - 1 \right) \right]^2 \\
&\quad + \frac{1}{2} \left[(\theta - 1) \kappa_1 A_q + B_3^{\$,n-1} \right]^2 \phi_q^2 \\
B_4^{\$,n} &= \rho_\pi \left(B_4^{\$,n-1} - 1 \right).
\end{aligned} \tag{A.32}$$

A.5 Solution for the forward spread

Let $f_t^{\$,n}$ be the one-year forward rate starting $n - 1$ periods ahead: $f_t^{\$,n} = ny_t^{\$,n} - (n - 1)y_t^{\$,n-1}$, then the forward spread $FS_t^{\$,n} = f_t^{\$,n} - y_t^{\$,1}$ is the difference between the forward rate and the one-period nominal bond yield $y_t^{\$,1}$. Using the affine pricing conjecture (A.25), show that the forward spread is the function of all four model state variables:

$$\begin{aligned}
FS_t^{\$,n} &= ny_t^{\$,n} - (n - 1)y_t^{\$,n-1} - y_t^{\$,1} = p_t^{\$,n-1} - p_t^{\$,n} - y_t^{\$,1} = \\
&\left(B_0^{\$,n-1} - B_0^{\$,n} \right) + \left(B_1^{\$,n-1} - B_1^{\$,n} \right) x_t + \left(B_2^{\$,n-1} - B_2^{\$,n} \right) \sigma_{g,t}^2 + \left(B_3^{\$,n-1} - B_3^{\$,n} \right) q_t + \\
&\left(B_4^{\$,n-1} - B_4^{\$,n} \right) \pi_t - \\
&\left(- (c_0 - a_\pi + \frac{1}{2} \phi_\pi^2) - c_1 x_t - (c_2 + \frac{1}{2} \phi_{\pi g}^2 + \gamma \phi_{\pi g}) \sigma_{g,t}^2 - (c_3 + \frac{1}{2} \phi_{\pi\sigma}^2 - (\theta - 1) \kappa_1 A_\sigma \phi_{\pi\sigma}) q_t - \rho_\pi \pi_t \right) \\
&= F_0^{\$,n} + F_1^{\$,n} x_t + F_2^{\$,n} \sigma_{g,t}^2 + F_3^{\$,n} q_t + F_4^{\$,n} \pi_t.
\end{aligned} \tag{A.33}$$

Using the nominal bond loadings in (A.32), obtain the constant term and the factors for the state variables in the forward spread equation (A.33). The constant term $F_0^{\$,n}$ in (A.33) is:

$$\begin{aligned}
F_0^{\$,n} &= \left(B_0^{\$,n-1} - B_0^{\$,n} \right) + (c_0 - a_\pi + \frac{1}{2} \phi_\pi^2) = \\
&- \left[B_2^{\$,n-1} a_\sigma + B_3^{\$,n-1} a_q + B_4^{\$,n-1} a_\pi \right] + \frac{1}{2} \phi_\pi^2 \left(1 - \left(B_4^{\$,n-1} - 1 \right)^2 \right).
\end{aligned} \tag{A.34}$$

The $F_1^{\$,n}$ loading on x_t is:

$$F_1^{\$,n} = \left(B_1^{\$,n-1} - B_1^{\$,n} \right) + c_1 = B_1^{\$,n-1}(1 - \rho_x). \quad (\text{A.35})$$

The $F_2^{\$,n}$ loading on $\sigma_{g,t}^2$ is:

$$\begin{aligned} & \left(B_2^{\$,n-1} - B_2^{\$,n} \right) + \left(c_2 + \frac{1}{2}\phi_{\pi g}^2 + \gamma\phi_{\pi g} \right) = B_2^{\$,n-1}(1 - \rho_\sigma) - (\theta - 1)\kappa_1 A_x \phi_e^2 B_1^{\$,n-1} - \\ & \frac{1}{2}\phi_e^2 \left(B_1^{\$,n-1} \right)^2 - \frac{1}{2} \left(B_4^{\$,n-1} \phi_{\pi g} \right)^2 + (\gamma + \phi_{\pi g}) B_4^{\$,n-1} \phi_{\pi g}. \end{aligned} \quad (\text{A.36})$$

The $F_3^{\$,n}$ loading on q_t is:

$$\begin{aligned} & \left(B_3^{\$,n-1} - B_3^{\$,n} \right) + \left(c_3 + \frac{1}{2}\phi_{\pi\sigma}^2 - (\theta - 1)\kappa_1 A_\sigma \phi_{\pi\sigma} \right) = B_3^{\$,n-1}(1 - \rho_q) - (\theta - 1)A_q(\kappa_1 \rho_q - 1) \\ & - \frac{1}{2} \left[(\theta - 1)\kappa_1 A_\sigma + B_2^{\$,n-1} + \phi_{\pi\sigma} \left(B_4^{\$,n-1} - 1 \right) \right]^2 - \frac{1}{2} \left[(\theta - 1)\kappa_1 A_q + B_3^{\$,n-1} \right]^2 \phi_q^2 \\ & + \left(c_3 + \frac{1}{2}\phi_{\pi\sigma}^2 - (\theta - 1)\kappa_1 A_\sigma \phi_{\pi\sigma} \right). \end{aligned} \quad (\text{A.37})$$

and the $F_4^{\$,n}$ loading on π_t term is:

$$\left(B_4^{\$,n-1} - B_4^{\$,n} \right) - \rho_\pi = B_4^{\$,n-1}(1 - \rho_\pi). \quad (\text{A.38})$$

A.6 Solution for the nominal bond variance risk premium (BVRP)

Define $\sigma_{r^{\$,t}}^2 = \text{Var}_t \left[r_{t,t+1}^{\$,n} \right]$, where $r_{t,t+1}^{\$,n} = p_{t+1}^{\$,n-1} - p_t^{\$,n}$, so $\sigma_{r^{\$,t}}^2 = \text{Var}_t \left[p_{t+1}^{\$,n-1} \right]$. Similarly, $\sigma_{r^{\$,t+1}}^2 = \text{Var}_{t+1} \left[p_{t+2}^{\$,n-2} \right]$. We need the conditional variance at time $t+1$ because time- t conditional variance is known and therefore, variance risk premium is constant. To derive the nominal bond variance risk premium recall the affine pricing conjecture (A.25):

$$p_t^{\$,n} = B_0^{\$,n} + B_1^{\$,n} x_t + B_2^{\$,n} \sigma_t^2 + B_3^{\$,n} q_t + B_4^{\$,n} \pi_t. \quad (\text{A.39})$$

Therefore:

$$\begin{aligned} \sigma_{r^{\$,t+1}}^2 &= \text{Var}_{t+1} \left[p_{t+2}^{\$,n-2} \right] = \text{E}_{t+1} \left[p_{t+2}^{\$,n-2} - \text{E}_t \left[p_{t+2}^{\$,n-2} \right] \right]^2 = \\ & \left[\left(B_1^{\$,n-2} \phi_e \right)^2 + \left(B_4^{\$,n-2} \phi_{\pi g} \right)^2 \right] \sigma_{g,t+1}^2 + \left[\left(B_2^{\$,n-2} + B_4^{\$,n-2} \phi_{\pi\sigma} \right)^2 + \left(B_3^{\$,n-2} \phi_q \right)^2 \right] q_{t+1} \\ & + \left(B_4^{\$,n-2} \phi_\pi \right)^2, \end{aligned} \quad (\text{A.40})$$

and its expectation equals to:

$$\begin{aligned} \mathbb{E}_t \left[\sigma_{r^s, t+1}^2 \right] &= \left[\left(B_1^{s, n-2} \phi_e \right)^2 + \left(B_4^{s, n-2} \phi_{\pi g} \right)^2 \right] (a_\sigma + \rho_\sigma \sigma_{g, t}^2) \\ &+ \left[\left(B_2^{s, n-2} + B_4^{s, n-2} \phi_{\pi \sigma} \right)^2 + \left(B_3^{s, n-2} \phi_q \right)^2 \right] (a_q + \rho_q q_t) + \left(B_4^{s, n-2} \phi_\pi \right)^2. \end{aligned} \quad (\text{A.41})$$

The nominal BVRP is defined as the difference in expectations of the variance under risk-neutral \mathbb{Q} and actual measures, which is given by the covariance between the variance of the nominal bond price and the nominal stochastic discount factor:

$$\begin{aligned} \mathbb{E}_t^{\mathbb{Q}} \left[\sigma_{r^s, t+1}^2 \right] - \mathbb{E}_t \left[\sigma_{r^s, t+1}^2 \right] &= \text{Cov}_t \left[\sigma_{r^s, t+1}^2, m_{t+1}^s \right] \\ &= \mathbb{E}_t \left[\left(\sigma_{r^s, t+1}^2 - \mathbb{E}_t \sigma_{r^s, t+1}^2 \right) \times \left(m_{t+1}^s - \mathbb{E}_t m_{t+1}^s \right) \right]. \end{aligned} \quad (\text{A.42})$$

The unexpected part of the variance of the nominal bond price is given by:

$$\begin{aligned} \sigma_{r^s, t+1}^2 - \mathbb{E}_t \sigma_{r^s, t+1}^2 &= \left[\left(B_1^{s, n-2} \phi_e \right)^2 + \left(B_4^{s, n-2} \phi_{\pi g} \right)^2 \right] \sqrt{q_t} z_{\sigma, t+1} \\ &+ \left[\left(B_2^{s, n-2} + B_4^{s, n-2} \phi_{\pi \sigma} \right)^2 + \left(B_3^{s, n-2} \phi_q \right)^2 \right] \phi_q \sqrt{q_t} z_{q, t+1} \end{aligned} \quad (\text{A.43})$$

and the unexpected part of the nominal pricing kernel is given by (A.30). Taking the expectation of the product of (A.30) and (A.43), we obtain the nominal BVRP (A.42) in the closed form as a function of model parameters:

$$\begin{aligned} \text{BVRP}_t^{s, n} \left[\sigma_{r^s, t+1}^2 \right] &= \mathbb{E}_t^{\mathbb{Q}} \left[\sigma_{r^s, t+1}^2 \right] - \mathbb{E}_t \left[\sigma_{r^s, t+1}^2 \right] = \\ &(\theta - 1) \kappa_1 \left\{ (A_\sigma - \phi_{\pi \sigma}) \left[\left(B_1^{s, n-2} \phi_e \right)^2 + \left(B_4^{s, n-2} \phi_{\pi g} \right)^2 \right] + \right. \\ &\left. A_q \phi_q^2 \left[\left(B_2^{s, n-2} + B_4^{s, n-2} \phi_{\pi \sigma} \right)^2 + \left(B_3^{s, n-2} \phi_q \right)^2 \right] \right\} q_t. \end{aligned} \quad (\text{A.44})$$

Note that the nominal BVRP in (A.44) has a superscript n , meaning that it is maturity-dependent. Although the nominal BVRP in (A.44) is a function of $(n-2)$ -period bond price parameters, it is indexed by n superscript because it is assessed at time t when the nominal bond has n periods to maturity. The notational leap from $n-2$ to n happens because we assess time- t expectation of the time- $(t+1)$ conditional variance $\sigma_{r^s, t+1}^2$ of the time- $(t+2)$ nominal bond price $p_{t+2}^{s, n-2}$.

A.7 Model-implied predictive regression coefficients

In this subsection we provide model-implied coefficients of the predictive regression of the nominal bond risk premium (??) on the nominal BVRP (A.44):

$$\text{brp}_t^{s, n} = a + b \times \text{BVRP}_t^{s, n} \left[\sigma_{r^s, t+1}^2 \right] + \epsilon. \quad (\text{A.45})$$

Ignoring the error term, the slope coefficient is given by:

$$b = \frac{\text{Cov} \left[\text{brp}_t^{\$,n}, \text{BVRP}_t^{\$,n} \left[\sigma_{r^{\$,t+1}}^2 \right] \right]}{\text{Var} \left[\text{BVRP}_t^{\$,n} \left[\sigma_{r^{\$,t+1}}^2 \right] \right]}, \quad (\text{A.46})$$

and the R^2 coefficient is given by:

$$R^2 = \frac{b^2 \times \text{Var} \left[\text{BVRP}_t^{\$,n} \left[\sigma_{r^{\$,t+1}}^2 \right] \right]}{\text{Var} \left[\text{brp}_t^{\$,n} \right]}. \quad (\text{A.47})$$

Using that $\text{brp}_t^{\$,n} = \beta_1^{\$,n-1} \sigma_{g,t}^2 + \beta_2^{\$,n-1} q_t + B_4^{\$,n-1} \phi_\pi^2$ from (??) and that $\text{BVRP}_t = (\theta - 1) \kappa_1 \nu q_t$, where $\nu = \{ \dots \}$ in (A.44), and ignoring the constant inflation adjustment term $B_4^{\$,n-1} \phi_\pi^2$ in the nominal bond risk premium expression obtain

$$\text{Cov} \left[\text{brp}_t^{\$,n}, \text{BVRP}_t^{\$,n} \left[\sigma_{r^{\$,t+1}}^2 \right] \right] = \text{Cov} \left[\beta_1^{\$,n-1} \sigma_{g,t}^2 + \beta_2^{\$,n-1} q_t, (\theta - 1) \kappa_1 \nu q_t \right] = (\theta - 1) \kappa_1 \nu \beta_2^{\$,n-1} \text{Var}(q_t), \quad (\text{A.48})$$

because $\text{Cov} \left[\sigma_{g,t}^2, q_t \right] = 0$ according to the dynamics of the model state variables. Accordingly, model-implied variance of the bond variance risk-premium is:

$$\text{Var} \left[\text{BVRP}_t^{\$,n} \left[\sigma_{r^{\$,t+1}}^2 \right] \right] = (\theta - 1)^2 \kappa_1^2 \nu^2 \text{Var}(q_t). \quad (\text{A.49})$$

Then the model-implied slope coefficient b is:

$$b = \frac{(\theta - 1) \kappa_1 \nu \beta_2^{\$,n-1}}{(\theta - 1)^2 \kappa_1^2 \nu^2 \text{Var}(q_t)} = \frac{\beta_2^{\$,n-1}}{(\theta - 1) \kappa_1 \nu}, \quad (\text{A.50})$$

and the slope coefficient R^2 is:

$$R^2 = \frac{\left(\frac{\beta_2^{\$,n-1}}{(\theta - 1) \kappa_1 \nu} \right)^2 \times (\theta - 1)^2 \kappa_1^2 \nu^2 \text{Var}(q_t)}{\left(\beta_1^{\$,n-1} \right)^2 \text{Var}(\sigma_{g,t}^2) + \left(\beta_2^{\$,n-1} \right)^2 \text{Var}(q_t)} = \frac{\left(\beta_2^{\$,n-1} \right)^2 \text{Var}(q_t)}{\left(\beta_1^{\$,n-1} \right)^2 \text{Var}(\sigma_{g,t}^2) + \left(\beta_2^{\$,n-1} \right)^2 \text{Var}(q_t)}. \quad (\text{A.51})$$

B Appendix

Table B1: Multivariate Predictive Regressions: IRVRP, EVRP, and FS

	2y	3y	4y	5y	6y	7y	8y	9y	10y	15y	20y	Equity
1-month holding period												
IRVRP	0.830** (14.647)	0.705** (11.472)	0.598** (8.177)	0.512** (6.103)	0.443** (4.869)	0.389** (4.134)	0.345** (3.741)	0.311** (3.605)	0.284** (3.523)	0.212* (2.433)	0.166 ⁺ (1.904)	0.090 (0.976)
EVPR	-0.015 (-0.557)	-0.021 (-0.687)	-0.028 (-0.815)	-0.040 (-1.027)	-0.055 (-1.295)	-0.073 (-1.579)	-0.091 ⁺ (-1.813)	-0.109* (-1.980)	-0.126 ⁺ (-1.842)	-0.187** (-3.347)	-0.218** (-3.775)	0.264** (5.911)
FS	0.291** (4.621)	0.339** (5.535)	0.369** (5.532)	0.387** (5.347)	0.396** (5.205)	0.398** (5.105)	0.394** (5.109)	0.385** (5.144)	0.373** (5.008)	0.302** (3.769)	0.259** (3.127)	-0.040 (-0.459)
R ²	0.842	0.796	0.729	0.659	0.595	0.536	0.485	0.439	0.399	0.263	0.195	0.074
3-month holding period												
IRVRP	0.749** (12.907)	0.553** (6.409)	0.409** (3.791)	0.310** (2.585)	0.241 ⁺ (1.926)	0.193 (1.489)	0.158 (1.159)	0.133 (0.937)	0.114 (0.772)	0.045 (0.301)	-0.023 (-0.157)	0.168 (1.459)
EVPR	-0.025 (-1.012)	-0.042 ⁺ (-1.870)	-0.061* (-2.357)	-0.081* (-2.556)	-0.101** (-2.779)	-0.119** (-3.080)	-0.134** (-3.275)	-0.147** (-3.401)	-0.156** (-3.499)	-0.173** (-3.779)	-0.171** (-3.839)	0.351** (8.461)
FS	0.302** (3.714)	0.334** (3.243)	0.350** (3.042)	0.359** (2.874)	0.362** (2.852)	0.359** (2.781)	0.352** (2.632)	0.343* (2.490)	0.331* (2.349)	0.287* (2.041)	0.279 ⁺ (1.923)	-0.074 (-0.564)
R ²	0.716	0.561	0.445	0.369	0.318	0.280	0.251	0.227	0.206	0.131	0.093	0.139

	2y	3y	4y	5y	6y	7y	8y	9y	10y	15y	20y	Equity
6-month holding period												
IRVRP	0.582**	0.335**	0.191	0.100	0.041	0.002	-0.022	-0.036	-0.045	-0.077	-0.127	0.253*
	(6.705)	(2.907)	(1.345)	(0.617)	(0.231)	(0.013)	(-0.112)	(-0.184)	(-0.227)	(-0.389)	(-0.654)	(1.960)
EVRP	-0.016	-0.039	-0.059	-0.078 ⁺	-0.096*	-0.112*	-0.126**	-0.138**	-0.147**	-0.157**	-0.141*	0.273**
	(-0.406)	(-0.871)	(-1.290)	(-1.712)	(-2.117)	(-2.480)	(-2.787)	(-3.025)	(-3.188)	(-3.003)	(-2.283)	(4.985)
FS	0.277*	0.311 ⁺	0.336 ⁺	0.357*	0.370*	0.373 ⁺	0.370 ⁺	0.362 ⁺	0.351 ⁺	0.310	0.307	-0.113
	(1.961)	(1.934)	(1.951)	(1.970)	(1.967)	(1.933)	(1.872)	(1.798)	(1.723)	(1.519)	(1.487)	(-0.751)
R ²	0.461	0.290	0.220	0.188	0.169	0.155	0.144	0.134	0.125	0.089	0.070	0.111
12-month holding period												
IRVRP	-0.046	-0.024	-0.032	-0.055	-0.081	-0.101	-0.112	-0.117	-0.116	-0.105	-0.154	0.234 ⁺
	(-0.376)	(-0.164)	(-0.178)	(-0.270)	(-0.356)	(-0.411)	(-0.434)	(-0.434)	(-0.420)	(-0.394)	(-0.614)	(1.668)
EVRP	0.030	0.013	0.004	-0.004	-0.012	-0.021	-0.030	-0.039	-0.048	-0.071	-0.071	0.148 ⁺
	(0.300)	(0.133)	(0.039)	(-0.051)	(-0.153)	(-0.272)	(-0.405)	(-0.541)	(-0.674)	(-1.089)	(-1.113)	(1.822)
FS	0.054	0.109	0.172	0.232	0.280	0.312	0.329	0.333	0.330	0.286	0.296	0.022
	(0.272)	(0.498)	(0.742)	(0.960)	(1.117)	(1.209)	(1.245)	(1.242)	(1.219)	(1.100)	(1.117)	(0.137)
R ²	0.005	0.011	0.025	0.041	0.055	0.063	0.068	0.068	0.066	0.052	0.049	0.087

Note: This table presents results of the multivariate regression:

$$rx_{t+h}^{(\tau)} = \beta_0^{(\tau)} + \beta_1^{(\tau)}(h) \cdot \text{IRVRP}_t + \beta_2^{(\tau)}(h) \cdot \text{EVRP}_t + \beta_3^{(\tau)}(h) \cdot \text{FS}_t^{(\tau)} + \epsilon_{t+h}^{(\tau)},$$

where $rx_{t+h}^{(\tau)}$ is the h -period excess return for a Treasury security with tenors of τ ($=2, 3, 4, 5, 6, 7, 8, 9, 10, 15$, and 20) years, and the equity market portfolio with $\tau = \infty$ tenor, IRVRP_t is the measure of interest rate variance risk premium, EVRP_t is the equity variance risk premium measure constructed by [Bollerslev, Tauchen, and Zhou \(2009\)](#) using S&P 500 index options, and $\text{FS}_t^{(\tau)}$ is the forward spread between the one-year forward rate τ -year ahead and the one-year zero coupon yield. The t-statistics presented in parentheses are calculated using [Newey and West \(1987\)](#) standard errors with the optimal lag length determined according to [Newey and West \(1994\)](#). All variables are standardized to have mean zero and a standard deviation of one. Data is monthly and runs from March 1993 through February 2013. Significance levels: ** for $p < 0.01$, * for $p < 0.05$, and $+$ for $p < 0.1$, where p is the p-value.

Table B2: Control for Macro Principal Components

	2y	3y	4y	5y	6y	7y	8y	9y	10y	15y	20y	Equity
A: 1-month holding period												
IRVRP	1.009** (10.278)	0.958** (10.919)	0.907** (13.423)	0.862** (11.641)	0.821** (11.100)	0.784** (10.461)	0.749** (9.968)	0.715** (9.688)	0.683** (9.409)	0.541** (7.875)	0.437** (6.061)	0.086 (1.157)
F1	-0.054 (-0.892)	-0.038 (-0.632)	-0.033 (-0.617)	-0.034 (-0.574)	-0.040 (-0.662)	-0.047 (-0.780)	-0.054 (-0.914)	-0.061 (-1.046)	-0.066 (-1.159)	-0.079 (-1.513)	-0.077 (-1.554)	-0.187* (-2.369)
F2	-0.126 (-1.584)	-0.105 (-1.436)	-0.086 (-1.427)	-0.071 (-1.037)	-0.058 (-0.818)	-0.047 (-0.639)	-0.038 (-0.497)	-0.030 (-0.387)	-0.023 (-0.291)	0.002 (0.019)	0.010 (0.111)	0.114 (1.482)
F3	-0.047* (-2.170)	-0.066** (-2.699)	-0.085* (-2.443)	-0.101** (-2.678)	-0.115** (-2.766)	-0.128** (-2.783)	-0.138** (-2.738)	-0.146** (-2.666)	-0.153* (-2.575)	-0.172* (-2.366)	-0.181* (-2.386)	-0.005 (-0.118)
F4	-0.094 (-1.472)	-0.078 (-1.297)	-0.065 (-1.401)	-0.056 (-1.032)	-0.052 (-0.898)	-0.049 (-0.826)	-0.047 (-0.769)	-0.045 (-0.713)	-0.042 (-0.649)	-0.014 (-0.227)	0.027 (0.516)	-0.134 (-1.238)
F5	0.041 (1.343)	0.021 (0.638)	0.001 (0.027)	-0.016 (-0.382)	-0.028 (-0.665)	-0.037 (-0.840)	-0.041 (-0.927)	-0.044 (-0.948)	-0.044 (-0.924)	-0.040 (-0.806)	-0.046 (-0.890)	0.031 (0.411)
F6	0.081** (3.314)	0.092** (2.913)	0.095** (2.813)	0.093* (2.175)	0.088+ (1.724)	0.081 (1.367)	0.074 (1.095)	0.067 (0.899)	0.062 (0.757)	0.055 (0.531)	0.076 (0.740)	-0.107* (-2.030)
F7	0.049+ (1.814)	0.041 (1.326)	0.026 (0.743)	0.009 (0.228)	-0.008 (-0.200)	-0.024 (-0.562)	-0.038 (-0.855)	-0.048 (-1.075)	-0.056 (-1.241)	-0.065 (-1.386)	-0.054 (-1.088)	0.073 (1.060)
F8	0.000 (0.009)	0.021 (0.581)	0.048 (1.207)	0.077+ (1.857)	0.106* (2.491)	0.133** (2.958)	0.157** (3.311)	0.176** (3.507)	0.192** (3.617)	0.226** (3.814)	0.222** (4.189)	0.017 (0.242)
R ²	0.779	0.713	0.643	0.582	0.530	0.488	0.452	0.421	0.393	0.289	0.223	0.081
B: 3-month holding period												
IRVRP	0.841** (8.286)	0.670** (6.362)	0.551** (5.472)	0.475** (4.742)	0.425** (4.087)	0.391** (3.922)	0.365** (3.744)	0.343** (3.498)	0.323** (3.216)	0.225** (2.595)	0.134 (1.368)	0.147 (1.178)
F1	0.030 (0.394)	0.069 (0.818)	0.077 (0.869)	0.071 (0.757)	0.059 (0.723)	0.046 (0.583)	0.031 (0.426)	0.018 (0.261)	0.006 (0.093)	-0.035 (-0.649)	-0.056 (-1.001)	-0.222 (-1.523)
F2	-0.064 (-0.753)	-0.006 (-0.063)	0.034 (0.412)	0.059 (0.666)	0.073 (0.811)	0.082 (0.934)	0.088 (1.012)	0.092 (1.053)	0.095 (1.072)	0.108 (1.408)	0.114 (1.489)	0.108 (1.109)
F3	-0.042+ (-1.752)	-0.044+ (-1.693)	-0.044 (-1.206)	-0.043 (-1.040)	-0.042 (-1.244)	-0.042 (-1.270)	-0.042 (-1.260)	-0.043 (-1.235)	-0.043 (-1.172)	-0.050 (-1.603)	-0.064+ (-1.959)	0.163+ (1.824)
F4	-0.061 (-0.688)	-0.010 (-0.103)	0.031 (0.375)	0.059 (0.713)	0.077 (0.895)	0.090 (1.036)	0.098 (1.160)	0.104 (1.271)	0.109 (1.379)	0.134+ (1.719)	0.170* (2.086)	-0.177 (-1.308)
F5	0.058 (1.433)	0.033 (0.697)	0.006 (0.115)	-0.019 (-0.351)	-0.040 (-0.763)	-0.056 (-1.078)	-0.069 (-1.319)	-0.078 (-1.484)	-0.084 (-1.588)	-0.091* (-2.218)	-0.085* (-2.082)	0.098 (1.344)
F6	0.077** (2.645)	0.082* (2.324)	0.083* (1.984)	0.084+ (1.684)	0.084+ (1.712)	0.085+ (1.647)	0.086 (1.573)	0.087 (1.494)	0.089 (1.412)	0.101* (2.071)	0.118* (2.394)	-0.079+ (-1.815)
F7	0.055* (2.423)	0.058* (2.028)	0.055 (1.475)	0.048 (1.155)	0.042 (0.971)	0.036 (0.793)	0.032 (0.676)	0.029 (0.617)	0.029 (0.606)	0.042 (0.942)	0.059 (1.578)	0.002 (0.035)
F8	-0.007 (-0.140)	0.009 (0.150)	0.023 (0.372)	0.036 (0.563)	0.048 (0.705)	0.058 (0.854)	0.066 (0.976)	0.073 (1.065)	0.077 (1.131)	0.079 (1.111)	0.064 (0.818)	0.036 (0.591)
R ²	0.635	0.469	0.362	0.298	0.258	0.231	0.211	0.195	0.182	0.134	0.112	0.132

	2y	3y	4y	5y	6y	7y	8y	9y	10y	15y	20y	Equity
C: 6-month holding period												
IRVRP	0.517**	0.276*	0.169	0.121	0.100	0.092	0.089	0.088	0.087	0.061	0.014	0.215
	(4.296)	(2.068)	(1.282)	(0.891)	(0.763)	(0.722)	(0.711)	(0.708)	(0.700)	(0.490)	(0.113)	(1.372)
F1	0.185	0.203	0.180	0.150	0.120	0.093	0.069	0.048	0.029	-0.035	-0.080	-0.194
	(1.498)	(1.633)	(1.554)	(1.400)	(1.220)	(1.030)	(0.832)	(0.625)	(0.413)	(-0.543)	(-1.172)	(-1.130)
F2	0.062	0.153	0.200+	0.222*	0.232*	0.234*	0.232*	0.227*	0.221*	0.191+	0.171+	0.081
	(0.563)	(1.451)	(1.912)	(2.044)	(2.171)	(2.245)	(2.276)	(2.258)	(2.160)	(1.794)	(1.676)	(0.777)
F3	-0.031	-0.030	-0.030	-0.032	-0.035	-0.037	-0.038	-0.040	-0.040	-0.035	-0.026	0.110
	(-1.390)	(-0.899)	(-0.809)	(-0.912)	(-0.984)	(-1.020)	(-1.008)	(-1.017)	(-0.972)	(-0.837)	(-0.663)	(1.506)
F4	-0.080	-0.009	0.044	0.081	0.107	0.127	0.142	0.155	0.165	0.207*	0.242**	-0.164
	(-0.631)	(-0.077)	(0.406)	(0.671)	(0.901)	(1.095)	(1.272)	(1.430)	(1.598)	(2.179)	(2.742)	(-0.964)
F5	0.037	0.009	-0.009	-0.021	-0.030	-0.037	-0.040	-0.042	-0.042	-0.032	-0.020	0.055
	(0.842)	(0.179)	(-0.175)	(-0.415)	(-0.590)	(-0.704)	(-0.767)	(-0.796)	(-0.820)	(-0.642)	(-0.417)	(1.143)
F6	0.055	0.052	0.052	0.054	0.057	0.059	0.061	0.063	0.064	0.062	0.060	-0.093*
	(1.455)	(1.226)	(1.163)	(1.221)	(1.285)	(1.324)	(1.320)	(1.301)	(1.232)	(1.262)	(1.562)	(-2.103)
F7	0.101**	0.116*	0.117*	0.112*	0.105*	0.099+	0.093+	0.089	0.086	0.086	0.094+	-0.054
	(2.704)	(2.540)	(2.435)	(2.190)	(2.018)	(1.855)	(1.713)	(1.615)	(1.577)	(1.627)	(1.958)	(-0.844)
F8	-0.022	-0.029	-0.029	-0.024	-0.016	-0.007	0.002	0.011	0.020	0.043	0.044	0.092*
	(-0.439)	(-0.528)	(-0.495)	(-0.400)	(-0.263)	(-0.112)	(0.039)	(0.180)	(0.303)	(0.659)	(0.688)	(2.291)
R ²	0.421	0.256	0.195	0.170	0.158	0.152	0.147	0.144	0.140	0.125	0.121	0.123
D: 12-month holding period												
IRVRP	-0.411*	-0.365+	-0.308+	-0.251	-0.198	-0.150	-0.109	-0.075	-0.048	0.014	0.006	0.308
	(-2.065)	(-1.960)	(-1.772)	(-1.536)	(-1.259)	(-0.999)	(-0.743)	(-0.530)	(-0.344)	(0.099)	(0.040)	(1.596)
F1	0.376*	0.343*	0.289*	0.234+	0.181	0.133	0.090	0.052	0.019	-0.105	-0.194*	-0.204
	(2.002)	(2.202)	(2.096)	(1.869)	(1.579)	(1.264)	(0.925)	(0.579)	(0.225)	(-1.322)	(-2.310)	(-1.026)
F2	0.305+	0.347*	0.374*	0.385**	0.385**	0.379**	0.370**	0.358**	0.346**	0.291*	0.254*	0.062
	(1.766)	(2.218)	(2.561)	(2.805)	(2.979)	(3.044)	(3.066)	(3.039)	(2.985)	(2.507)	(2.080)	(0.510)
F3	0.013	0.013	0.014	0.012	0.008	0.003	-0.001	-0.005	-0.007	-0.009	-0.001	0.025
	(0.405)	(0.418)	(0.437)	(0.371)	(0.245)	(0.102)	(-0.033)	(-0.149)	(-0.236)	(-0.275)	(-0.019)	(0.629)
F4	-0.033	0.019	0.057	0.087	0.110	0.128	0.142	0.154	0.163	0.203	0.246*	-0.094
	(-0.213)	(0.123)	(0.362)	(0.555)	(0.718)	(0.845)	(0.956)	(1.042)	(1.121)	(1.542)	(2.051)	(-0.644)
F5	0.053	0.054	0.057	0.056	0.053	0.049	0.044	0.040	0.037	0.033	0.043	-0.029
	(0.890)	(0.969)	(1.039)	(1.034)	(0.974)	(0.901)	(0.816)	(0.753)	(0.705)	(0.631)	(0.854)	(-0.659)
F6	0.030	0.038	0.041	0.044	0.047	0.049	0.050	0.051	0.052	0.057	0.062+	-0.059+
	(0.561)	(0.769)	(0.888)	(0.991)	(1.075)	(1.163)	(1.228)	(1.285)	(1.350)	(1.557)	(1.817)	(-1.953)
F7	0.065	0.083	0.089	0.088	0.085	0.081	0.076	0.072	0.069	0.063	0.068	-0.059
	(1.018)	(1.319)	(1.428)	(1.443)	(1.409)	(1.340)	(1.267)	(1.189)	(1.125)	(1.030)	(1.167)	(-1.096)
F8	0.008	0.014	0.020	0.027	0.033	0.040	0.045	0.049	0.053	0.065	0.069	0.003
	(0.124)	(0.230)	(0.341)	(0.468)	(0.600)	(0.712)	(0.815)	(0.887)	(0.949)	(1.200)	(1.382)	(0.041)
R ²	0.120	0.118	0.120	0.127	0.135	0.144	0.152	0.158	0.163	0.176	0.196	0.102

Note: This table presents results of the multivariate regression:

$$rx_{t+h}^{(\tau)} = \beta_0^{(\tau)} + \beta_1^{(\tau)}(h) \cdot \text{IRVRP}_t + \beta_2^{(\tau)}(h) \cdot F_t + \epsilon_{t+h}^{(\tau)},$$

where $rx_{t+h}^{(\tau)}$ is the h -period excess return for Treasuries with tensors of τ ($=2, 3, 4, 5, 6, 7, 8, 9, 10, 15$, and 20) years, and the equity market portfolio with $\tau = \infty$, IRVRP_t is the measure of interest rate variance risk premium, and F_t contains eight macro principal components of Ludvigson and Ng (2009). The t -statistics presented in parentheses are calculated using Newey and West (1987) standard errors with the optimal lag length of Newey and West (1994). All variables are standardized to have mean zero and a standard deviation of one. Data is monthly and runs from March 1993 through February 2013. Significance levels: ** for $p < 0.01$, * for $p < 0.05$, and + for $p < 0.1$, where p is the p -value.